

Series description Wilo-Helix EXCEL



Design

Efficiency Optimized Vertical Multistage pump with integrated drive, full stainless steel hydraulics and ECM motor with electronic speed, pressure or PID controls

Application

- Water supply and pressure boosting
- Industrial applications
- Process water
- Cooling water circulation systems
- Fire extinguishing systems
- Washing systems
- Irrigation

Type key

Example: **Helix EXCEL EXCEL 80 - 02 - 2 / A3 / E / KS**

Helix	Vertical high-pressure multistage centrifugal pump in in-line design with high efficient hydraulic
EXCEL	With high efficiency drive (motor/inverter)
80	Flow rate in gpm
02	Number of stages
2	Pump material
	1 = Pump casing in stainless steel 304 + hydraulic in stainless steel 304
	2 = Pump casing in stainless steel 316L + hydraulic in stainless steel 316L
	3 = Pump casing in cast iron GJL-250 + hydraulic in stainless steel 304
A3	ANSI flanges 300 lb
E	E = O rings EPDM V = O rings FKM
K	Cartridge mechanical seal
S	Lantern turned. Pump types with a lantern turned 90 degrees towards the direction of flow are available for use in systems (e. g. in pressure-boosting systems). The coupling guard of these versions is in-line with the suction and the discharge port of the pump.

Special features/product advantages

- Highly efficient EC motor (efficiency \geq IE4)
- High Efficiency controller with up to 70% speed reduction
- Efficiency-optimized, laser-welded 3D impeller hydraulics
- Optional interfaces for
- Control modes: Speed control, constant pressure, variable pressure, DPV and PID
- Available with a user-friendly cartridge mechanical seal which enables quick and easy maintenance
- The spacer coupling allows the mechanical seal to be replaced without removing the motor (from 7,4 hp (5.5 kW))

Technical data

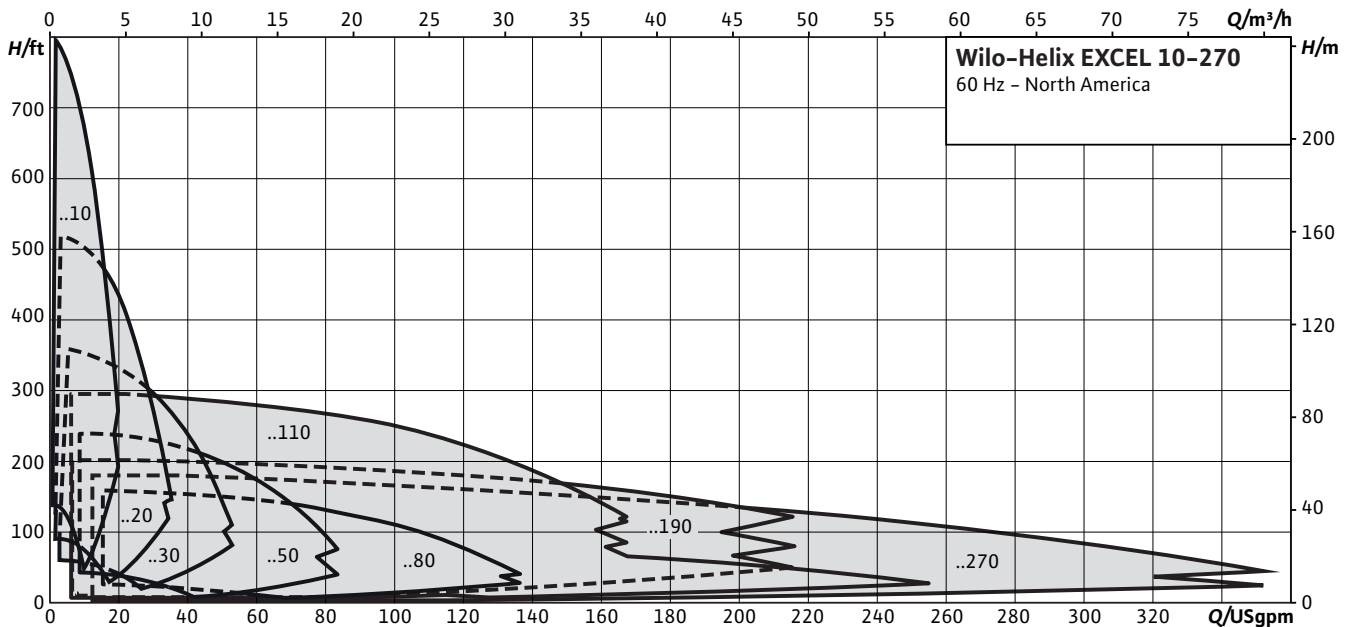
- Frequency: 60Hz
- Electrical voltage: 3~ 460V (\pm 10%) 60Hz
- UL 508 Rated Control Panel, Compliant to NFPA 70
- Fluid temperature range:
 - Helix EXCEL 10 – 80 (EPDM): -22°F to 248°F (-30°C to 120°C)
 - Helix EXCEL 10 – 80 (FKM): 5°F to 194°F (-15°C to 90°C)
 - Helix EXCEL 110 – 270 (EPDM): -4°F to 248°F (-20°C to 120°C)
 - Helix EXCEL 110 – 270 (FKM): 5°F to 194°F (-15°C to 90°C)
- Max. operating pressure: 232.1/ 362.6 psi (16/25 bar)
- Protection class: IP 55
- Ambient temperature: 5 to 104 F (-15° C to 40° C) (extended temperature ranges on request)
- Helix EXCEL 10 - 270: ANSI flanges

Pressure boosting

Single pumps

Series description Wilo-Helix EXCEL

Pump curves



Equipment/function

- Impellers, diffusers and stage housings made of corrosion-resistant material

Materials

Helix EXCEL 10, 20, 30, 50, 80:

Standard version

- Impellers, stage housings and diffusers of stainless steel AISI304L
- Pump housing of stainless steel AISI304
- Base plate and lantern of cataphoresis-coated grey cast iron EN-GJL 250
- Shaft of stainless steel AISI304 or AISI318 LN (depending on version)
- Sleeve under the mechanical seal AISI316L
- O-ring of EPDM (FKM gasket on request)
- Jacket pipe of stainless steel AISI 304

For aggressive media

- Impellers, stage housings and diffusers of stainless steel AISI316L
- Pump housing of stainless steel AISI316L
- Shaft of stainless steel AISI316L or AISI318 LN (depending on version)
- Sleeve under the mechanical seal AISI316L
- O-ring of EPDM (FKM gasket on request)
- Pump Housing Pipe stainless steel AISI316L

Helix EXCEL 110, 190, 270:

Standard version

- Stage housings, impellers, diffusers of stainless steel AISI304L
- Pump housing of cataphoresis-coated grey cast iron EN-GJL 250
- Shaft of stainless steel AISI431
- Sleeve under the mechanical seal AISI316L
- O-ring of EPDM (FKM gasket on request)
- Pump housing pipe of stainless steel AISI304

For aggressive media

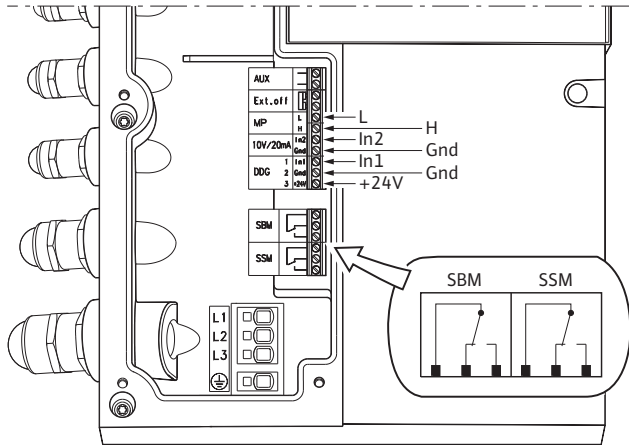
- Stage housings, impellers, diffusers of stainless steel AISI316L
- Pump housing: all parts which come in contact with the media are made of cast stainless steel AISI316L; rotating flanges of cataphoretic coated grey cast iron EN-GJL 250
- Base plate of stainless steel AISI304
- Shaft of stainless steel AISI316L or AISI318 LN (depending on version)
- Sleeve under the mechanical seal AISI316L
- O-ring of FKM (EPDM gasket on request)
- Pump housing pipe of stainless steel AISI316L

Scope of delivery

- Helix EXCEL high-pressure multistage centrifugal pump
- Installation and operating instructions

Series description Wilo-Helix EXCEL

Terminal diagram

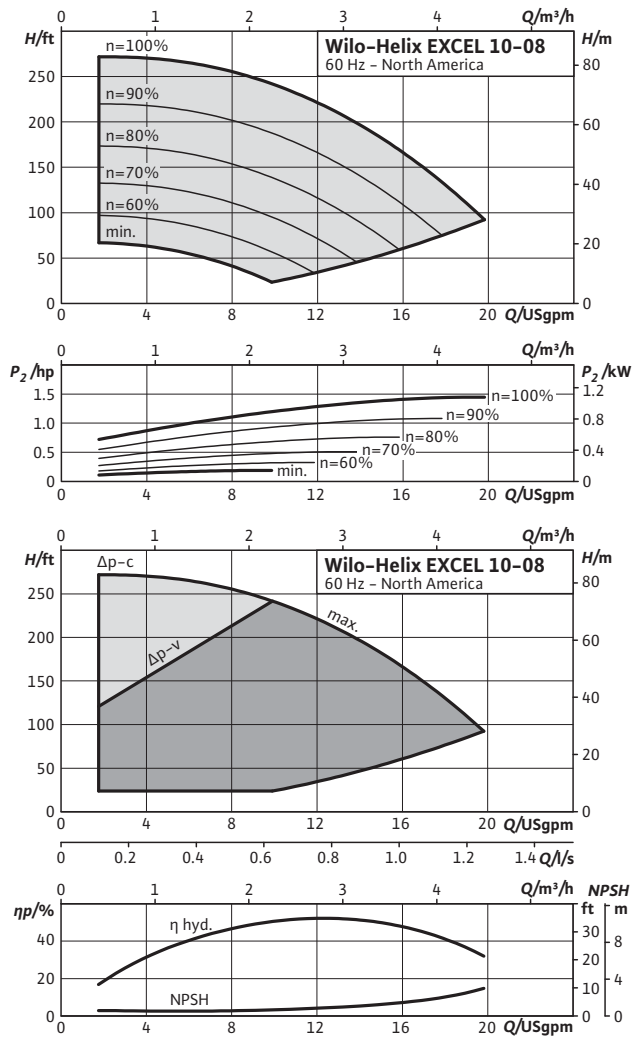


Pressure boosting

Single pumps

Pump curves, motor data Wilo-Helix EXCEL 10..

Wilo-Helix EXCEL 10-08

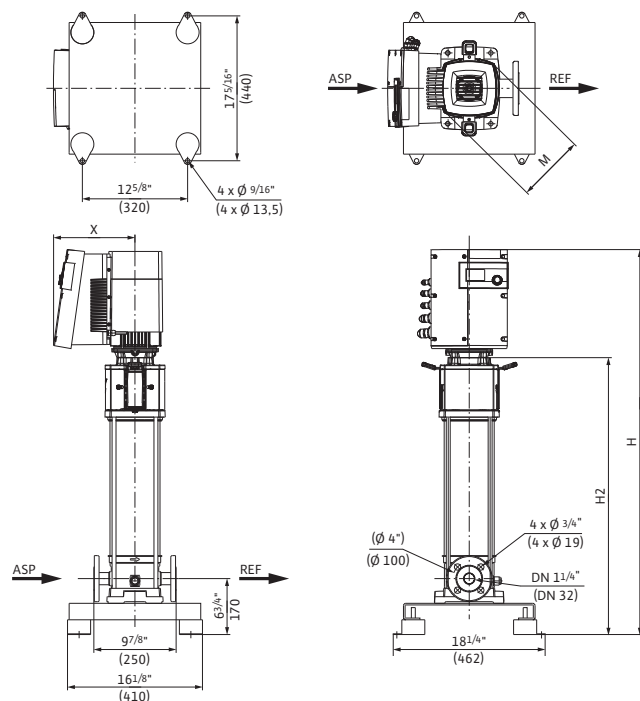


Motor data

10-08	Nominal motor power		Nominal current 3-460 V, 60 Hz	Motor efficiency
	P ₂		I	η _{m 100%}
	kW	hp	A	%
Helix EXCEL 10-08	1.10	1.5	1.76	92.0

Dimensions, weights Wilo-Helix EXCEL 10..

Dimension drawing



Dimensions, weights

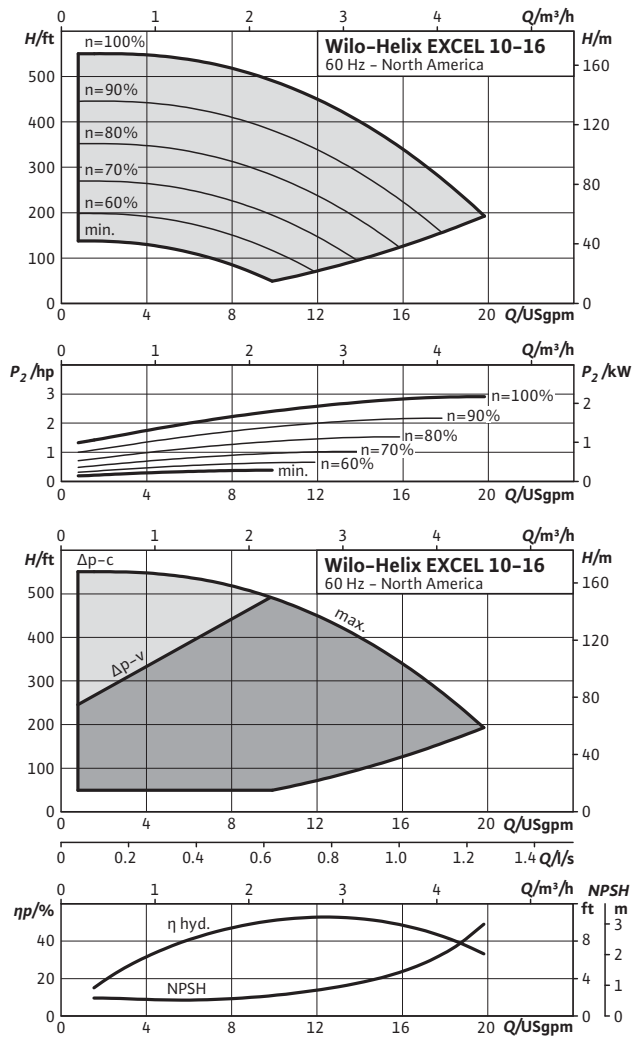
10-08	Maximum operating pressure		Dimensions								Weight approx.	
			p_{max}		H		$H2$		$\varnothing M$			
	psi	bar	in	mm	in	mm	in	mm	in	mm	kg	lbs
Helix EXCEL 10-08	362.6	25	38	965	25 ^{1/16}	637	8 ^{1/8}	206	9 ^{3/4}	248	52	115

Pressure boosting

Single pumps

Pump curves, motor data Wilo-Helix EXCEL 10..

Wilo-Helix EXCEL 10-16

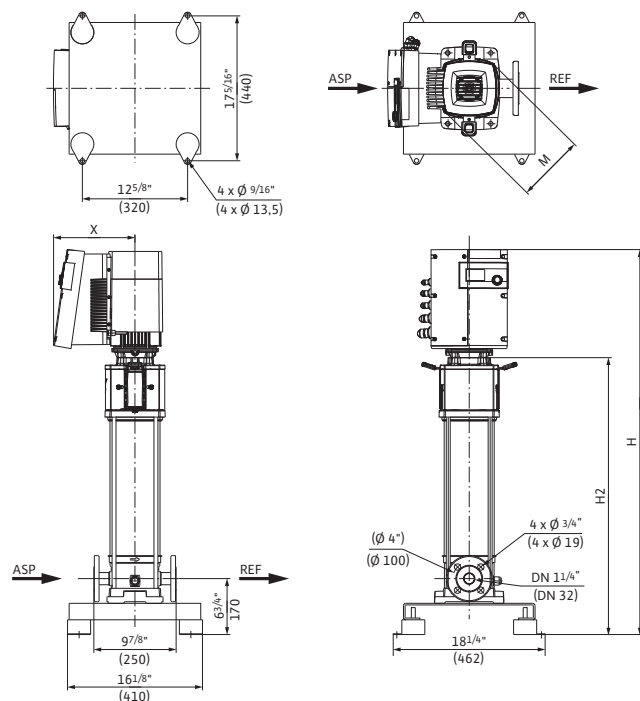


Motor data

10-16	Nominal motor power		Nominal current 3-460 V, 60 Hz	Motor efficiency
	P ₂		I	η _{m 100%}
	kW	hp	A	%
Helix EXCEL 10-16	2.20	3.0	4.4	93.0

Dimensions, weights Wilo-Helix EXCEL 10..

Dimension drawing



Dimensions, weights

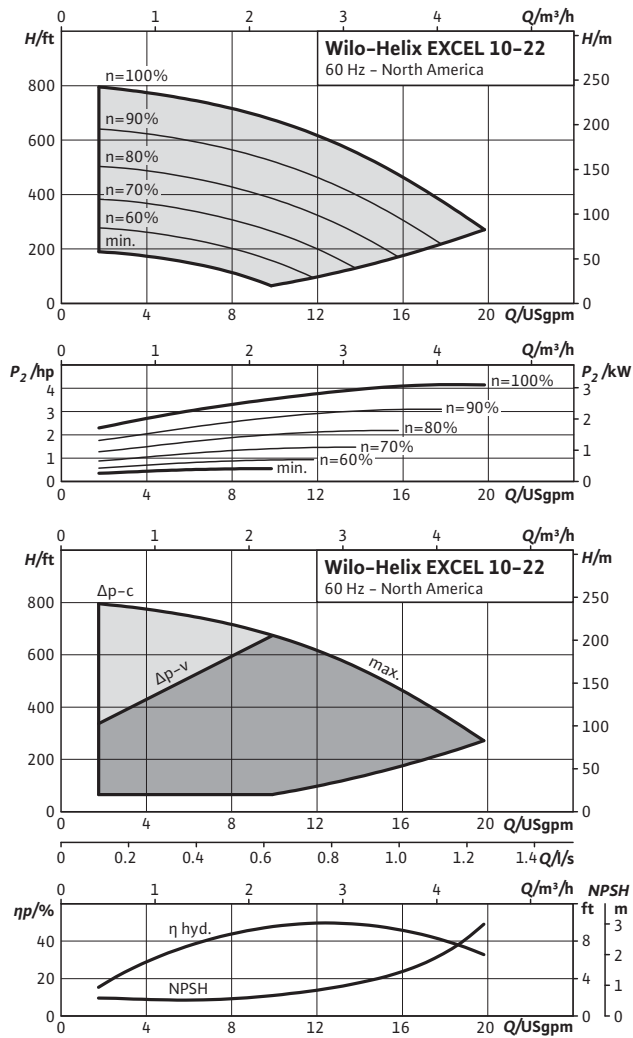
10-16	Maximum operating pressure		Dimensions								Weight approx.	
			p_{max}		H		$H2$		ϕM			
	psi	bar	in	mm	in	mm	in	mm	in	mm	kg	lbs
Helix EXCEL 10-16	362.6	25	46 ¹ / ₄	1175	33 ³ / ₈	847	8 ¹ / ₈	206	9 ³ / ₄	248	59	130

Pressure boosting

Single pumps

Pump curves, motor data Wilo-Helix EXCEL 10..

Wilo-Helix EXCEL 10-22

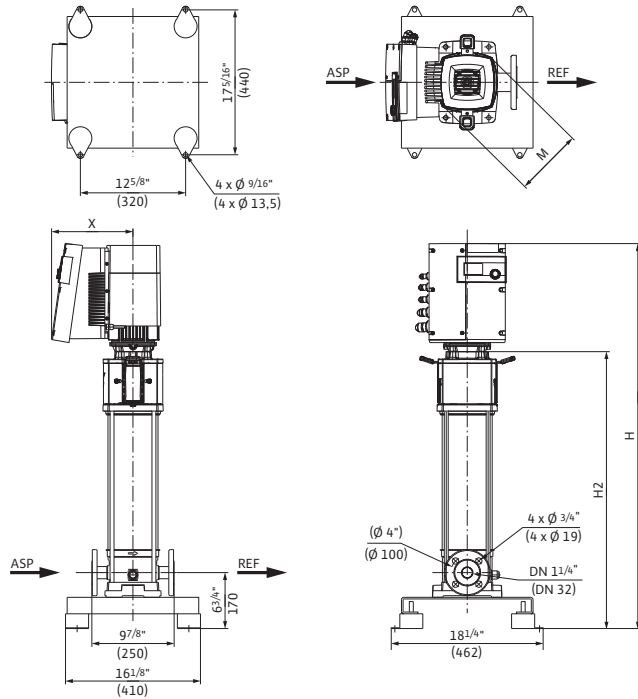


Motor data

10-22	Nominal motor power		Nominal current 3-460 V, 60 Hz	Motor efficiency
	P ₂			
	kW	hp	A	%
Helix EXCEL 10-22	3.20	4.3	6	93.0

Dimensions, weights Wilo-Helix EXCEL 10..

Dimension drawing



Dimensions, weights

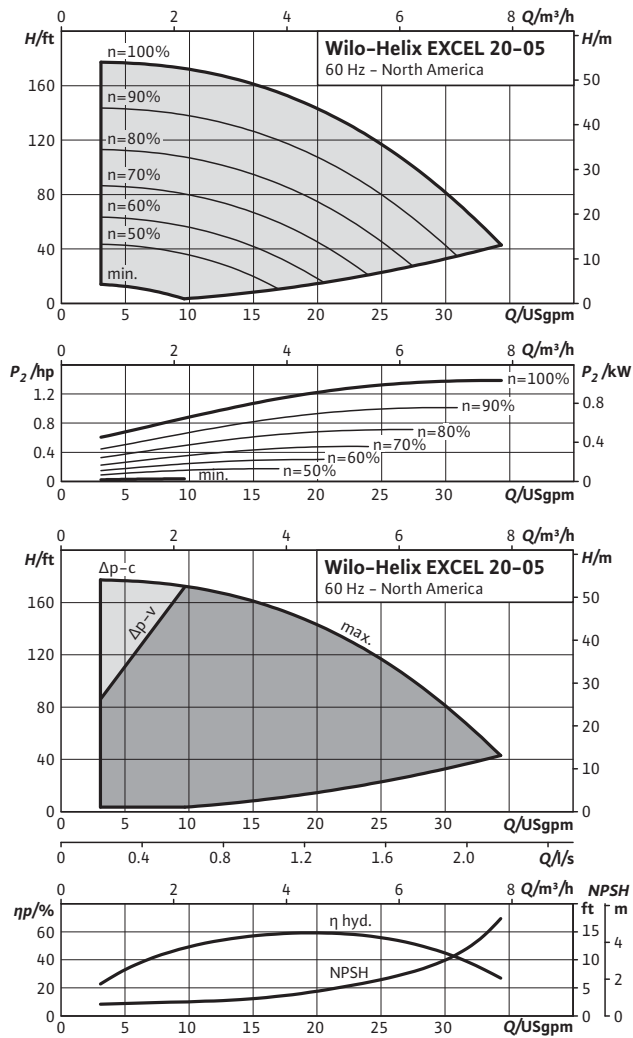
10-22	Maximum operating pressure		Dimensions								Weight approx.	
			p_{max}		H		$H2$		$\varnothing M$			
	psi	bar	in	mm	in	mm	in	mm	in	mm	kg	lbs
Helix EXCEL 10-22	362.6	25	54 ¹ / ₂	1385	41 ⁵ / ₈	1057	8 ¹ / ₈	206	9 ³ / ₄	248	62	137

Pressure boosting

Single pumps

Pump curves, motor data Wilo-Helix EXCEL 20..

Wilo-Helix EXCEL 20-05

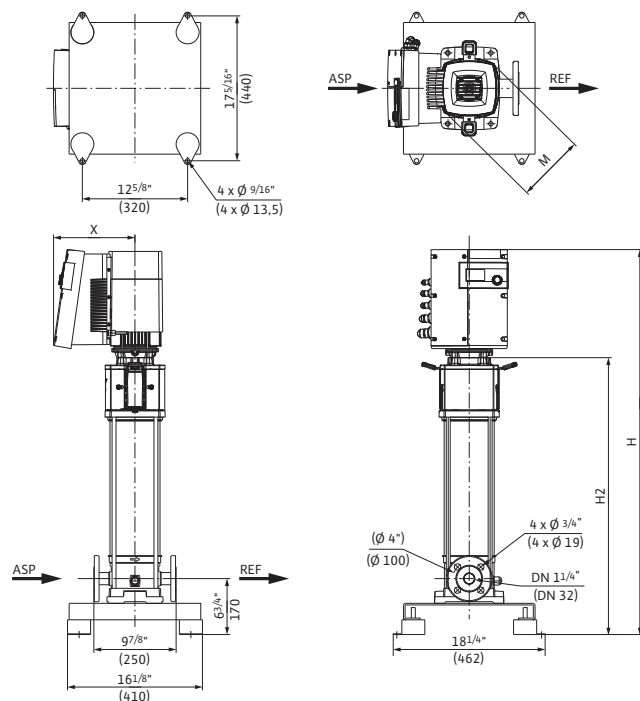


Motor data

20-05	Nominal motor power		Nominal current 3-460 V, 60 Hz	Motor efficiency
	P_2		I	$\eta_{m 100\%}$
	kW	hp	A	%
Helix EXCEL 20-05	1.10	1.5	1.76	92.0

Dimensions, weights Wilo-Helix EXCEL 20..

Dimension drawing



Dimensions, weights

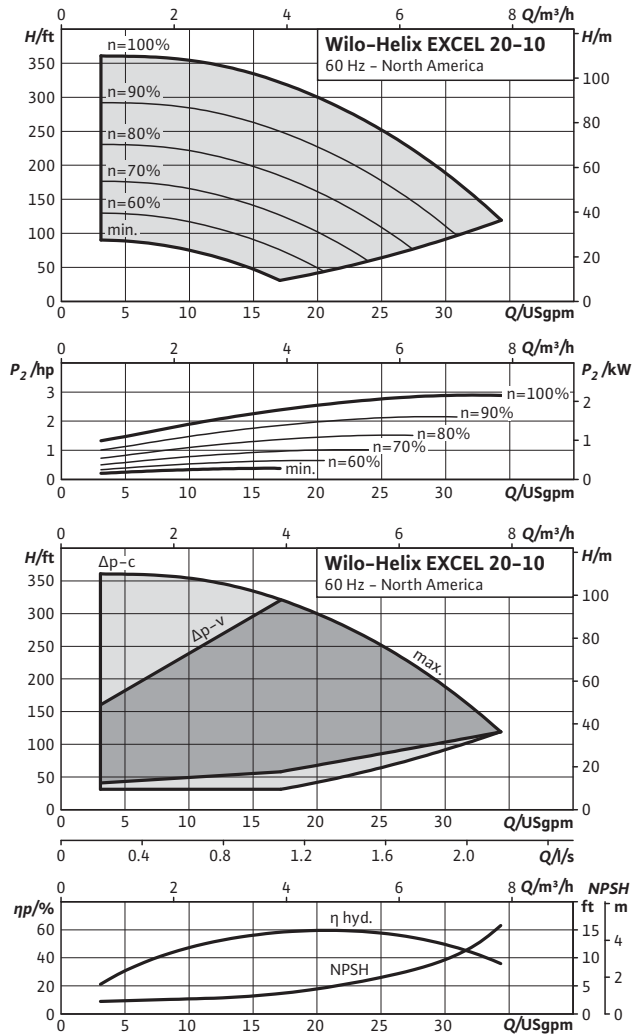
20-05	Maximum operating pressure		Dimensions								Weight approx.	
			p_{max}		H		$H2$		ϕM			
	psi	bar	in	mm	in	mm	in	mm	in	mm	kg	lbs
Helix EXCEL 20-05	362.6	25	35 ³ / ₁₆	894	22 ⁵ / ₁₆	566	8 ¹ / ₈	206	9 ³ / ₄	248	49	108

Pressure boosting

Single pumps

Pump curves, motor data Wilo-Helix EXCEL 20..

Wilo-Helix EXCEL 20-10

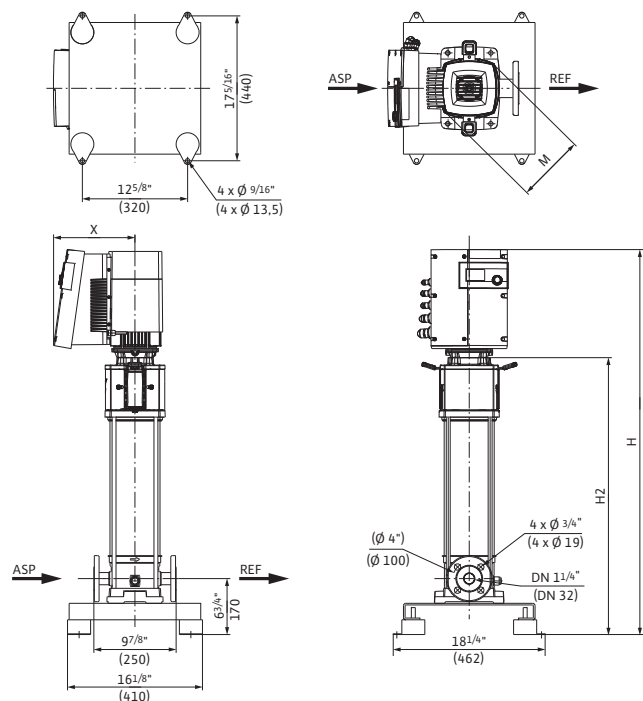


Motor data

20-10	Nominal motor power		Nominal current 3-460 V, 60 Hz	Motor efficiency
	P ₂		I	η _{m 100%}
	kW	hp	A	%
Helix EXCEL 20-10	2.20	3.0	4.4	93.0

Dimensions, weights Wilo-Helix EXCEL 20..

Dimension drawing



Dimensions, weights

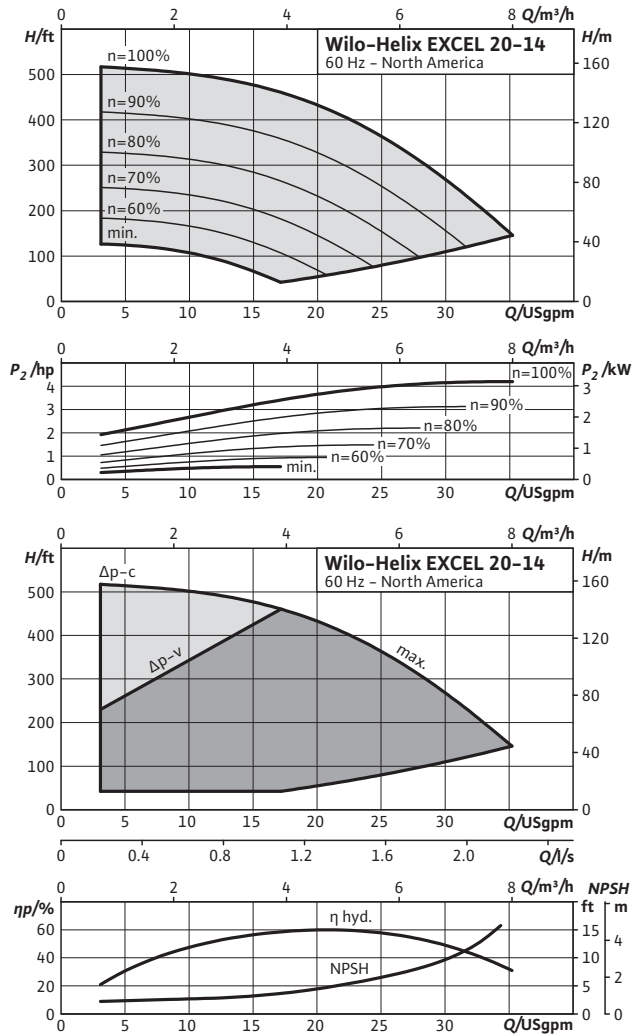
20-10	Maximum operating pressure		Dimensions								Weight approx.	
			p_{max}		H		$H2$		ϕM			
	psi	bar	in	mm	in	mm	in	mm	in	mm	kg	lbs
Helix EXCEL 20-10	362.6	25	40 ¹ / ₂	1029	27 ⁵ / ₈	701	8 ¹ / ₈	206	9 ³ / ₄	248	56	122

Pressure boosting

Single pumps

Pump curves, motor data Wilo-Helix EXCEL 20..

Wilo-Helix EXCEL 20-14

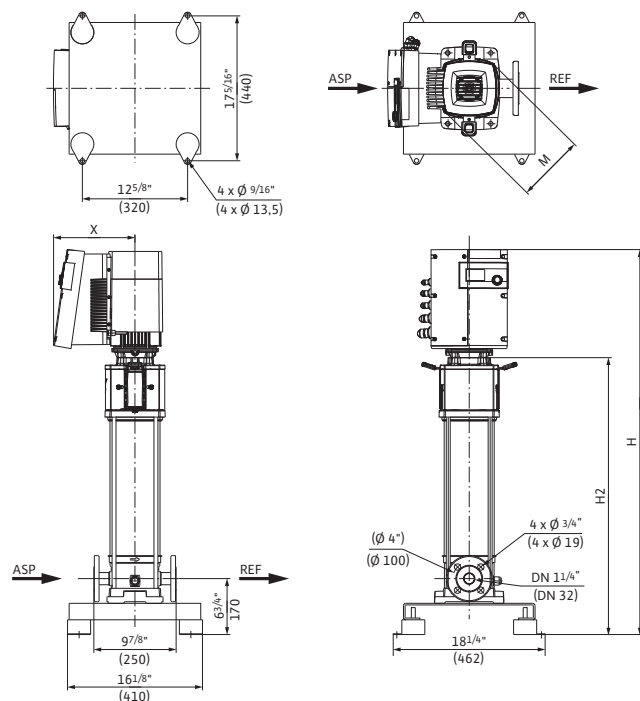


Motor data

20-14	Nominal motor power		Nominal current 3-460 V, 60 Hz	Motor efficiency
	P ₂			
	kW	hp	A	%
Helix EXCEL 20-14	3.20	4.3	6	93.0

Dimensions, weights Wilo-Helix EXCEL 20..

Dimension drawing



Dimensions, weights

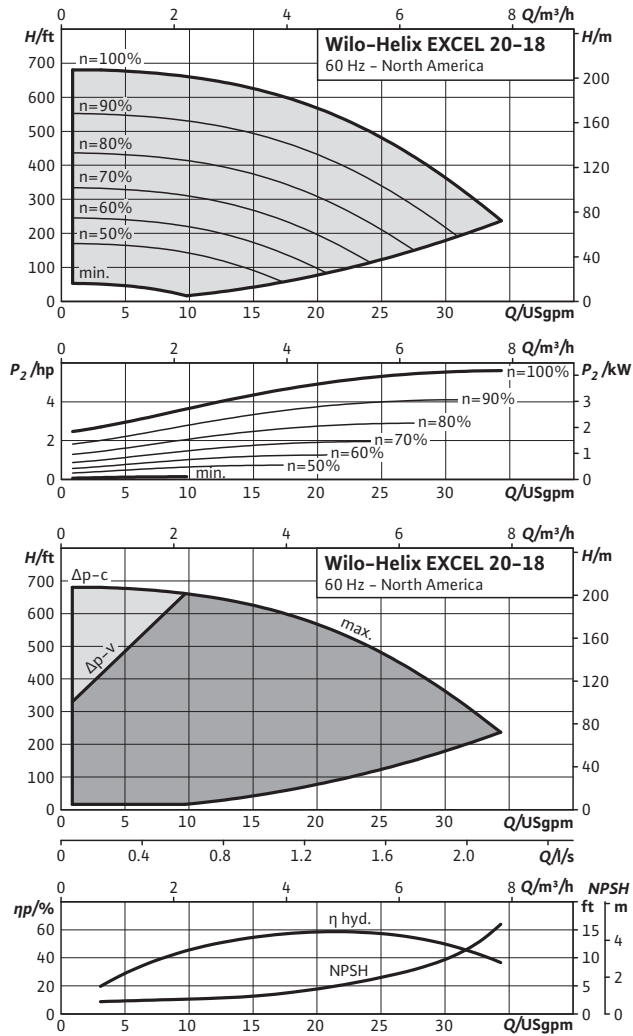
20-14	Maximum operating pressure		Dimensions								Weight approx.	
			p_{max}		H		$H2$		ϕM			
	psi	bar	in	mm	in	mm	in	mm	in	mm	kg	lbs
Helix EXCEL 20-14	362.6	25	44 ⁷ / ₁₆	1129	31 ⁹ / ₁₆	801	8 ¹ / ₈	206	9 ³ / ₄	248	57	126

Pressure boosting

Single pumps

Pump curves, motor data Wilo-Helix EXCEL 20..

Wilo-Helix EXCEL 20-18

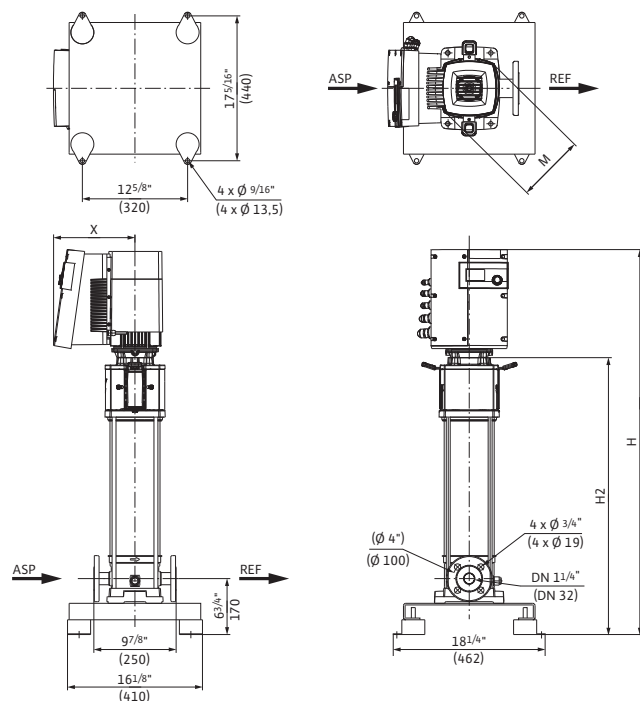


Motor data

20-18	Nominal motor power		Nominal current 3-460 V, 60 Hz	Motor efficiency
	P ₂			
	kW	hp	A	%
Helix EXCEL 20-18	4.20	5.6	6.5	95.8

Dimensions, weights Wilo-Helix EXCEL 20..

Dimension drawing



Dimensions, weights

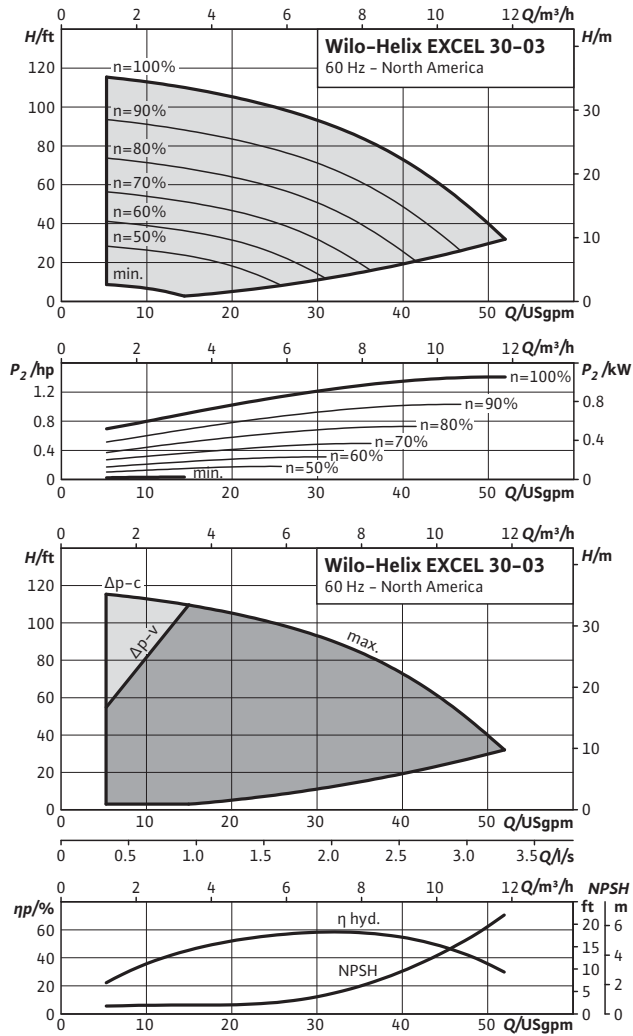
20-18	Maximum operating pressure		Dimensions								Weight approx.	
			H		$H2$		$\varnothing M$		X			
	psi	bar	in	mm	in	mm	in	mm	in	mm	kg	lbs
Helix EXCEL 20-18	362.6	25	56 ³ / ₄	1441	40 ⁹ / ₁₆	1031	8 ³ / ₄	223	10 ⁹ / ₁₆	268	72	159

Pressure boosting

Single pumps

Pump curves, motor data Wilo-Helix EXCEL 30..

Wilo-Helix EXCEL 30-03

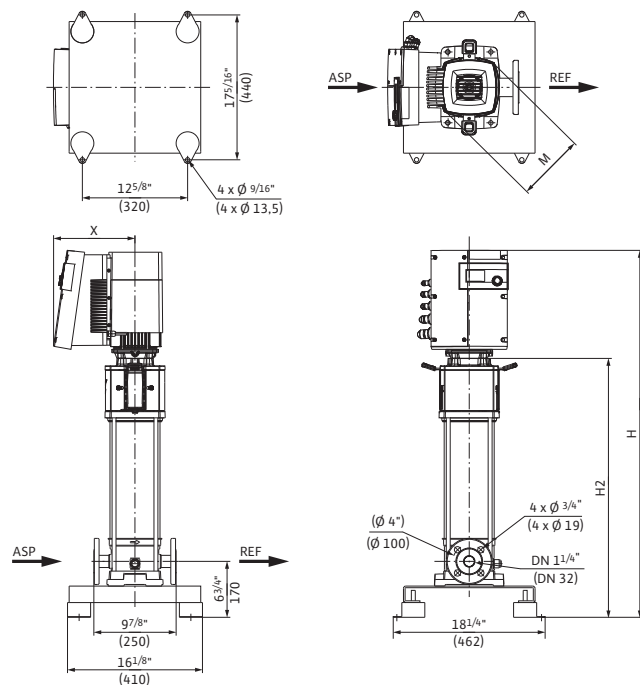


Motor data

30-03	Nominal motor power		Nominal current 3-460 V, 60 Hz	Motor efficiency
	P ₂			
	kW	hp	A	%
Helix EXCEL 30-03	1.10	1.5	1.76	92.0

Dimensions, weights Wilo-Helix EXCEL 30..

Dimension drawing



Dimensions, weights

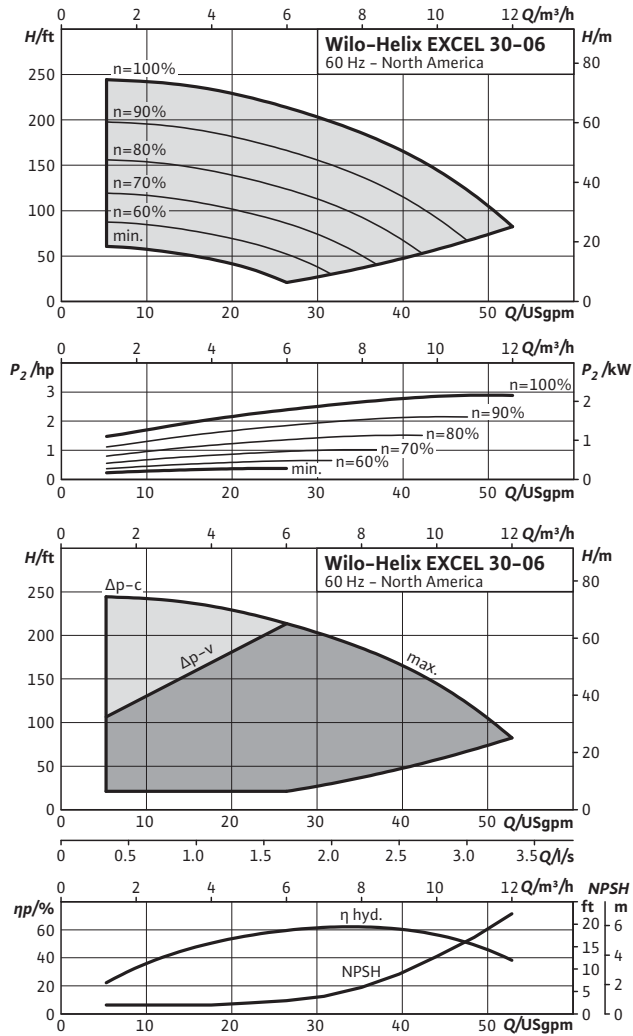
30-03	Maximum operating pressure		Dimensions								Weight approx.	
			p_{max}		H		$H2$		ϕM			
	psi	bar	in	mm	in	mm	in	mm	in	mm	kg	lbs
Helix EXCEL 30-03	362.6	25	34 ³ / ₄	882	21 ¹³ / ₁₆	554	8 ¹ / ₈	206	9 ³ / ₄	248	49	108

Pressure boosting

Single pumps

Pump curves, motor data Wilo-Helix EXCEL 30..

Wilo-Helix EXCEL 30-06

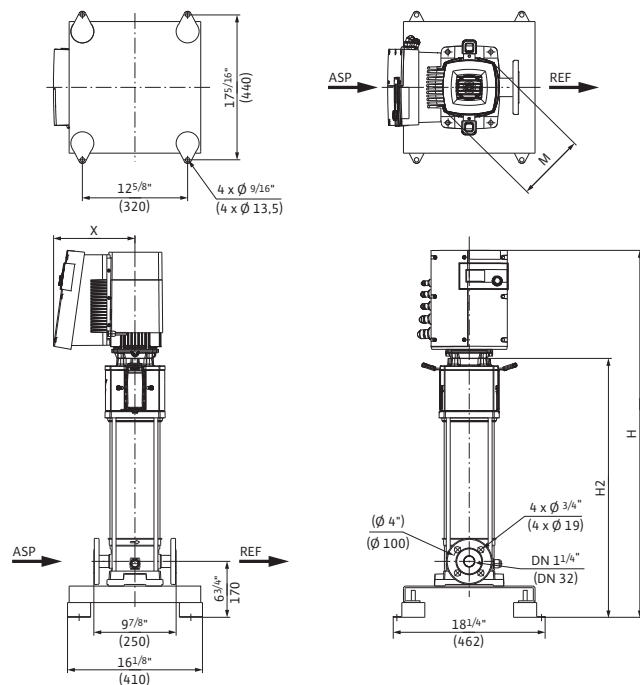


Motor data

30-06	Nominal motor power		Nominal current 3-460 V, 60 Hz	Motor efficiency
	P ₂			
	kW	hp	A	%
Helix EXCEL 30-06	2.20	3.0	4.4	93.0

Dimensions, weights Wilo-Helix EXCEL 30..

Dimension drawing



Dimensions, weights

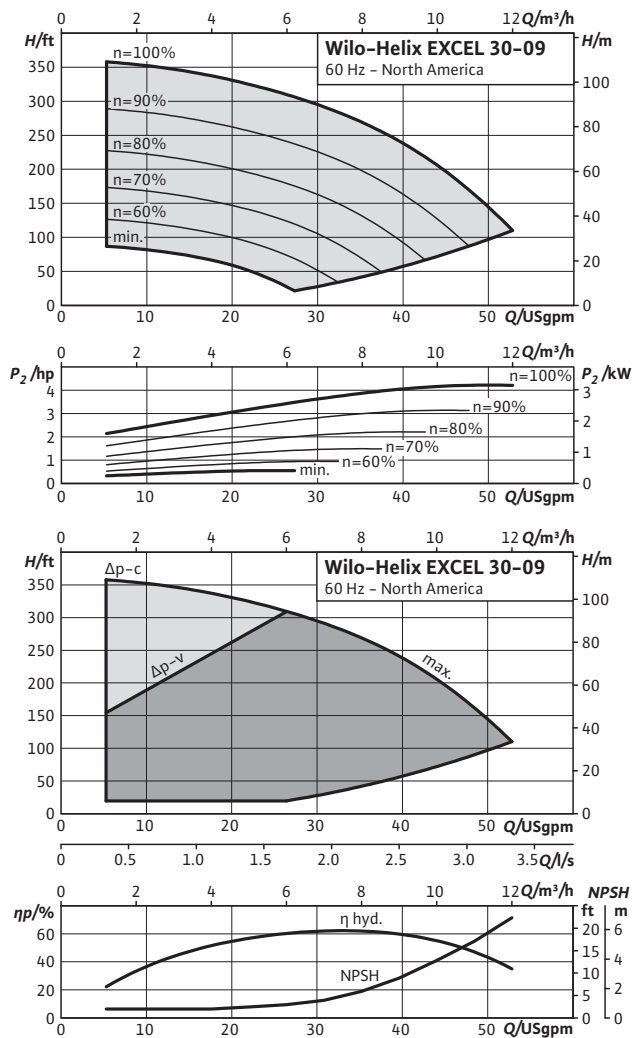
30-06	Maximum operating pressure		Dimensions								Weight approx.	
			p_{max}		H		$H2$		ϕM			
	psi	bar	in	mm	in	mm	in	mm	in	mm	kg	lbs
Helix EXCEL 30-06	362.6	25	39 ¹ / ₂	1004	26 ⁵ / ₈	676	8 ¹ / ₈	206	9 ³ / ₄	248	54	118

Pressure boosting

Single pumps

Pump curves, motor data Wilo-Helix EXCEL 30..

Wilo-Helix EXCEL 30-09

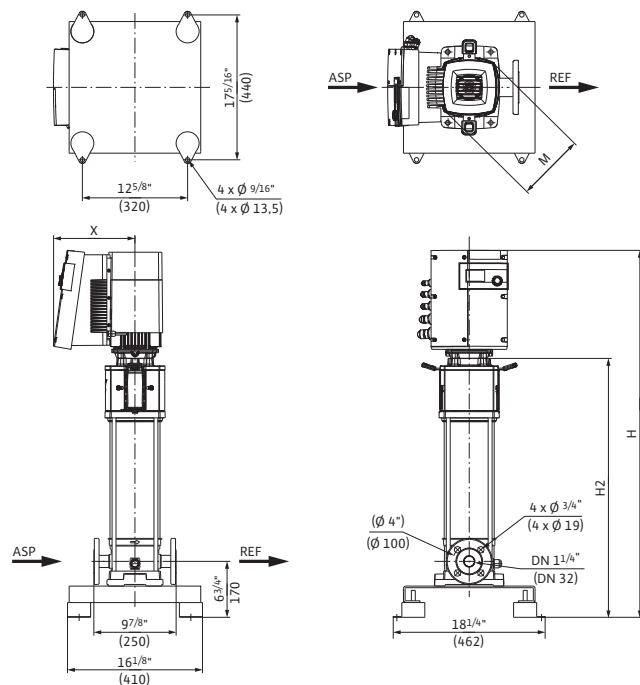


Motor data

30-09	Nominal motor power		Nominal current 3-460 V, 60 Hz	Motor efficiency
	P ₂			
	kW	hp	A	%
Helix EXCEL 30-09	3.20	4.3	6	93.0

Dimensions, weights Wilo-Helix EXCEL 30..

Dimension drawing



Dimensions, weights

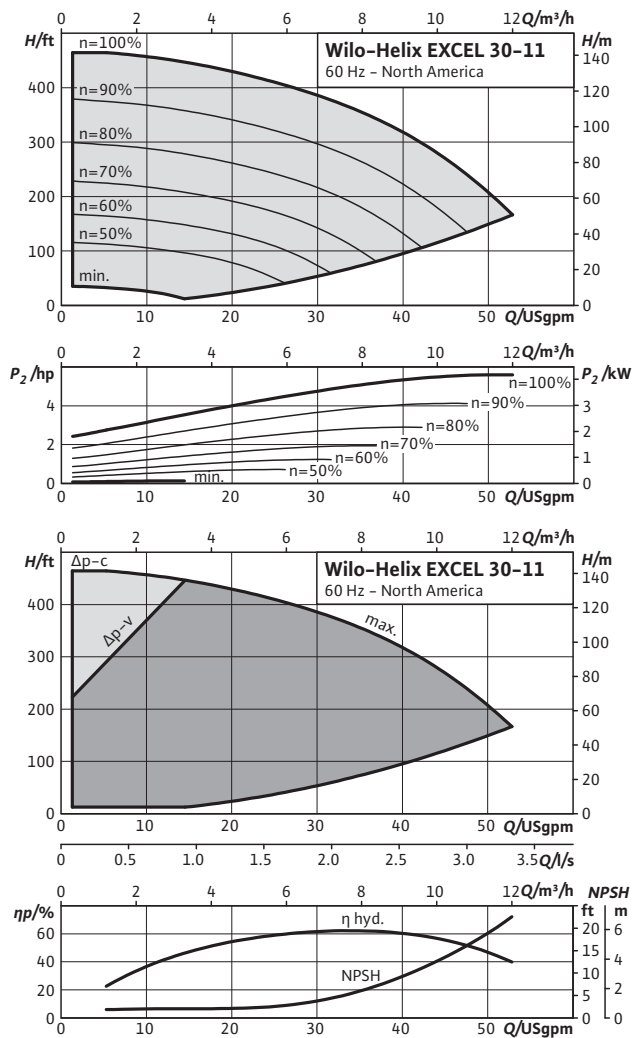
30-09	Maximum operating pressure		Dimensions								Weight approx.	
	p_{max}		H		$H2$		ϕM		X		m	
	psi	bar	in	mm	in	mm	in	mm	in	mm	kg	lbs
Helix EXCEL 30-09	362.6	25	44	1117	31 ^{1/16}	789	8 ^{1/8}	206	9 ^{3/4}	248	57	126

Pressure boosting

Single pumps

Pump curves, motor data Wilo-Helix EXCEL 30..

Wilo-Helix EXCEL 30-11

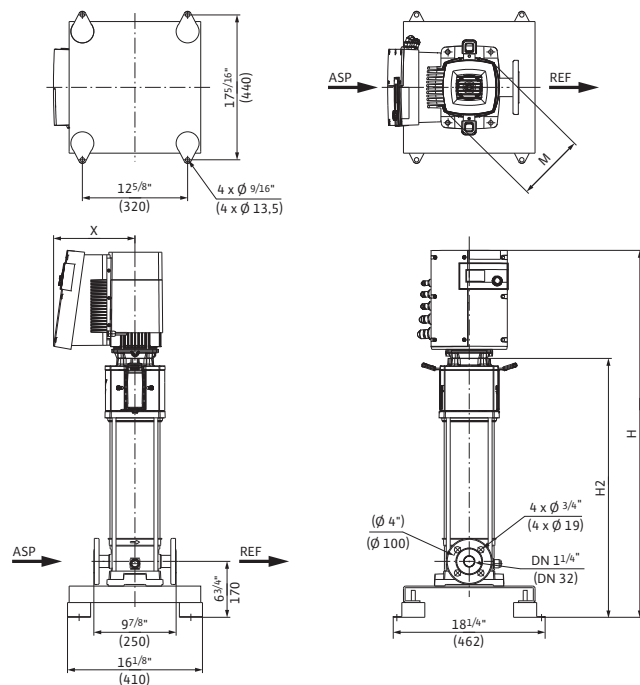


Motor data

30-11	Nominal motor power		Nominal current 3-460 V, 60 Hz	Motor efficiency
	P_2			
	kW	hp	A	%
Helix EXCEL 30-11	4.20	5.6	6.5	95.8

Dimensions, weights Wilo-Helix EXCEL 30..

Dimension drawing



Dimensions, weights

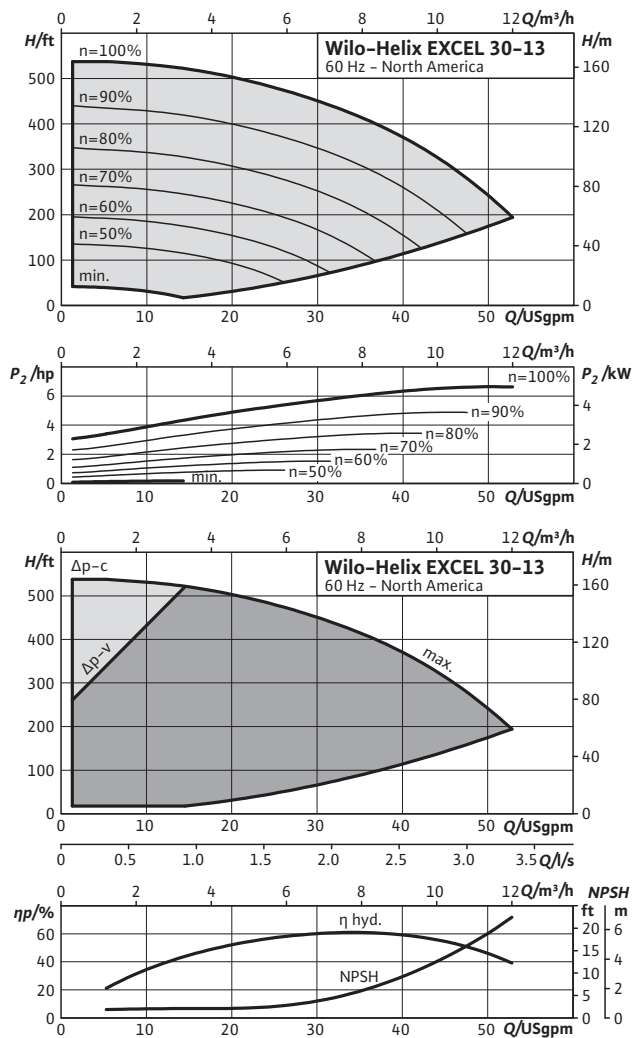
30-11	Maximum operating pressure		Dimensions								Weight approx.	
			p_{max}		H		$H2$		ϕM			
	psi	bar	in	mm	in	mm	in	mm	in	mm	kg	lbs
Helix EXCEL 30-11	362.6	25	56 ³ / ₄	1441	40 ⁹ / ₁₆	1031	8 ³ / ₄	223	10 ⁹ / ₁₆	268	73	161

Pressure boosting

Single pumps

Pump curves, motor data Wilo-Helix EXCEL 30..

Wilo-Helix EXCEL 30-13

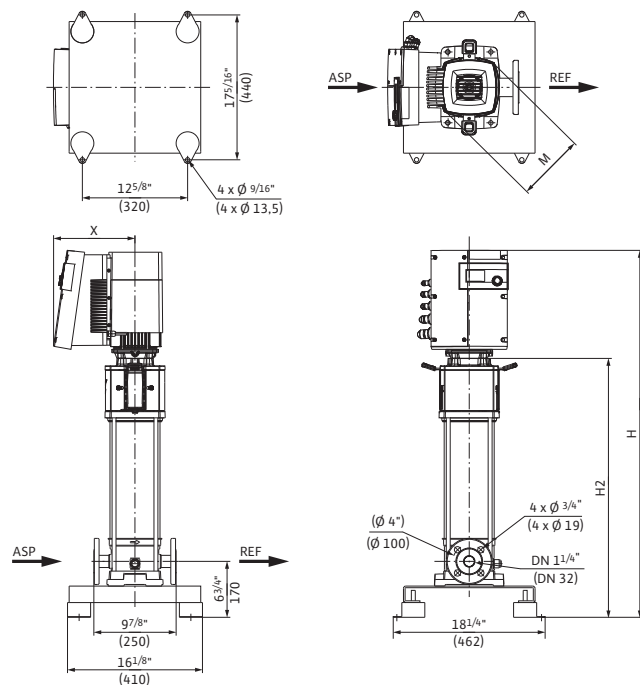


Motor data

30-13	Nominal motor power		Nominal current 3-460 V, 60 Hz	Motor efficiency
	P ₂			
	kW	hp	A	%
Helix EXCEL 30-13	5.50	7.4	8.2	95.8

Dimensions, weights Wilo-Helix EXCEL 30..

Dimension drawing



Dimensions, weights

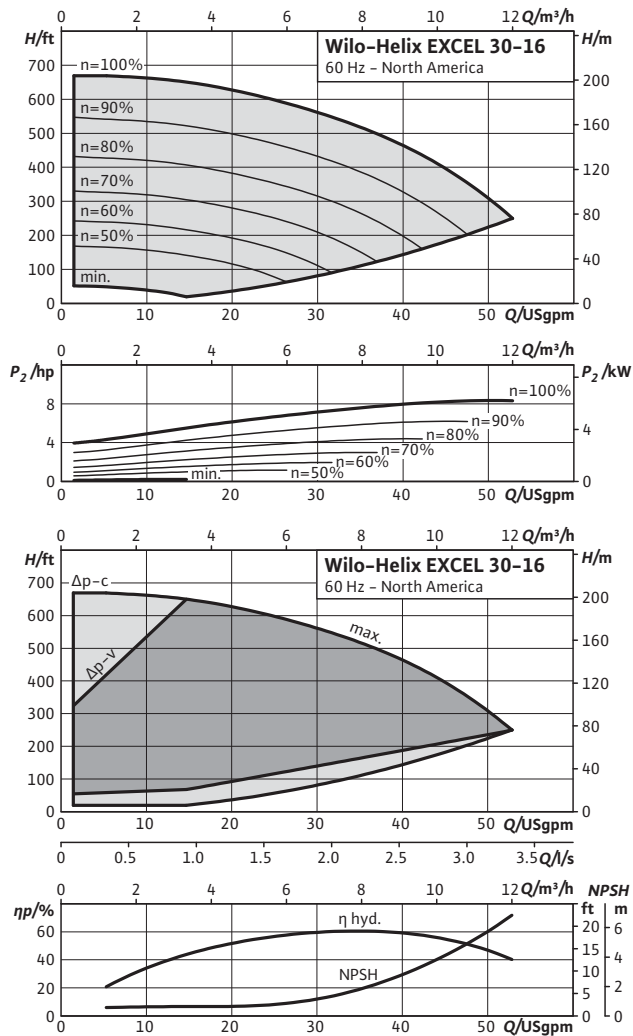
30-13	Maximum operating pressure		Dimensions								Weight approx.	
			p_{max}		H		$H2$		ϕM			
	psi	bar	in	mm	in	mm	in	mm	in	mm	kg	lbs
Helix EXCEL 30-13	362.6	25	59 ¹¹ / ₁₆	1516	43 ⁹ / ₁₆	1106	8 ³ / ₄	223	10 ⁹ / ₁₆	268	80	176

Pressure boosting

Single pumps

Pump curves, motor data Wilo-Helix EXCEL 30..

Wilo-Helix EXCEL 30-16

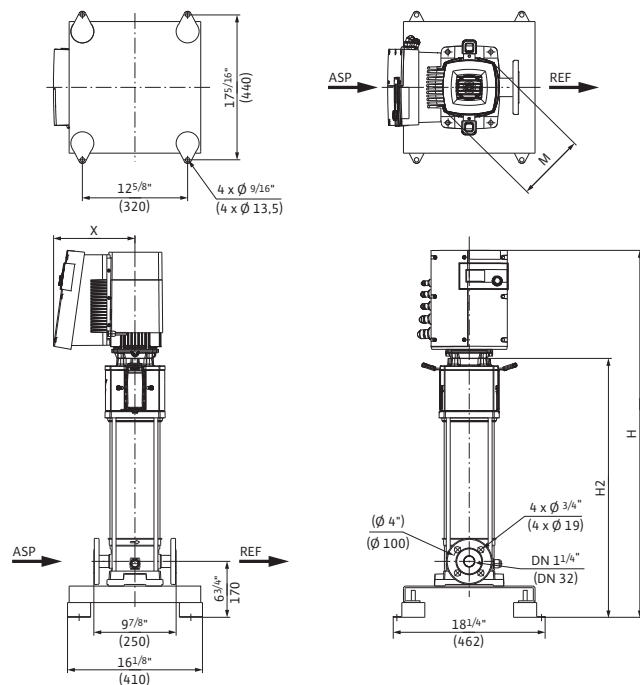


Motor data

30-16	Nominal motor power		Nominal current 3-460 V, 60 Hz	Motor efficiency
	P ₂			
	kW	hp	A	%
Helix EXCEL 30-16	6.50	8.7	9.7	96.5

Dimensions, weights Wilo-Helix EXCEL 30..

Dimension drawing



Dimensions, weights

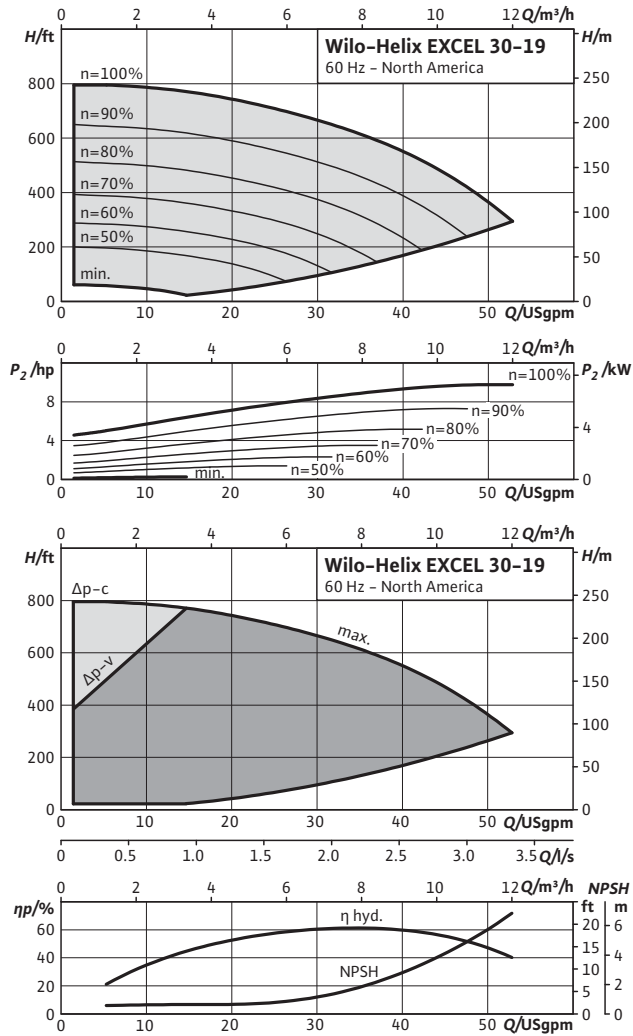
30-16	Maximum operating pressure		Dimensions								Weight approx.	
			p_{max}		H		$H2$		ϕM			
	psi	bar	in	mm	in	mm	in	mm	in	mm	kg	lbs
Helix EXCEL 30-16	362.6	25	63 ⁹ / ₁₆	1614	46 ¹ / ₂	1181	9 ³ / ₄	248	11	280	95	209

Pressure boosting

Single pumps

Pump curves, motor data Wilo-Helix EXCEL 30..

Wilo-Helix EXCEL 30-19

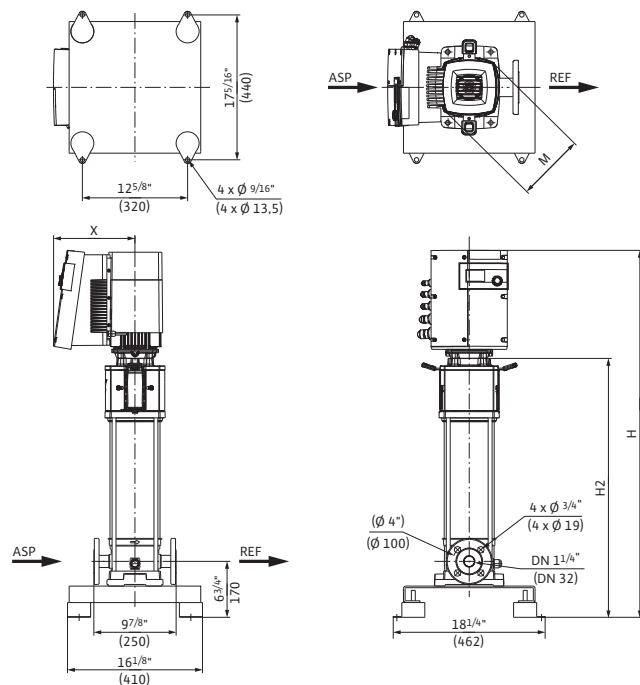


Motor data

30-19	Nominal motor power		Nominal current 3-460 V, 60 Hz	Motor efficiency
	P_2		I	$\eta_{m 100\%}$
	kW	hp	A	%
Helix EXCEL 30-19	7.50	10.1	10.9	96.4

Dimensions, weights Wilo-Helix EXCEL 30..

Dimension drawing



Dimensions, weights

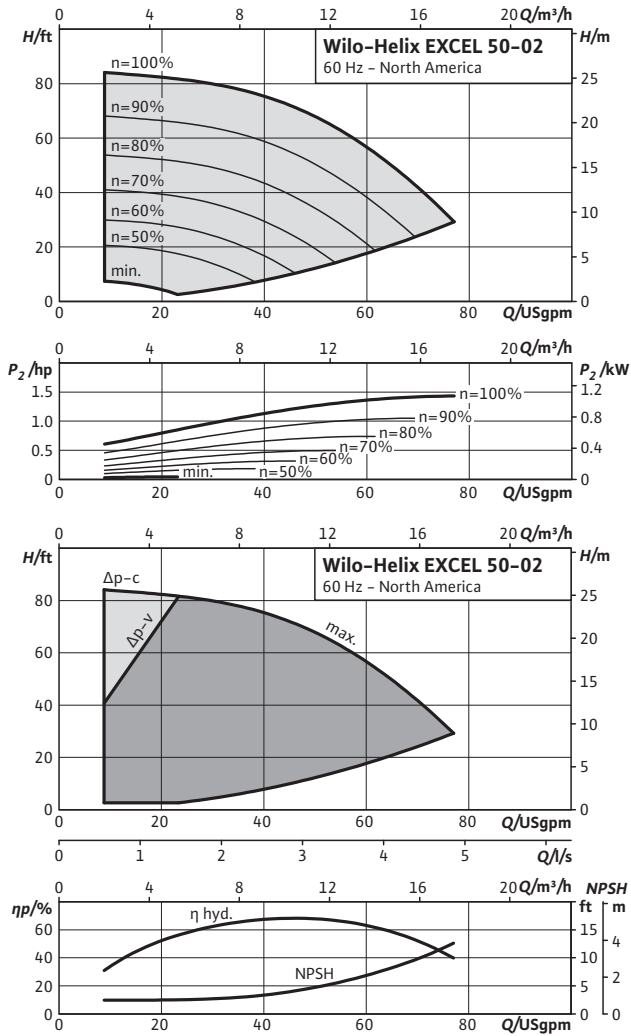
30-19	Maximum operating pressure		Dimensions								Weight approx.	
			p_{max}		H		$H2$		ϕM			
	psi	bar	in	mm	in	mm	in	mm	in	mm	kg	lbs
Helix EXCEL 30-19	362.6	25	69 ⁷ / ₁₆	1764	52 ³ / ₈	1331	9 ³ / ₄	248	11	280	98	216

Pressure boosting

Single pumps

Pump curves, motor data Wilo-Helix EXCEL 50..

Wilo-Helix EXCEL 50-02

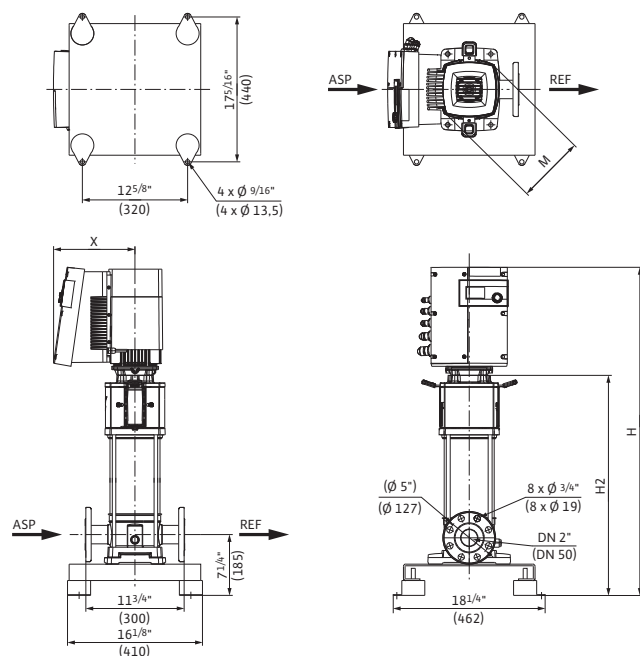


Motor data

50-02	Nominal motor power		Nominal current 3-460 V, 60 Hz	Motor efficiency
	P_2			
	kW	hp	A	%
Helix EXCEL 50-02	1.10	1.5	1.76	92.0

Dimensions, weights Wilo-Helix EXCEL 50..

Dimension drawing



Dimensions, weights

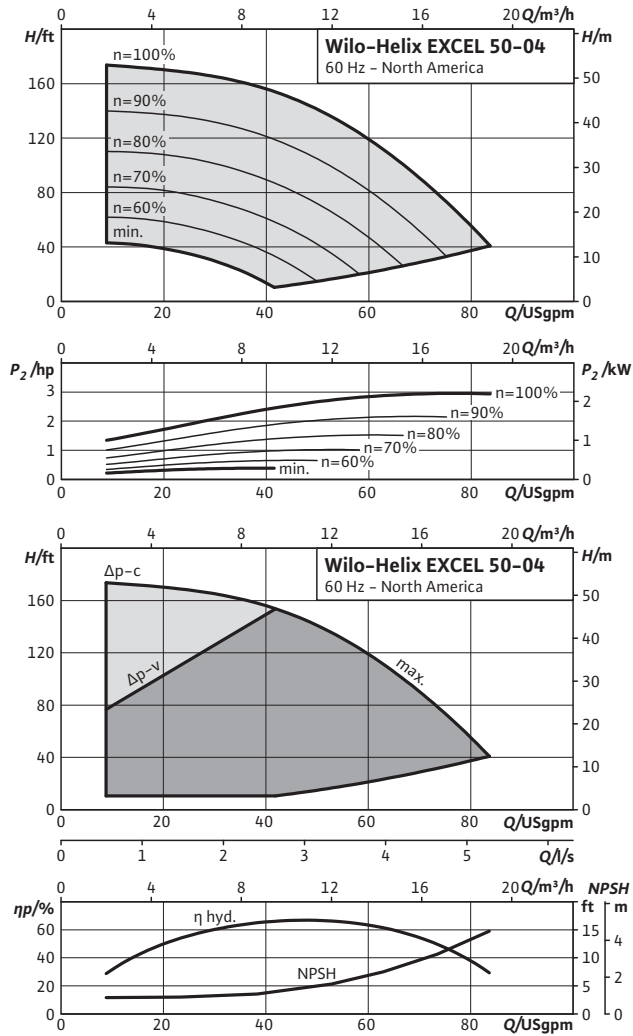
50-02	Maximum operating pressure		Dimensions								Weight approx.	
			H		$H2$		$\varnothing M$		X			
	psi	bar	in	mm	in	mm	in	mm	in	mm	kg	lbs
Helix EXCEL 50-02	232.1	16	33 ¹ / ₁₆	840	20 ³ / ₁₆	512	8 ¹ / ₈	206	9 ³ / ₄	248	50	110

Pressure boosting

Single pumps

Pump curves, motor data Wilo-Helix EXCEL 50..

Wilo-Helix EXCEL 50-04

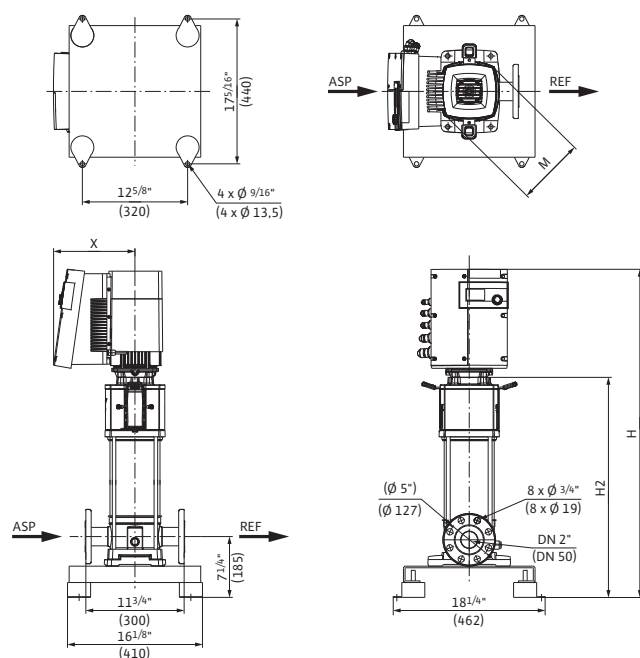


Motor data

50-04	Nominal motor power		Nominal current 3-460 V, 60 Hz	Motor efficiency
	P ₂			
	kW	hp	A	%
Helix EXCEL 50-04	2.20	3.0	4.4	93.0

Dimensions, weights Wilo-Helix EXCEL 50..

Dimension drawing



Dimensions, weights

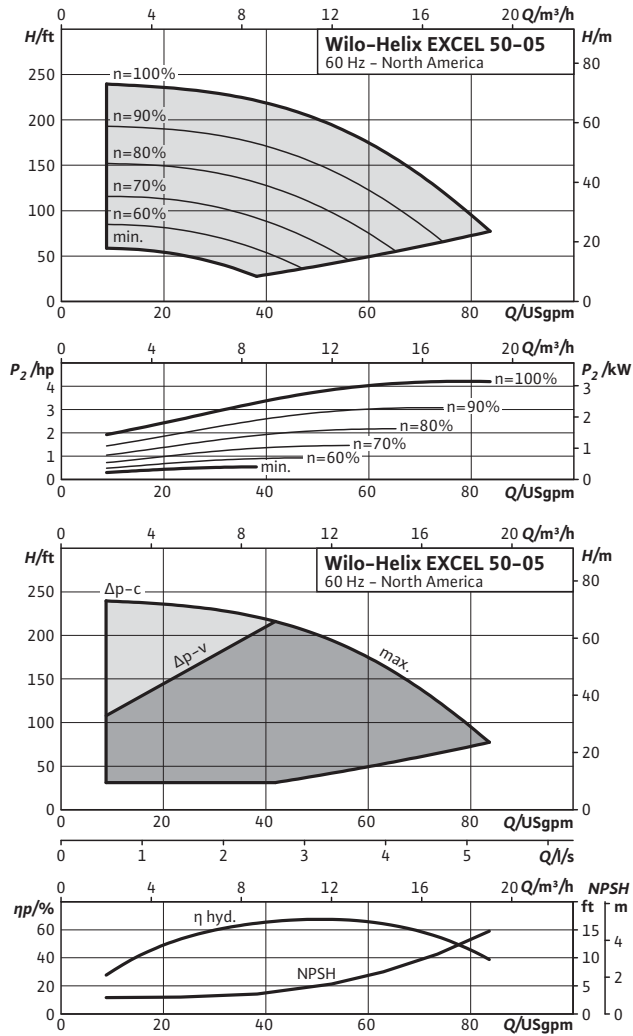
50-04	Maximum operating pressure		Dimensions								Weight approx.	
			p_{max}		H		$H2$		ϕM			
	psi	bar	in	mm	in	mm	in	mm	in	mm	kg	lbs
Helix EXCEL 50-04	232.1	16	36 ⁷ / ₁₆	925	23 ¹ / ₂	597	8 ¹ / ₈	206	9 ³ / ₄	248	54	119

Pressure boosting

Single pumps

Pump curves, motor data Wilo-Helix EXCEL 50..

Wilo-Helix EXCEL 50-05

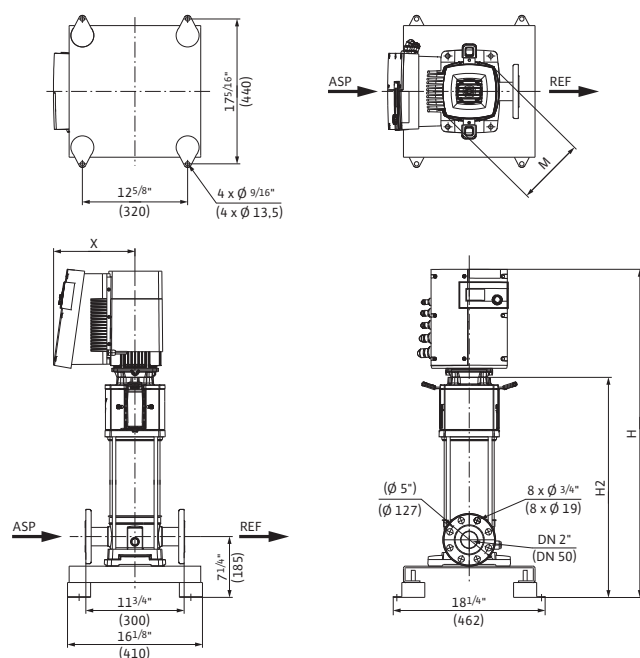


Motor data

50-05	Nominal motor power		Nominal current 3-460 V, 60 Hz	Motor efficiency
	P ₂			
	kW	hp	A	%
Helix EXCEL 50-05	3.20	4.3	6	93.0

Dimensions, weights Wilo-Helix EXCEL 50..

Dimension drawing



Dimensions, weights

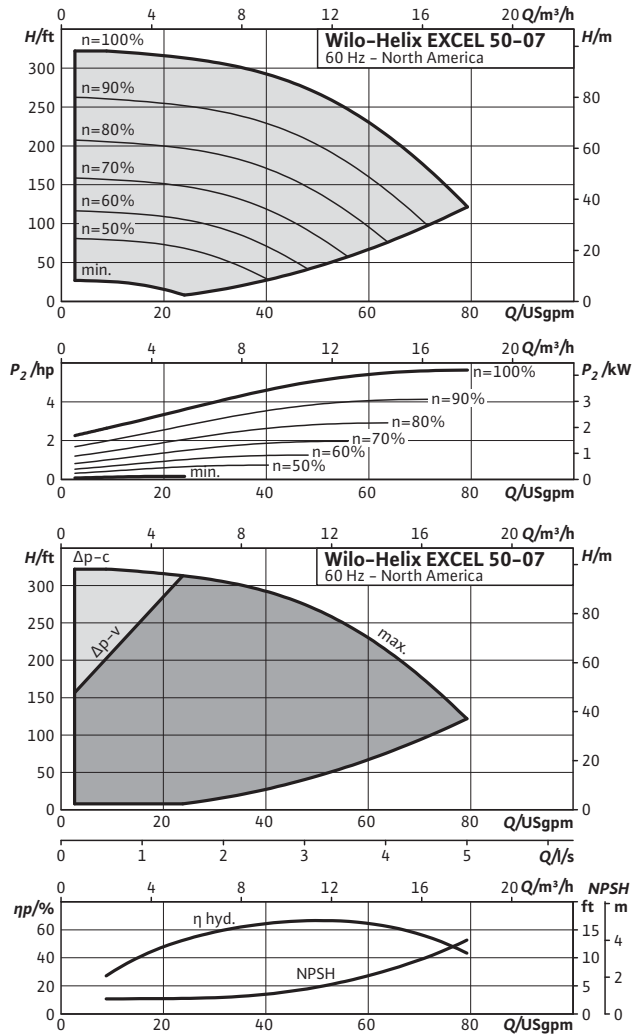
50-05	Maximum operating pressure		Dimensions								Weight approx.	
			p_{max}		H		$H2$		ϕM			
	psi	bar	in	mm	in	mm	in	mm	in	mm	kg	lbs
Helix EXCEL 50-05	362.6	25	37 ¹⁵ / ₁₆	963	25	635	8 ¹ / ₈	206	9 ³ / ₄	248	55	121

Pressure boosting

Single pumps

Pump curves, motor data Wilo-Helix EXCEL 50..

Wilo-Helix EXCEL 50-07

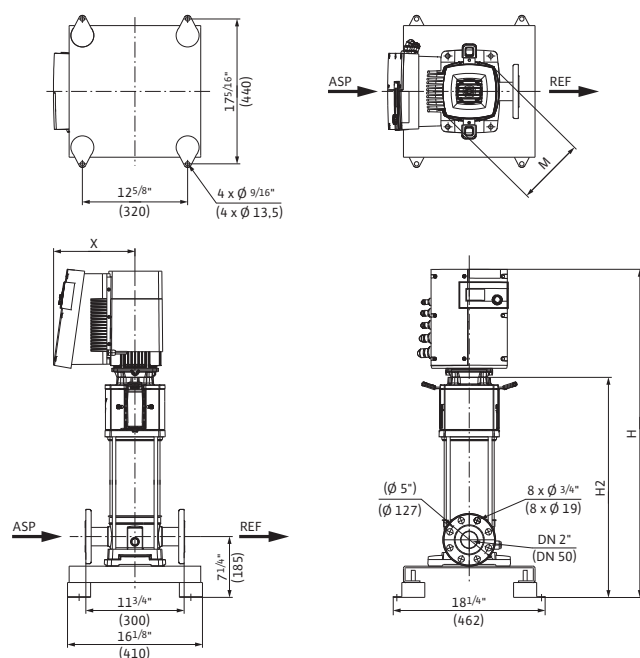


Motor data

50-07	Nominal motor power		Nominal current 3-460 V, 60 Hz	Motor efficiency
	P ₂			
	kW	hp	A	%
Helix EXCEL 50-07	4.20	5.6	6.5	95.8

Dimensions, weights Wilo-Helix EXCEL 50..

Dimension drawing



Dimensions, weights

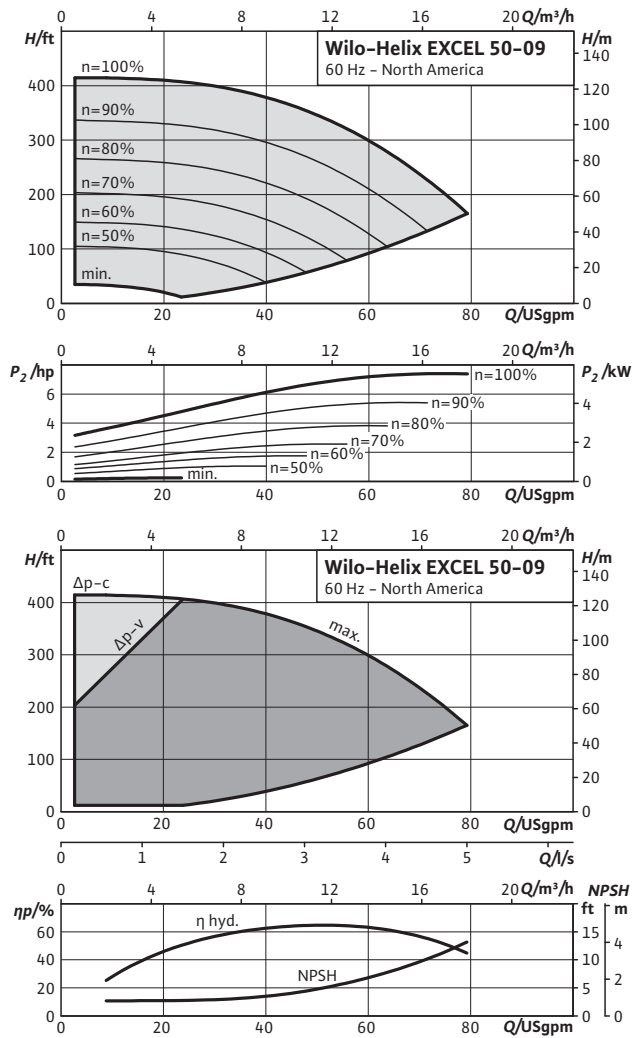
50-07	Maximum operating pressure		Dimensions								Weight approx.	
			p_{max}		H		$H2$		ϕM			
	psi	bar	in	mm	in	mm	in	mm	in	mm	kg	lbs
Helix EXCEL 50-07	232.1	16	49 ³ / ₁₆	1250	33 ¹ / ₁₆	840	8 ³ / ₄	223	10 ⁹ / ₁₆	268	70	154

Pressure boosting

Single pumps

Pump curves, motor data Wilo-Helix EXCEL 50..

Wilo-Helix EXCEL 50-09

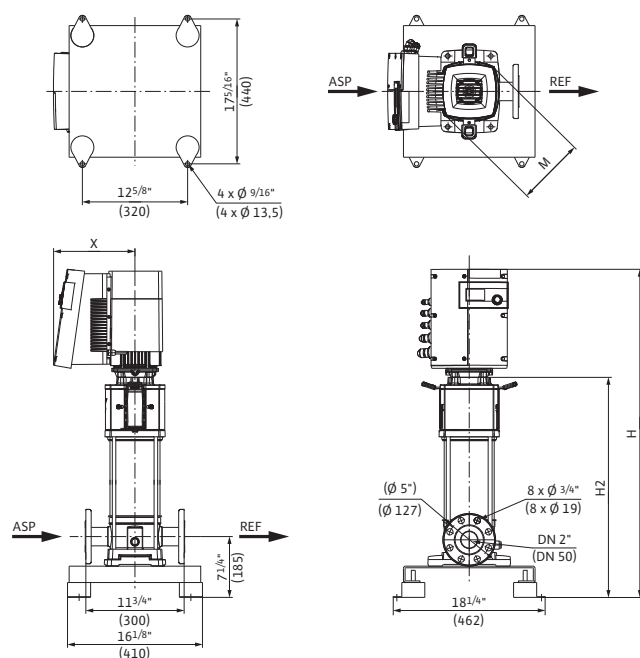


Motor data

50-09	Nominal motor power		Nominal current 3-460 V, 60 Hz	Motor efficiency
	P ₂			
	kW	hp	A	%
Helix EXCEL 50-09	5.50	7.4	8.2	95.8

Dimensions, weights Wilo-Helix EXCEL 50..

Dimension drawing



Dimensions, weights

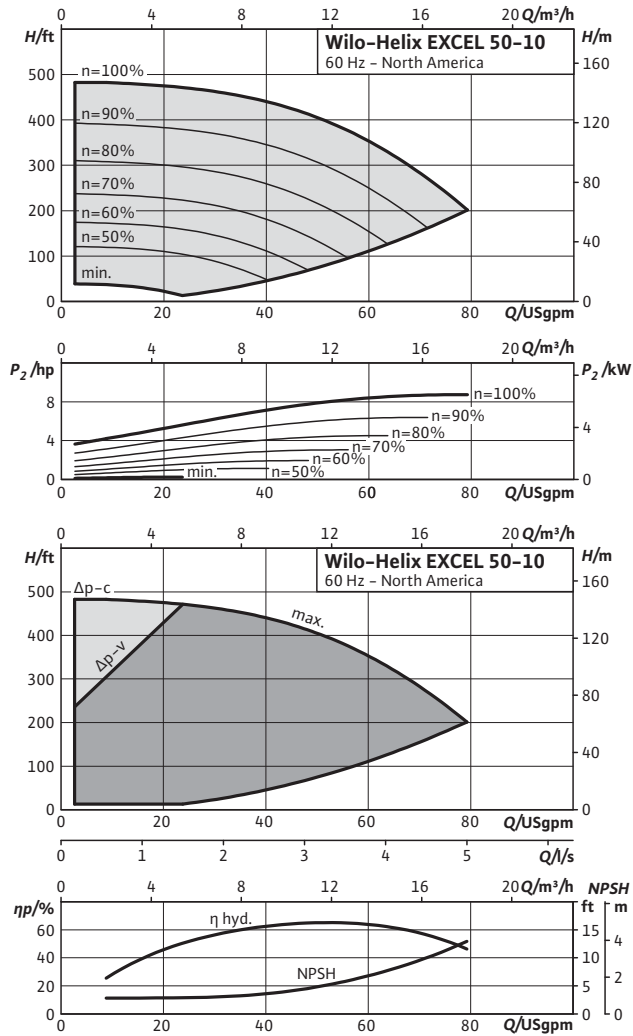
50-09	Maximum operating pressure		Dimensions								Weight approx.	
			p_{max}		H		$H2$		ϕM			
	psi	bar	in	mm	in	mm	in	mm	in	mm	kg	lbs
Helix EXCEL 50-09	232.1	16	52 ³ / ₁₆	1325	36	915	8 ³ / ₄	223	10 ⁹ / ₁₆	268	86	190

Pressure boosting

Single pumps

Pump curves, motor data Wilo-Helix EXCEL 50..

Wilo-Helix EXCEL 50-10

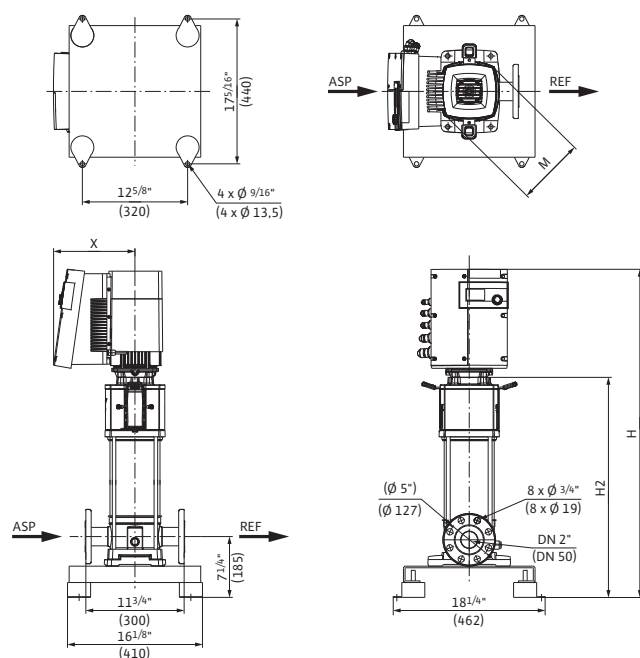


Motor data

50-10	Nominal motor power		Nominal current 3-460 V, 60 Hz	Motor efficiency
	P ₂			
	kW	hp	A	%
Helix EXCEL 50-10	6.50	8.7	9.7	96.5

Dimensions, weights Wilo-Helix EXCEL 50..

Dimension drawing



Dimensions, weights

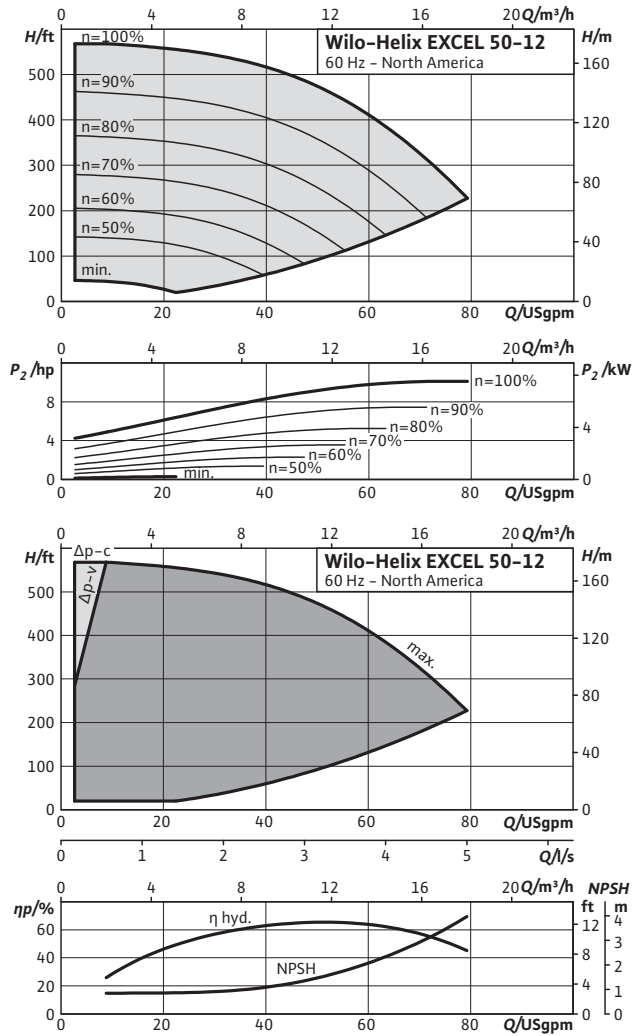
50-10	Maximum operating pressure		Dimensions								Weight approx.	
			p_{max}		H		$H2$		ϕM			
	psi	bar	in	mm	in	mm	in	mm	in	mm	kg	lbs
Helix EXCEL 50-10	232.1	16	54 ¹ / ₂	1385	37 ¹ / ₂	952	9 ³ / ₄	248	11	280	92	203

Pressure boosting

Single pumps

Pump curves, motor data Wilo-Helix EXCEL 50..

Wilo-Helix EXCEL 50-12

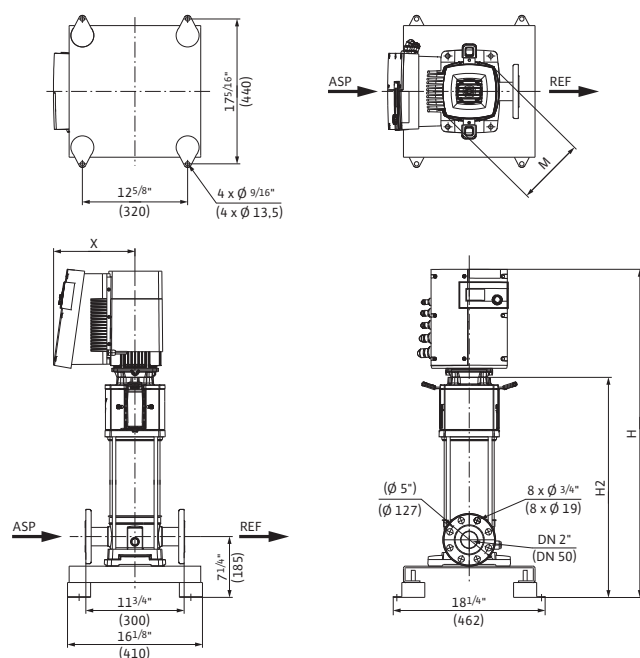


Motor data

50-12	Nominal motor power		Nominal current 3-460 V, 60 Hz	Motor efficiency
	P_2			
	kW	hp	A	%
Helix EXCEL 50-12	7.50	10.1	10.9	96.4

Dimensions, weights Wilo-Helix EXCEL 50..

Dimension drawing



Dimensions, weights

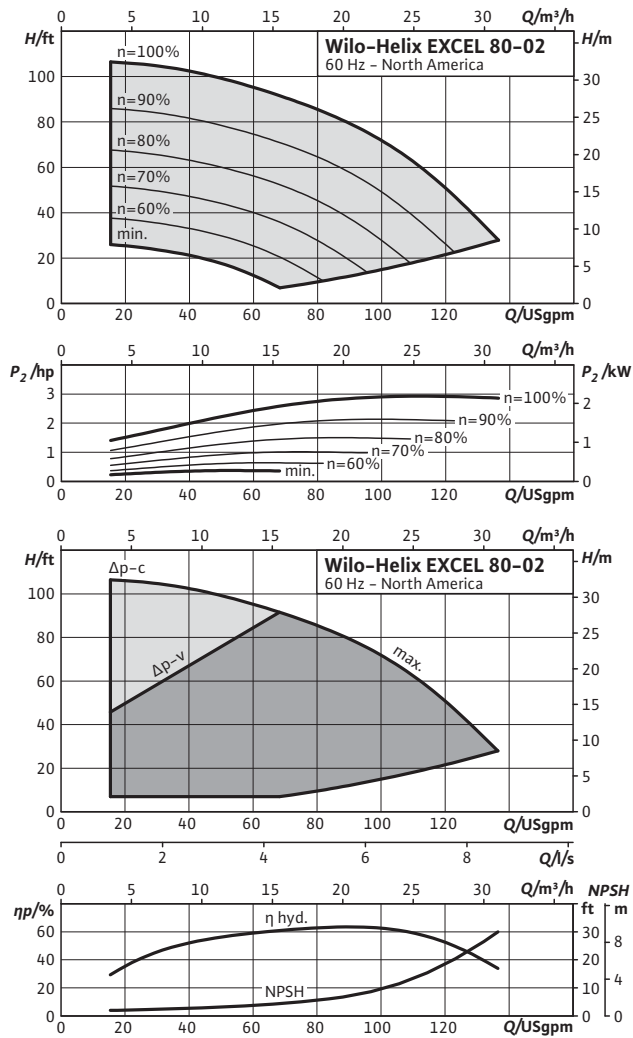
50-12	Maximum operating pressure		Dimensions								Weight approx.	
			p_{max}		H		$H2$		ϕM			
	psi	bar	in	mm	in	mm	in	mm	in	mm	kg	lbs
Helix EXCEL 50-12	362.6	25	57 ¹ / ₂	1460	40 ⁷ / ₁₆	1027	9 ³ / ₄	248	11	280	94	207

Pressure boosting

Single pumps

Pump curves, motor data Wilo-Helix EXCEL 80..

Wilo-Helix EXCEL 80-02

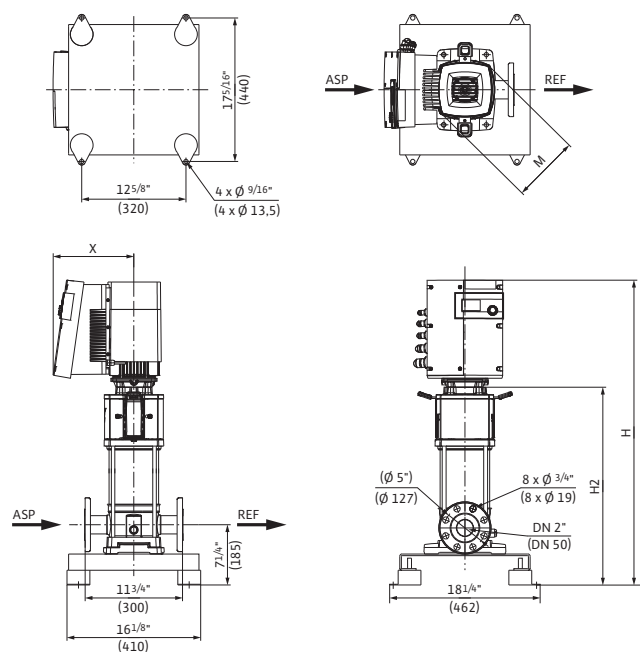


Motor data

80-02	Nominal motor power		Nominal current 3-460 V, 60 Hz	Motor efficiency
	P ₂		I	η _{m 100%}
	kW	hp	A	%
Helix EXCEL 80-02	2.20	3.0	4.4	93.0

Dimensions, weights Wilo-Helix EXCEL 80..

Dimension drawing



Dimensions, weights

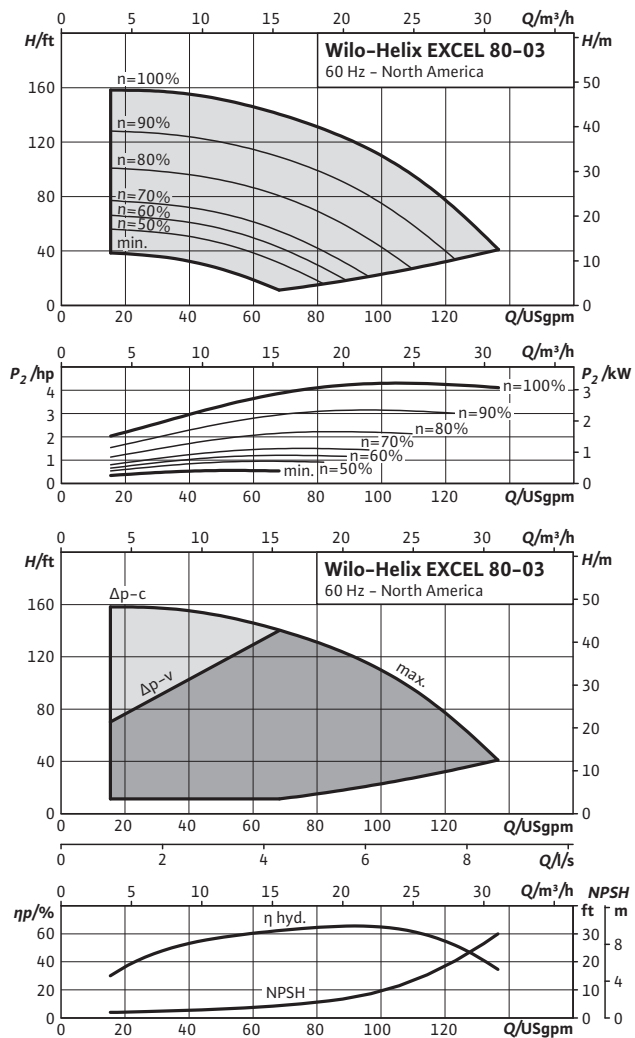
80-02	Maximum operating pressure		Dimensions								Weight approx.	
			p_{max}		H		$H2$		ϕM			
	psi	bar	in	mm	in	mm	in	mm	in	mm	kg	lbs
Helix EXCEL 80-02	232.1	16	34 ¹³ / ₁₆	885	21 ¹⁵ / ₁₆	557	8 ¹ / ₈	206	9 ³ / ₄	248	56	123

Pressure boosting

Single pumps

Pump curves, motor data Wilo-Helix EXCEL 80..

Wilo-Helix EXCEL 80-03

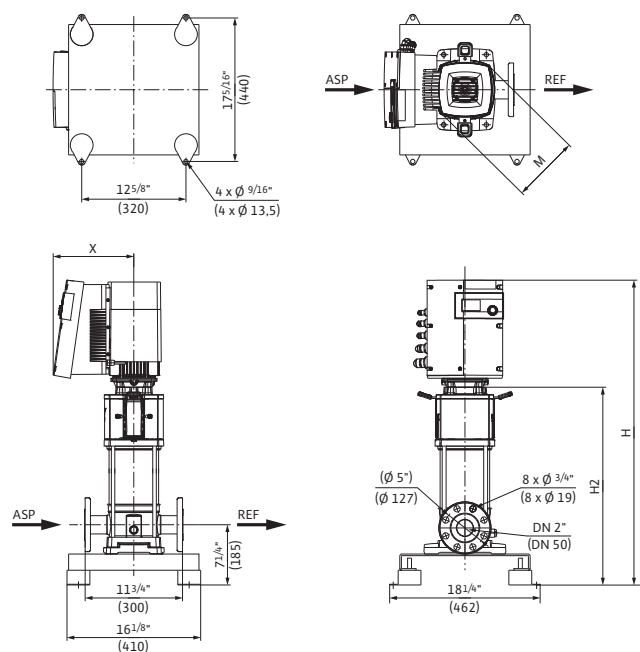


Motor data

80-03	Nominal motor power		Nominal current 3-460 V, 60 Hz	Motor efficiency
	P_2		I	$\eta_{m 100\%}$
	kW	hp	A	%
Helix EXCEL 80-03	3.20	4.3	6	93.0

Dimensions, weights Wilo-Helix EXCEL 80..

Dimension drawing



Dimensions, weights

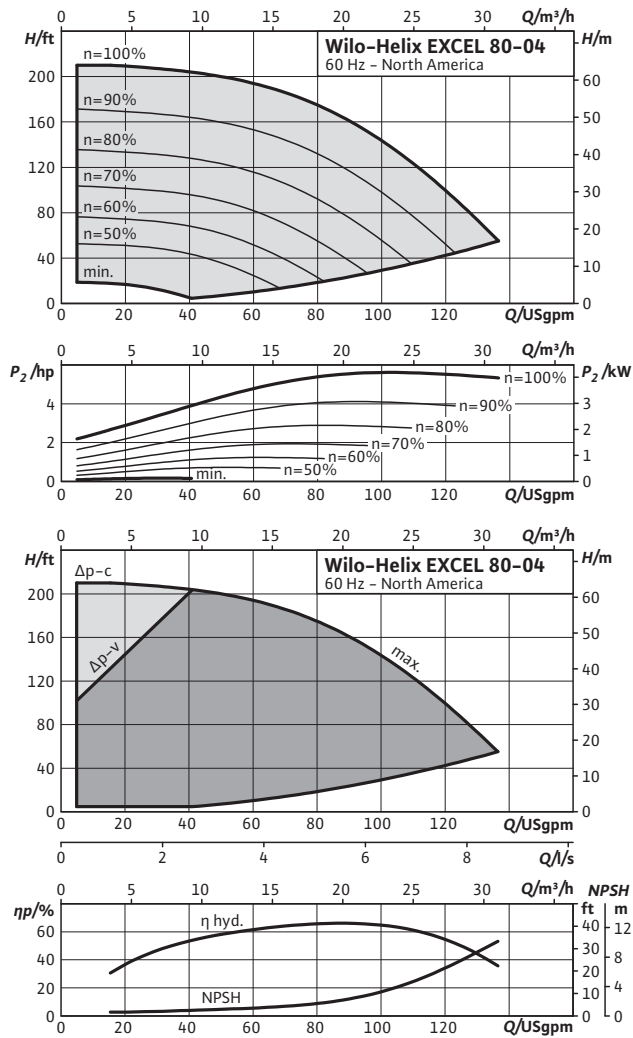
80-03	Maximum operating pressure		Dimensions								Weight approx.	
			p_{max}		H		$H2$		ϕM			
	psi	bar	in	mm	in	mm	in	mm	in	mm	kg	lbs
Helix EXCEL 80-03	232.1	16	36 ¹³ / ₁₆	935	23 ⁷ / ₈	607	8 ¹ / ₈	206	9 ³ / ₄	248	57	126

Pressure boosting

Single pumps

Pump curves, motor data Wilo-Helix EXCEL 80..

Wilo-Helix EXCEL 80-04

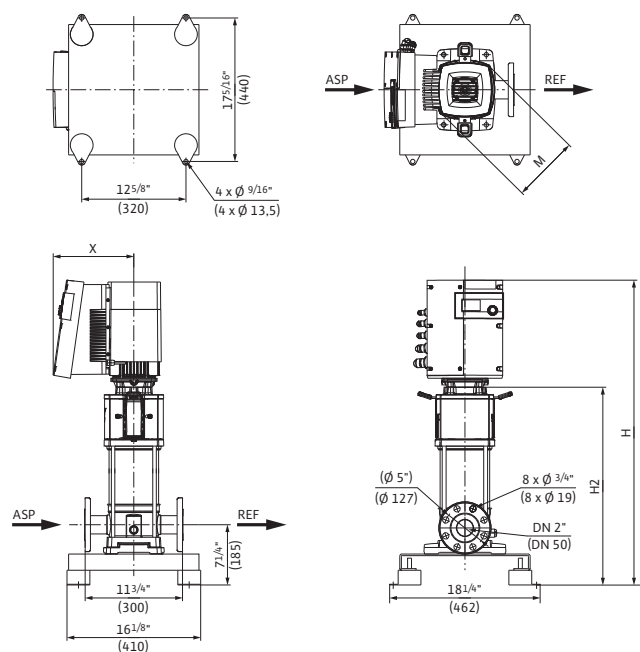


Motor data

80-04	Nominal motor power		Nominal current 3-460 V, 60 Hz	Motor efficiency
	P_2			
	kW	hp	A	%
Helix EXCEL 80-04	4.20	5.6	6.5	95.8

Dimensions, weights Wilo-Helix EXCEL 80..

Dimension drawing



Dimensions, weights

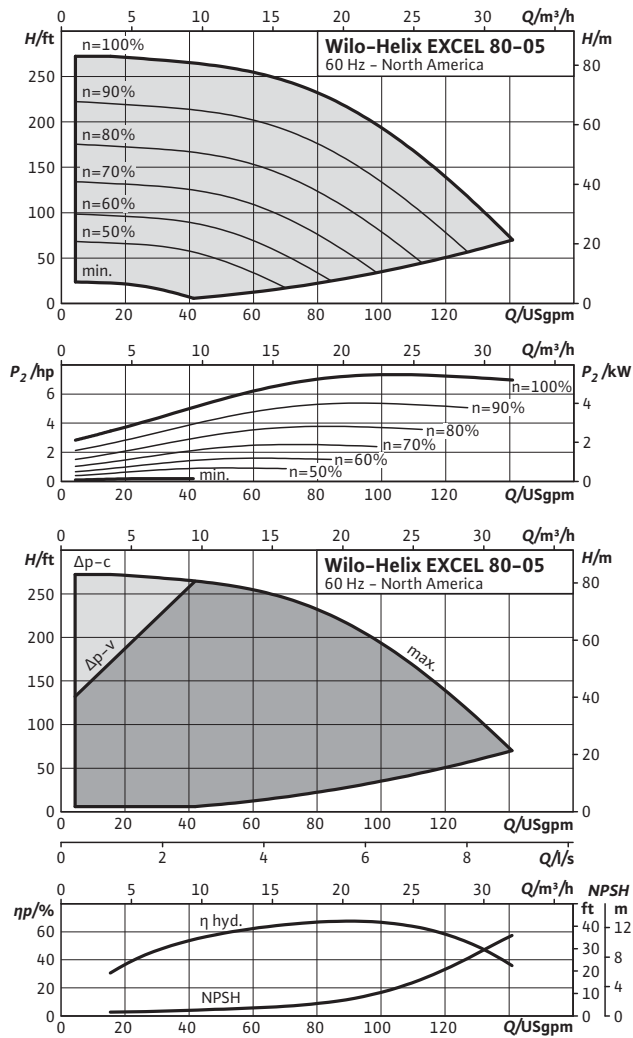
80-04	Maximum operating pressure		Dimensions								Weight approx.	
			H		$H2$		$\varnothing M$		X			
	psi	bar	in	mm	in	mm	in	mm	in	mm	kg	lbs
Helix EXCEL 80-04	232.1	16	47 ¹ / ₈	1197	31	787	8 ³ / ₄	223	10 ⁹ / ₁₆	268	71	157

Pressure boosting

Single pumps

Pump curves, motor data Wilo-Helix EXCEL 80..

Wilo-Helix EXCEL 80-05

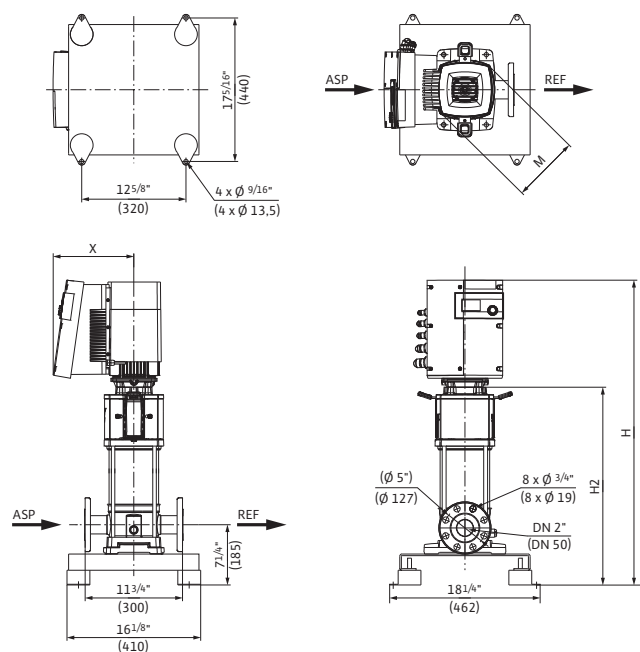


Motor data

80-05	Nominal motor power		Nominal current 3-460 V, 60 Hz	Motor efficiency
	P ₂			
	kW	hp	A	%
Helix EXCEL 80-05	5.50	7.4	8.2	95.8

Dimensions, weights Wilo-Helix EXCEL 80..

Dimension drawing



Dimensions, weights

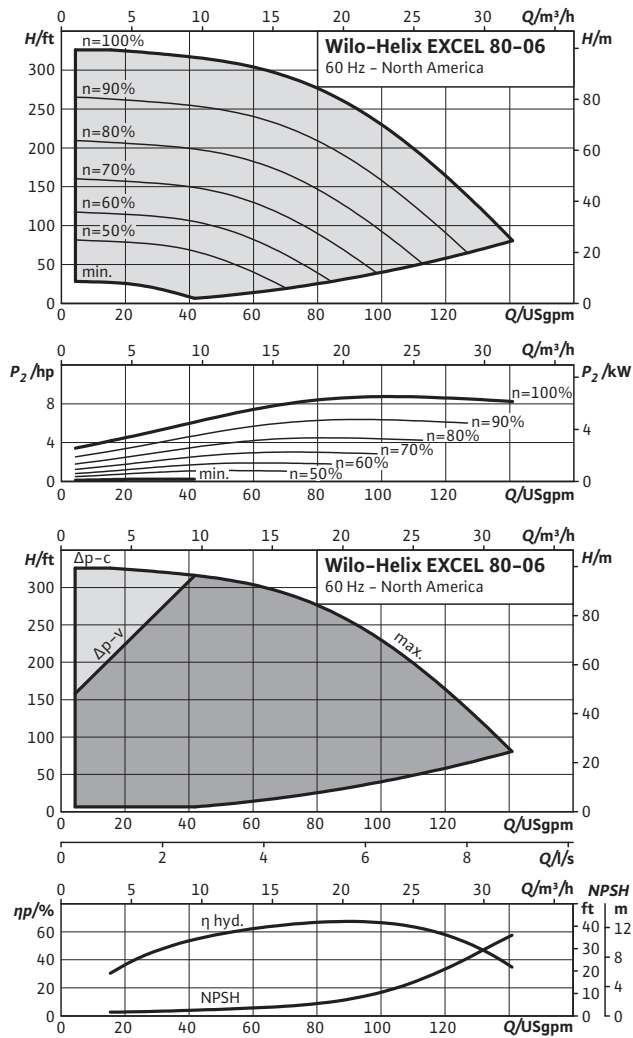
80-05	Maximum operating pressure		Dimensions								Weight approx.	
			H		$H2$		$\varnothing M$		X			
	psi	bar	in	mm	in	mm	in	mm	in	mm	kg	lbs
Helix EXCEL 80-05	232.1	16	49 ¹ / ₈	1247	32 ¹⁵ / ₁₆	837	8 ³ / ₄	223	10 ⁹ / ₁₆	268	85	187

Pressure boosting

Single pumps

Pump curves, motor data Wilo-Helix EXCEL 80..

Wilo-Helix EXCEL 80-06

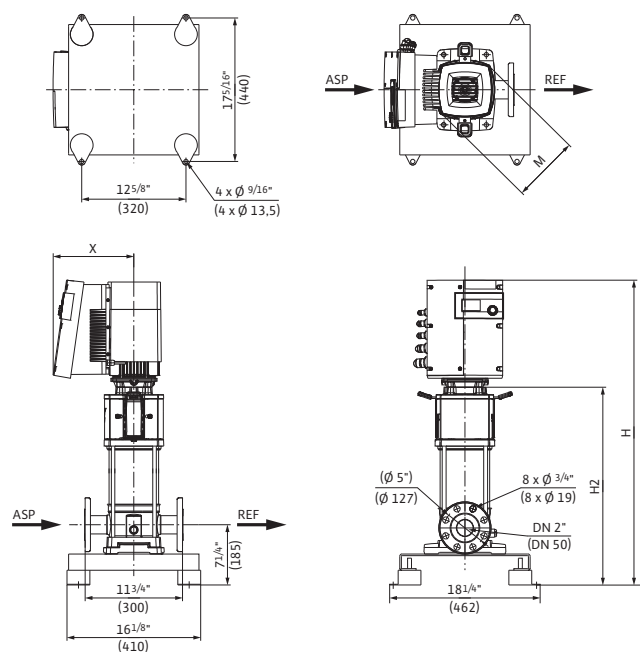


Motor data

80-06	Nominal motor power		Nominal current 3-460 V, 60 Hz	Motor efficiency
	P ₂			
	kW	hp	A	%
Helix EXCEL 80-06	6.50	8.7	9.7	96.5

Dimensions, weights Wilo-Helix EXCEL 80..

Dimension drawing



Dimensions, weights

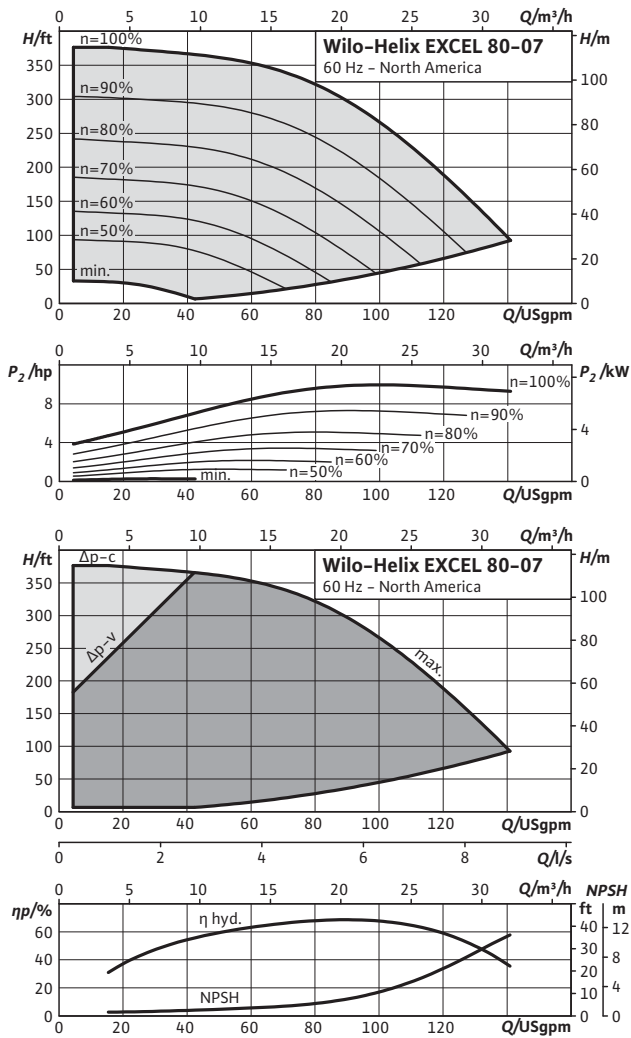
80-06	Maximum operating pressure		Dimensions								Weight approx.	
			p_{max}		H		$H2$		ϕM			
	psi	bar	in	mm	in	mm	in	mm	in	mm	kg	lbs
Helix EXCEL 80-06	232.1	16	51 ¹⁵ / ₁₆	1320	34 ¹⁵ / ₁₆	887	9 ³ / ₄	248	11	280	92	203

Pressure boosting

Single pumps

Pump curves, motor data Wilo-Helix EXCEL 80..

Wilo-Helix EXCEL 80-07

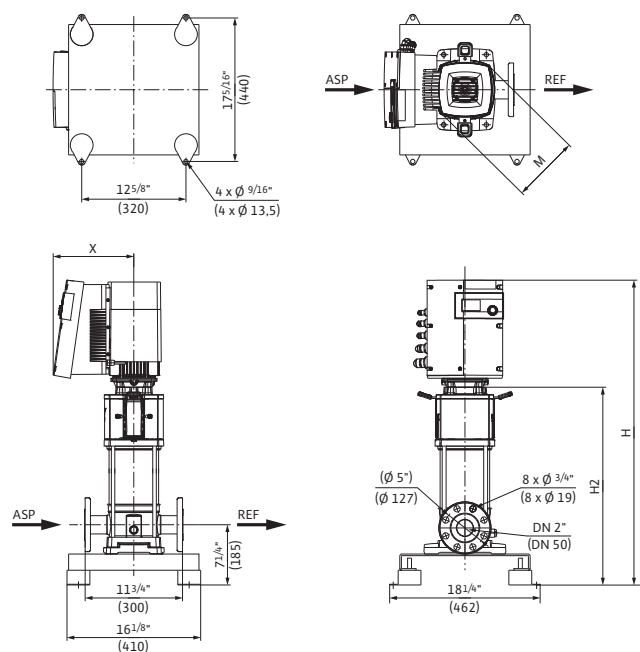


Motor data

80-07	Nominal motor power		Nominal current 3-460 V, 60 Hz	Motor efficiency
	P ₂		I	η _{m 100%}
	kW	hp	A	%
Helix EXCEL 80-07	7.50	10.1	10.9	96.4

Dimensions, weights Wilo-Helix EXCEL 80..

Dimension drawing



Dimensions, weights

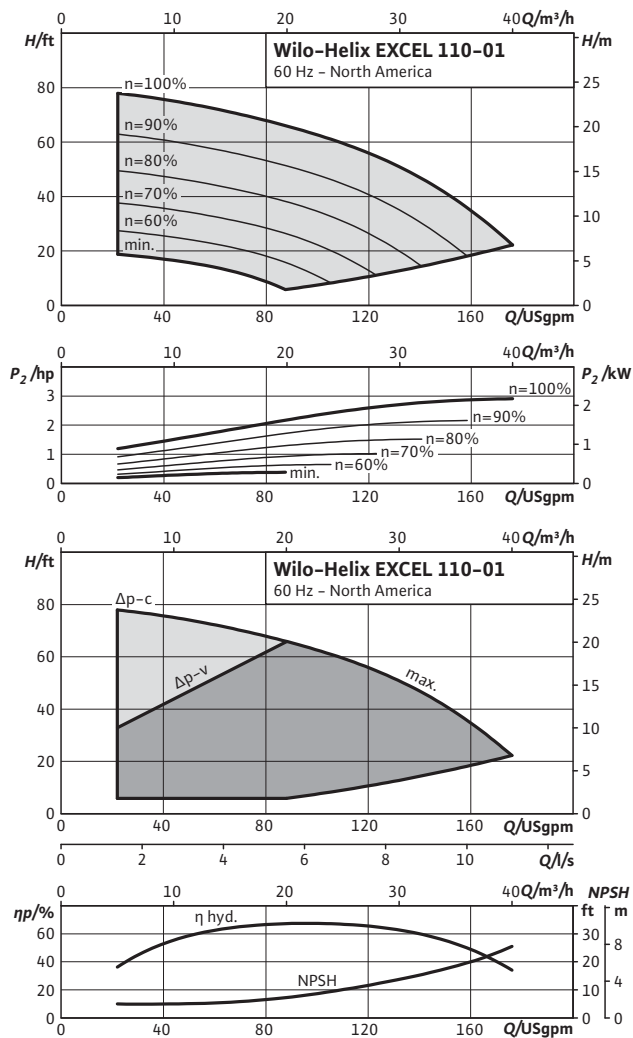
80-07	Maximum operating pressure		Dimensions								Weight approx.	
			p_{max}		H		$H2$		ϕM			
	psi	bar	in	mm	in	mm	in	mm	in	mm	kg	lbs
Helix EXCEL 80-07	232.1	16	53 ¹⁵ / ₁₆	1370	36 ⁷ / ₈	937	9 ³ / ₄	248	11	280	93	205

Pressure boosting

Single pumps

Pump curves, motor data Wilo-Helix EXCEL 110..

Wilo-Helix EXCEL 110-01

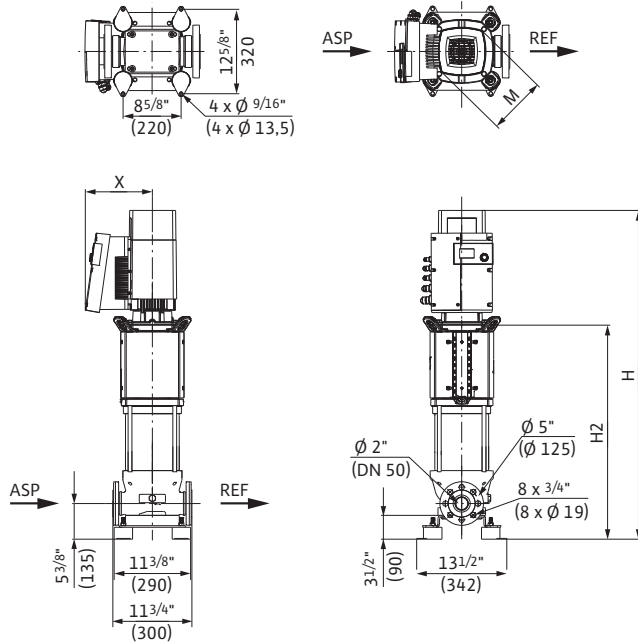


Motor data

110-01	Nominal motor power		Nominal current 3-460 V, 60 Hz	Motor efficiency
	P_2		I	$\eta_{m 100\%}$
	kW	hp	A	%
Helix EXCEL 110-01	2.20	3.0	4.4	93.0

Dimensions, weights Wilo-Helix EXCEL 110..

Dimension drawing



Dimensions, weights

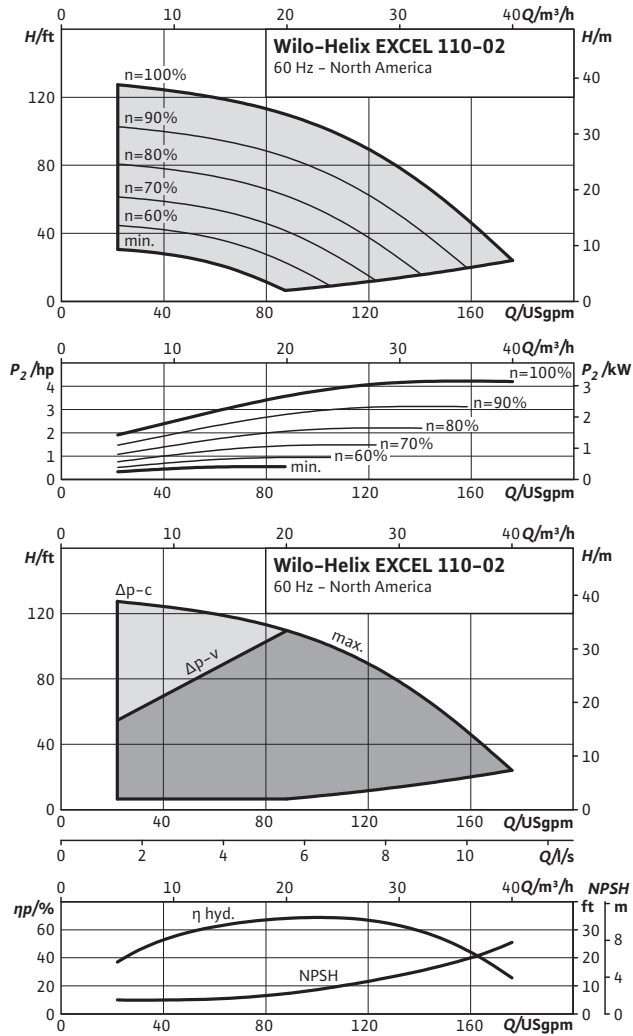
110-01	Maximum operating pressure		Dimensions								Weight approx.	
			p_{max}		H		$H2$		ϕM			
	psi	bar	in	mm	in	mm	in	mm	in	mm	kg	lbs
Helix EXCEL 110-01	232.1	16	35 ¹⁵ / ₁₆	913	23 ¹ / ₁₆	586	8 ¹ / ₈	206	9 ³ / ₄	248	68	150

Pressure boosting

Single pumps

Pump curves, motor data Wilo-Helix EXCEL 110..

Wilo-Helix EXCEL 110-02

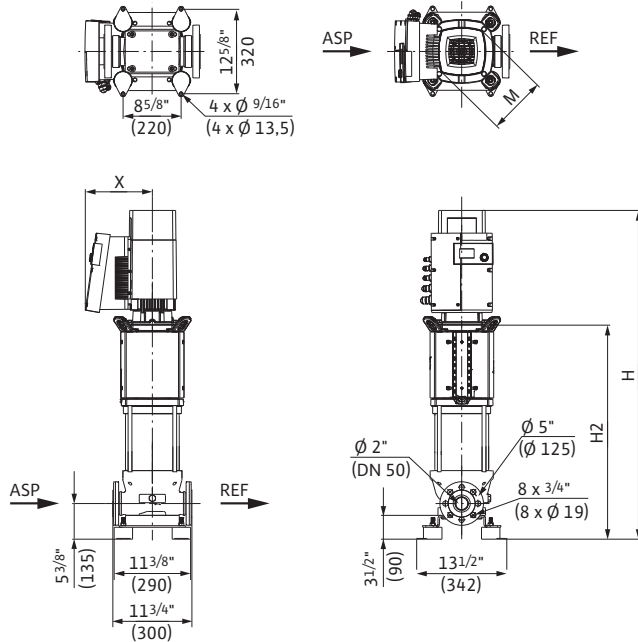


Motor data

110-02	Nominal motor power		Nominal current 3-460 V, 60 Hz	Motor efficiency
	P ₂			
	kW	hp	A	%
Helix EXCEL 110-02	3.20	4.3	6	93.0

Dimensions, weights Wilo-Helix EXCEL 110..

Dimension drawing



Dimensions, weights

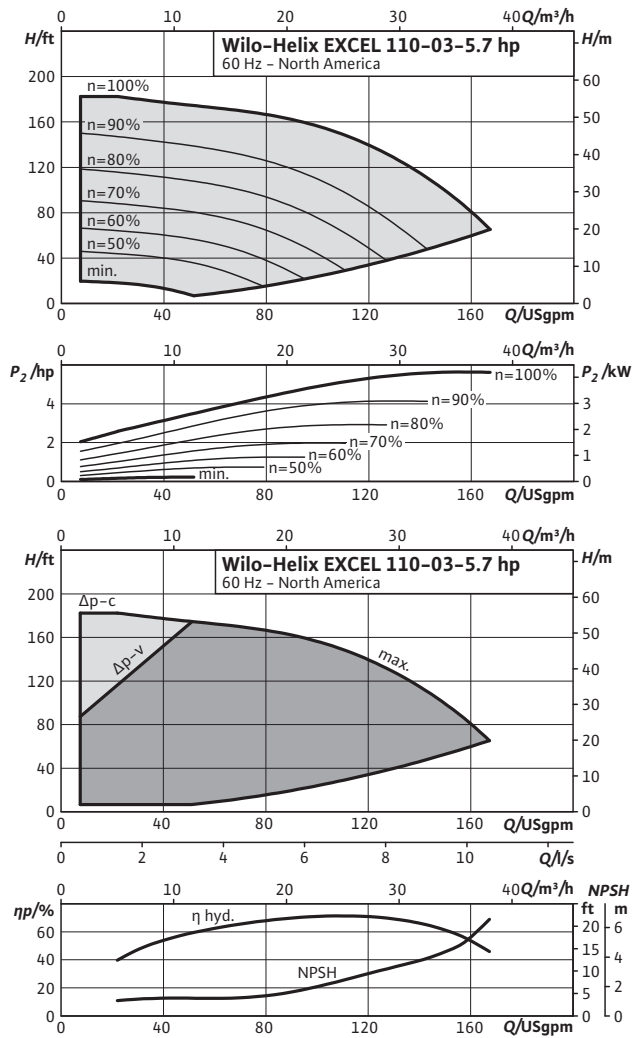
110-02	Maximum operating pressure		Dimensions								Weight approx.	
			p_{max}		H		$H2$		ϕM			
	psi	bar	in	mm	in	mm	in	mm	in	mm	kg	lbs
Helix EXCEL 110-02	232.1	16	35 ¹⁵ / ₁₆	913	23 ¹ / ₁₆	585	8 ¹ / ₈	206	9 ³ / ₄	248	77	170

Pressure boosting

Single pumps

Pump curves, motor data Wilo-Helix EXCEL 110..

Wilo-Helix EXCEL 110-03-5.7 hp

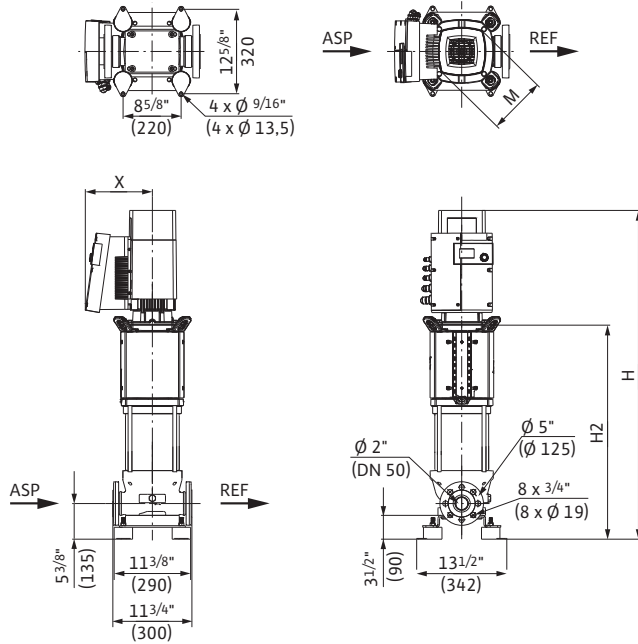


Motor data

110-03-5.7	Nominal motor power		Nominal current 3-460 V, 60 Hz	Motor efficiency
	P ₂			
	kW	hp	A	%
Helix EXCEL 110-03-5.7	4.20	5.6	6.5	95.8

Dimensions, weights Wilo-Helix EXCEL 110..

Dimension drawing



Dimensions, weights

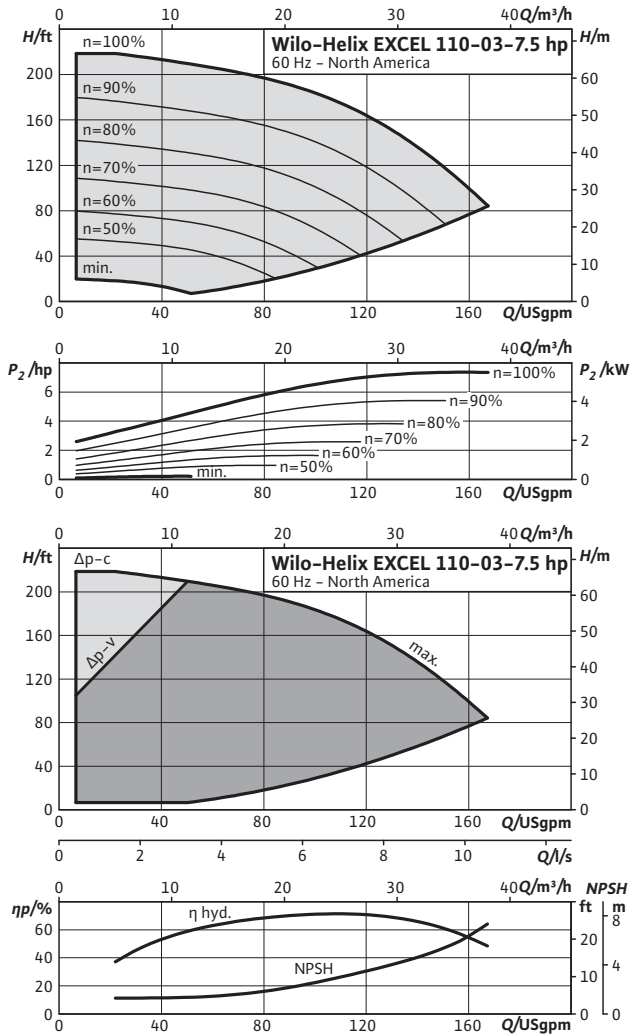
110-03-5.7	Maximum operating pressure		Dimensions								Weight approx.	
			p_{max}		H		$H2$		$\varnothing M$			
	psi	bar	in	mm	in	mm	in	mm	in	mm	kg	lbs
Helix EXCEL 110-03-5.7	232.1	16	46 ⁵ / ₁₆	1176	30 ³ / ₁₆	766	8 ³ / ₄	223	10 ⁹ / ₁₆	268	84	185

Pressure boosting

Single pumps

Pump curves, motor data Wilo-Helix EXCEL 110..

Wilo-Helix EXCEL 110-03-7.5 hp

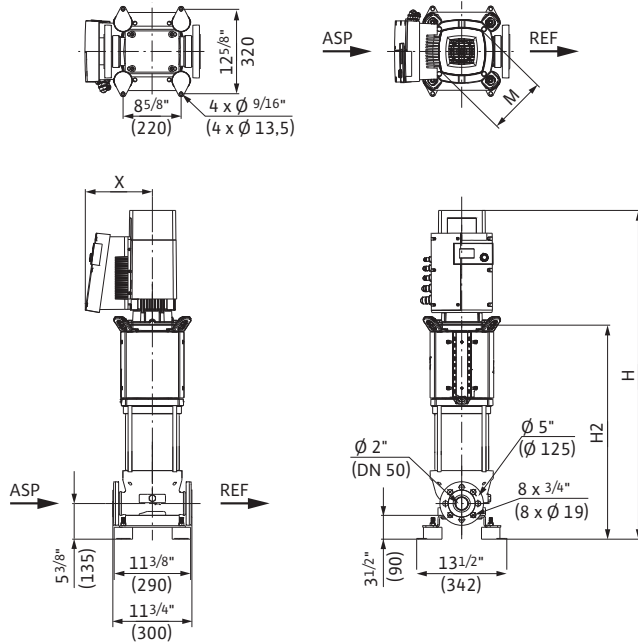


Motor data

110-03-7.5	Nominal motor power		Nominal current 3-460 V, 60 Hz	Motor efficiency η_m 100%
	P_2			
	kW	hp	A	%
Helix EXCEL 110-03-7.5	5.50	7.4	8.2	95.8

Dimensions, weights Wilo-Helix EXCEL 110..

Dimension drawing



Dimensions, weights

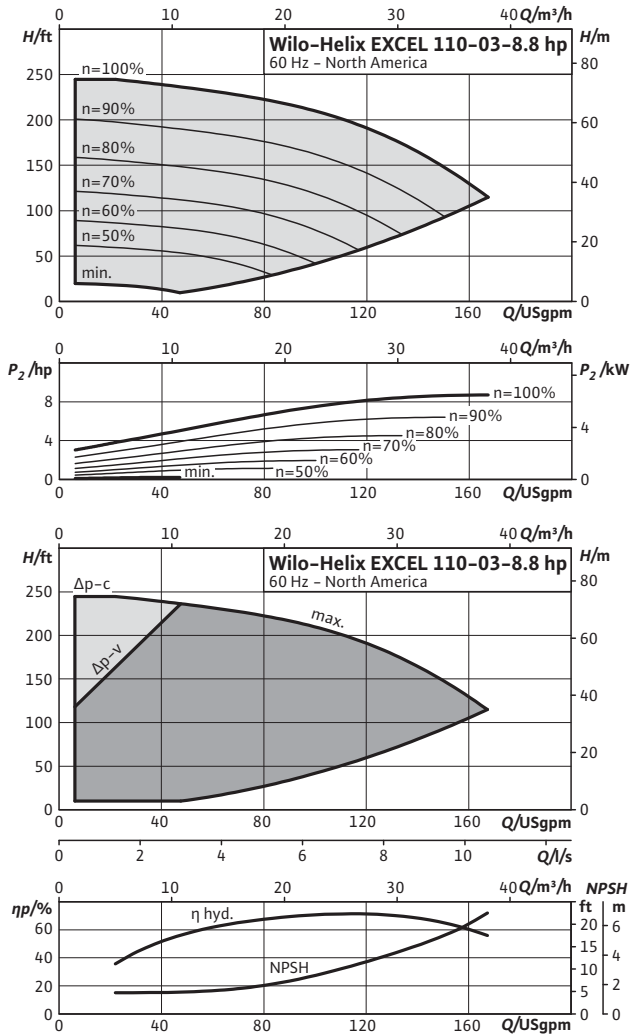
110-03-7.5	Maximum operating pressure		Dimensions								Weight approx.	
	p_{max}		H		$H2$		ϕM		X		m	
	psi	bar	in	mm	in	mm	in	mm	in	mm	kg	lbs
Helix EXCEL 110-03-7.5	232.1	16	46 ⁵ / ₁₆	1176	30 ³ / ₁₆	766	8 ³ / ₄	223	10 ⁹ / ₁₆	268	97	214

Pressure boosting

Single pumps

Pump curves, motor data Wilo-Helix EXCEL 110..

Wilo-Helix EXCEL 110-03-8.8 hp

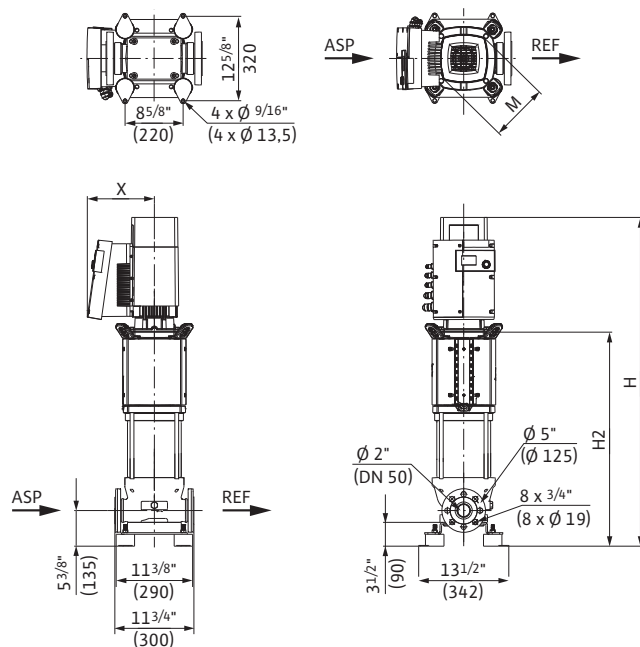


Motor data

110-03-8.8	Nominal motor power		Nominal current 3-460 V, 60 Hz	Motor efficiency
	P_2			
	kW	hp	A	%
Helix EXCEL 110-03-8.8	6.50	8.7	9.7	96.5

Dimensions, weights Wilo-Helix EXCEL 110..

Dimension drawing



Dimensions, weights

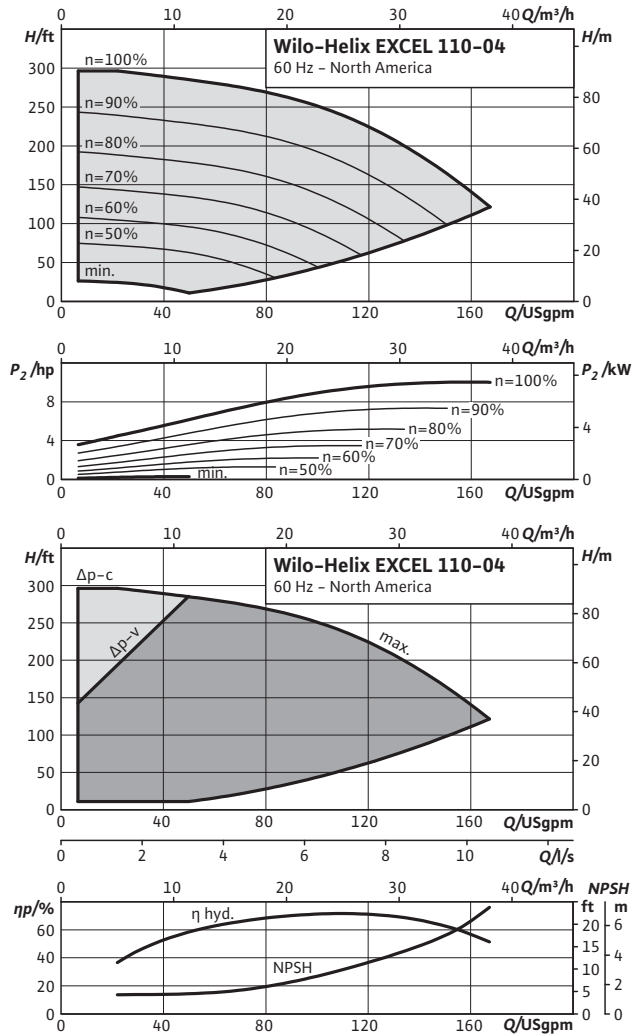
110-03-8.8	Maximum operating pressure		Dimensions								Weight approx.	
			p_{max}		H		$H2$		ϕM			
	psi	bar	in	mm	in	mm	in	mm	in	mm	kg	lbs
Helix EXCEL 110-03-8.8	232.1	16	47 ¹ / ₁₆	1195	30	762	9 ³ / ₄	248	11	280	100	220

Pressure boosting

Single pumps

Pump curves, motor data Wilo-Helix EXCEL 110..

Wilo-Helix EXCEL 110-04

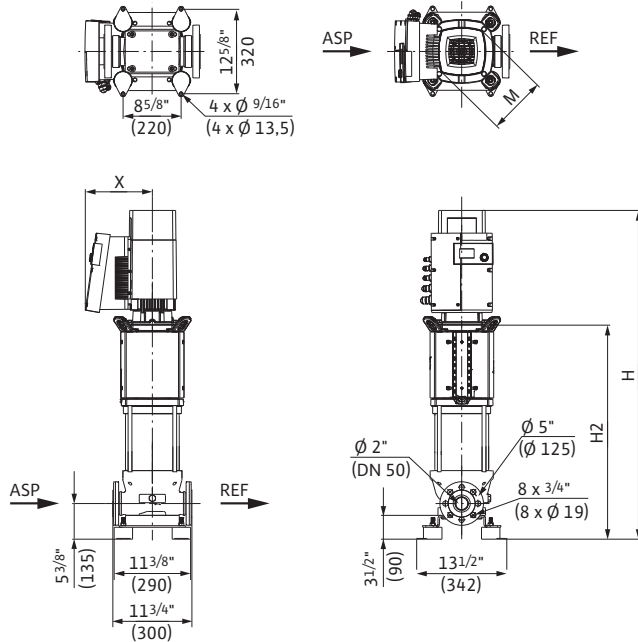


Motor data

110-04	Nominal motor power		Nominal current 3-460 V, 60 Hz	Motor efficiency
	P ₂		I	η _{m 100%}
	kW	hp	A	%
Helix EXCEL 110-04	7.50	10.1	10.9	96.4

Dimensions, weights Wilo-Helix EXCEL 110..

Dimension drawing



Dimensions, weights

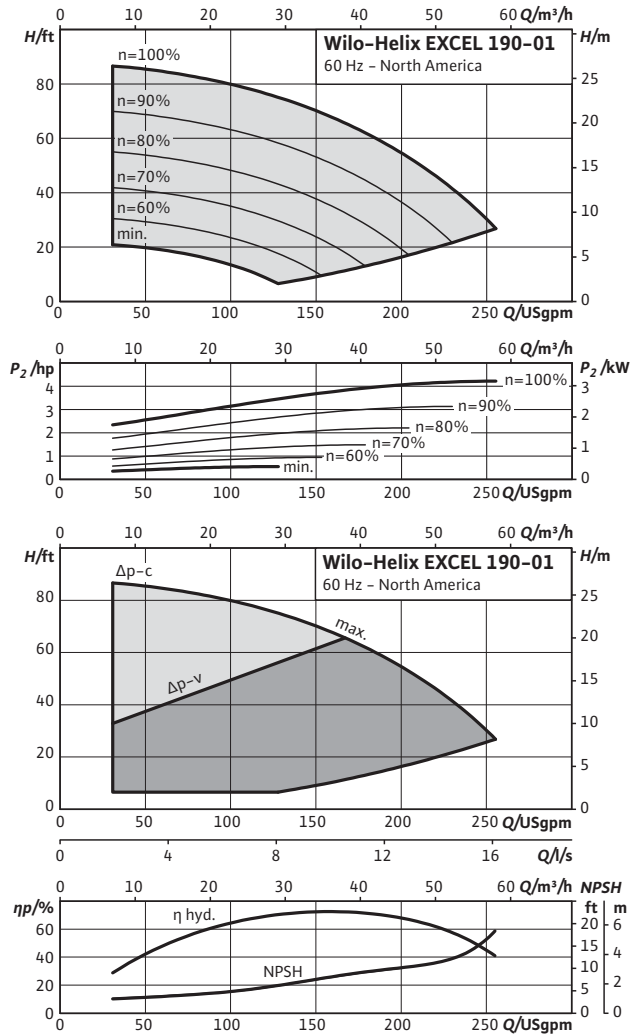
110-04	Maximum operating pressure		Dimensions								Weight approx.	
			H		$H2$		$\varnothing M$		X			
	psi	bar	in	mm	in	mm	in	mm	in	mm	kg	lbs
Helix EXCEL 110-04	232.1	16	49	1245	3 15/16	812	9 3/4	248	11	280	104	229

Pressure boosting

Single pumps

Pump curves, motor data Wilo-Helix EXCEL 190..

Wilo-Helix EXCEL 190-01

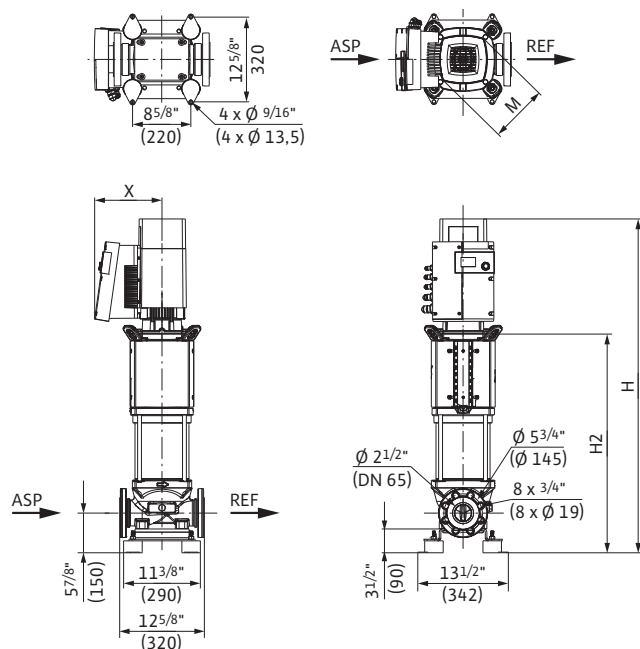


Motor data

190-01	Nominal motor power		Nominal current 3-460 V, 60 Hz	Motor efficiency
	P ₂		I	η _{m 100%}
	kW	hp	A	%
Helix EXCEL 190-01	3.20	4.3	6	93.0

Dimensions, weights Wilo-Helix EXCEL 190..

Dimension drawing



Dimensions, weights

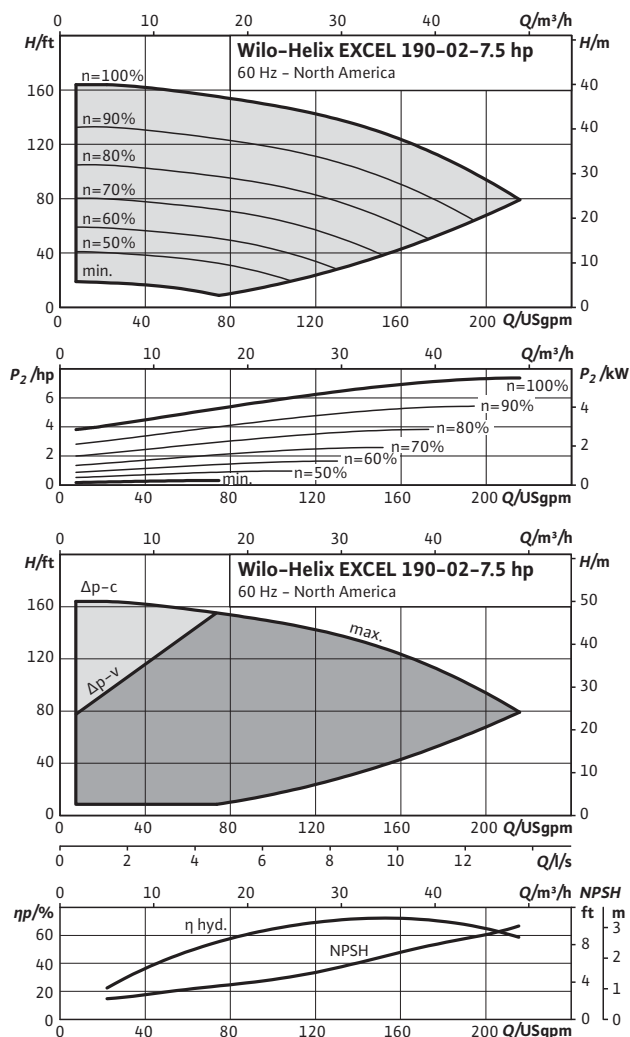
190-01	Maximum operating pressure		Dimensions								Weight approx.	
			p_{max}		H		$H2$		ϕM			
	psi	bar	in	mm	in	mm	in	mm	in	mm	kg	lbs
Helix EXCEL 190-01	232.1	16	35 ¹ / ₄	895	22 ⁵ / ₁₆	567	8 ¹ / ₈	206	9 ³ / ₄	248	76	168

Pressure boosting

Single pumps

Pump curves, motor data Wilo-Helix EXCEL 190..

Wilo-Helix EXCEL 190-02-7.5 hp

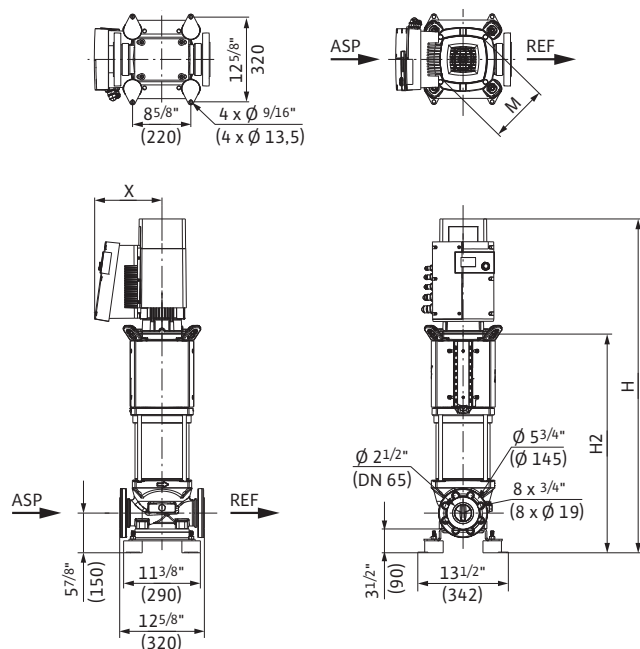


Motor data

190-02-7.5	Nominal motor power		Nominal current 3-460 V, 60 Hz	Motor efficiency
	P ₂		I	η _{m 100%}
	kW	hp	A	%
Helix EXCEL 190-02-7.5	5.50	7.4	8.2	95.8

Dimensions, weights Wilo-Helix EXCEL 190..

Dimension drawing



Dimensions, weights

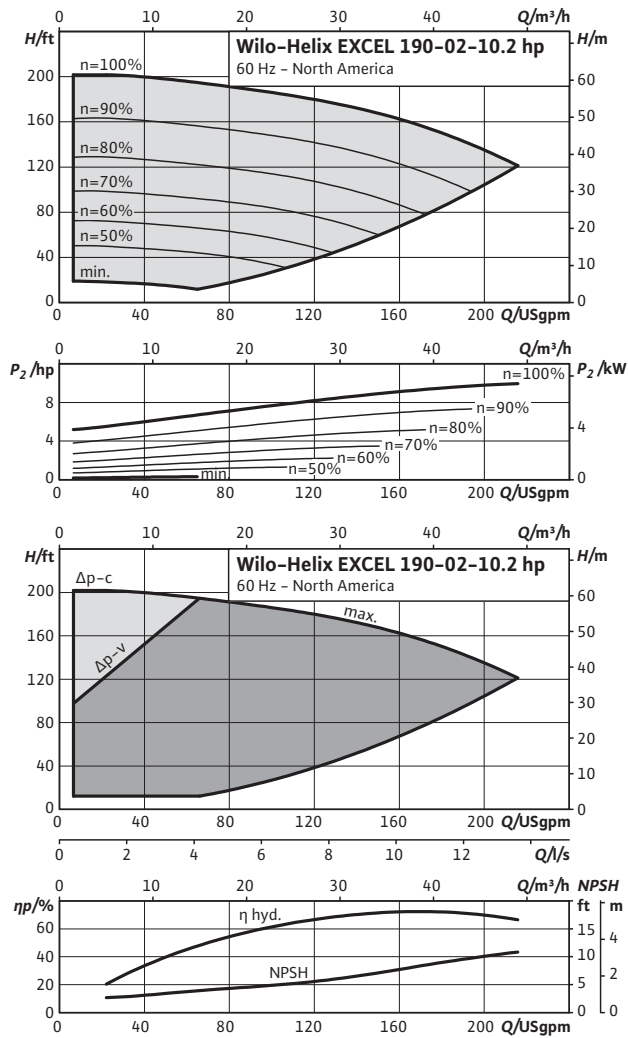
190-02-7.5	Maximum operating pressure		Dimensions								Weight approx.	
			p_{max}		H		$H2$		ϕM			
	psi	bar	in	mm	in	mm	in	mm	in	mm	kg	lbs
Helix EXCEL 190-02-7.5	232.1	16	46 ¹ / ₄	1174	30 ¹ / ₁₆	764	8 ³ / ₄	223	10 ⁹ / ₁₆	268	99	218

Pressure boosting

Single pumps

Pump curves, motor data Wilo-Helix EXCEL 190..

Wilo-Helix EXCEL 190-02-10.2 hp

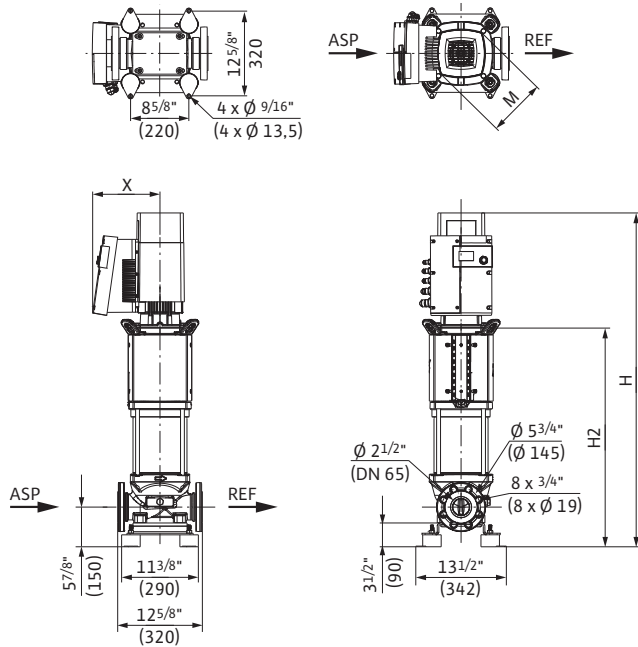


Motor data

190-02-10.2	Nominal motor power		Nominal current 3-460 V, 60 Hz	Motor efficiency
	P_2			
	kW	hp	A	%
Helix EXCEL 190-02-10.2	7.50	10.1	10.9	96.4

Dimensions, weights Wilo-Helix EXCEL 190..

Dimension drawing



Dimensions, weights

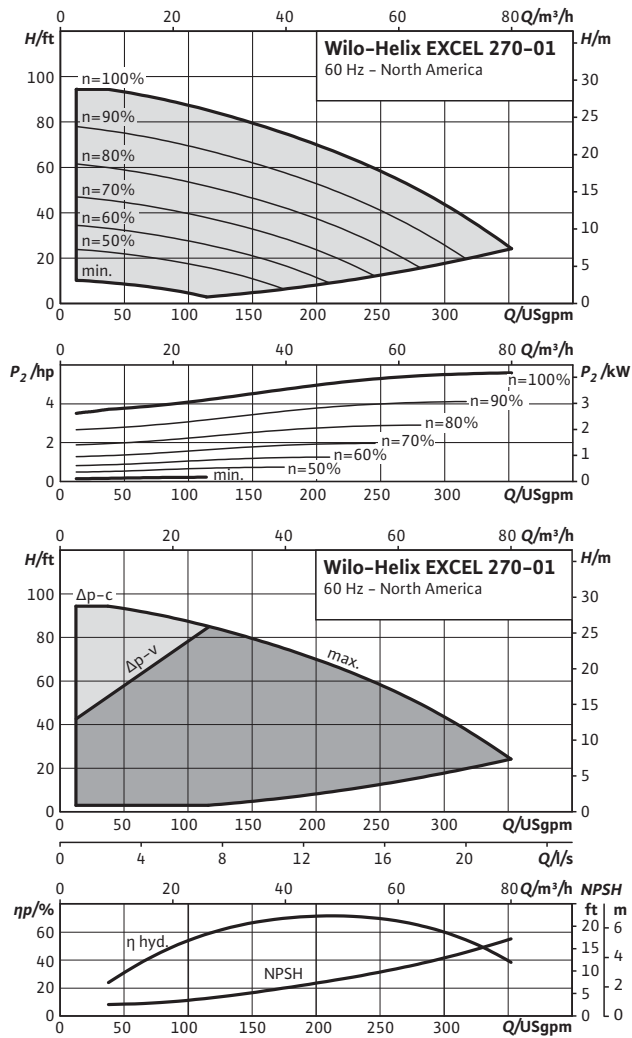
190-02-10.2	Maximum operating pressure		Dimensions								Weight approx.	
			p_{max}		H		$H2$		ϕM			
	psi	bar	in	mm	in	mm	in	mm	in	mm	kg	lbs
Helix EXCEL 190-02-10.2	232.1	16	46 ¹⁵ / ₁₆	1193	29 ¹⁵ / ₁₆	760	9 ³ / ₄	248	11	280	118	260

Pressure boosting

Single pumps

Pump curves, motor data Wilo-Helix EXCEL 270..

Wilo-Helix EXCEL 270-01

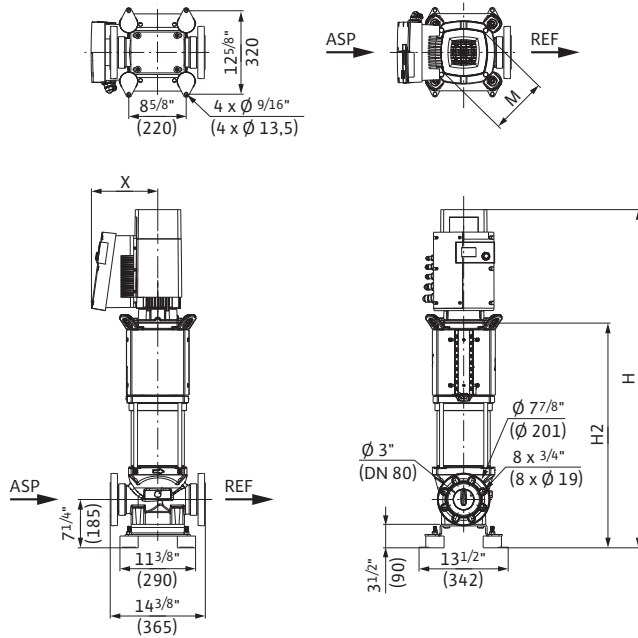


Motor data

270-01	Nominal motor power		Nominal current 3-460 V, 60 Hz	Motor efficiency
	P_2			
	kW	hp	A	%
Helix EXCEL 270-01	4.20	5.6	6.5	95.8

Dimensions, weights Wilo-Helix EXCEL 270..

Dimension drawing



Dimensions, weights

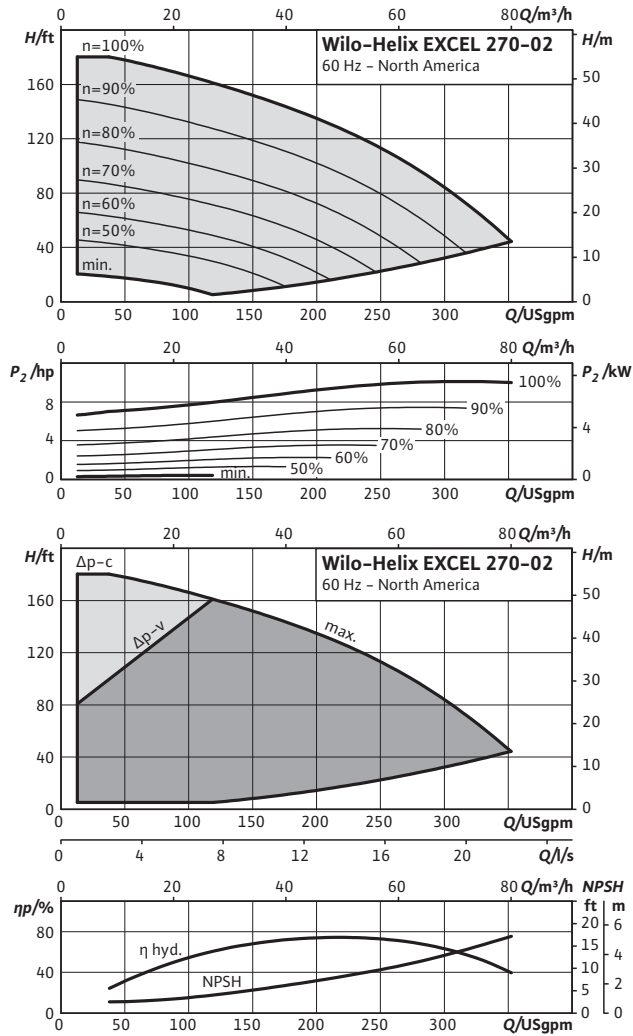
270-01	Maximum operating pressure		Dimensions								Weight approx.	
			p_{max}		H		$H2$		ϕM			
	psi	bar	in	mm	in	mm	in	mm	in	mm	kg	lbs
Helix EXCEL 270-01	232.1	16	44 ¹⁵ / ₁₆	1142	28 ¹³ / ₁₆	732	8 ³ / ₄	223	10 ⁹ / ₁₆	268	103	227

Pressure boosting

Single pumps

Pump curves, motor data Wilo-Helix EXCEL 270..

Wilo-Helix EXCEL 270-02

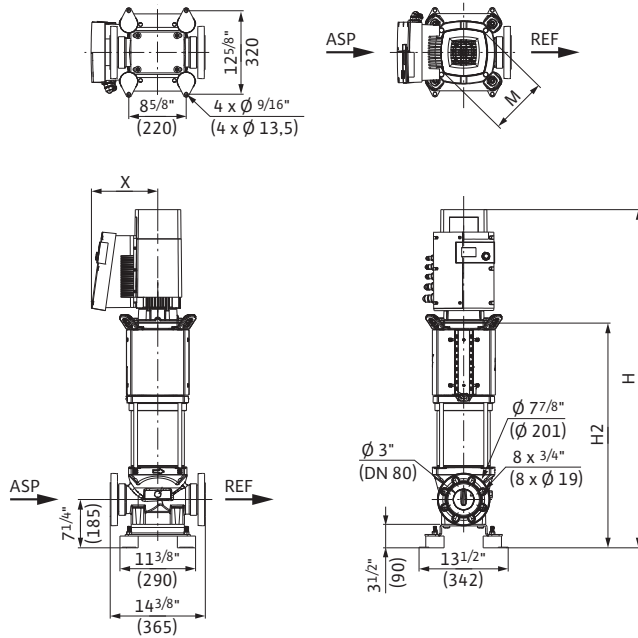


Motor data

270-02	Nominal motor power		Nominal current 3-460 V, 60 Hz	Motor efficiency
	P_2		I	$\eta_{m 100\%}$
	kW	hp	A	%
Helix EXCEL 270-02	7.50	10.1	10.9	96.4

Dimensions, weights Wilo-Helix EXCEL 270..

Dimension drawing



Dimensions, weights

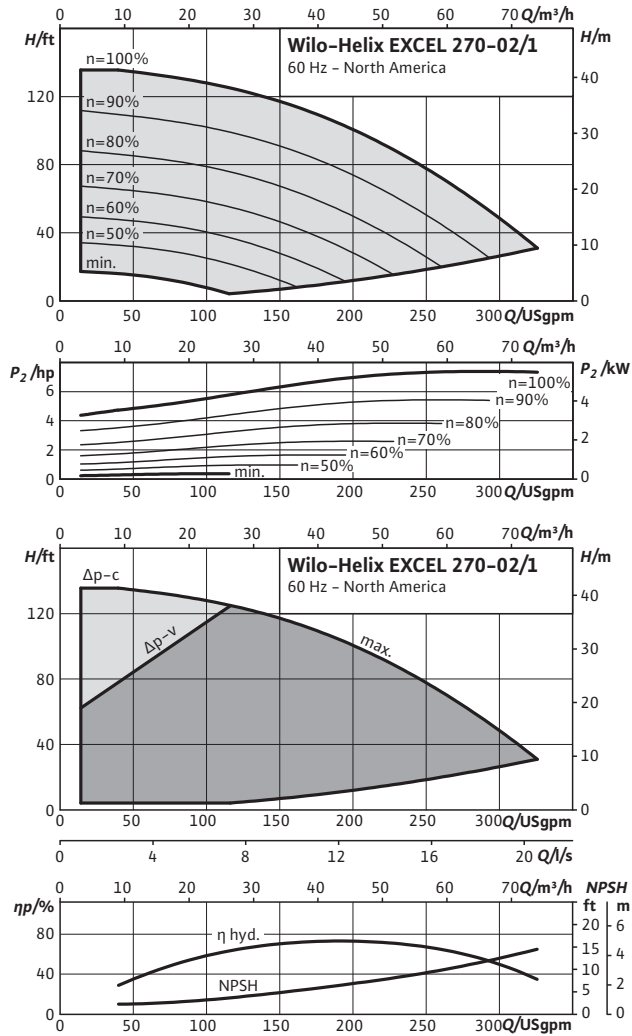
270-02	Maximum operating pressure		Dimensions								Weight approx.	
			H		$H2$		ϕM		X			
	psi	bar	in	mm	in	mm	in	mm	in	mm	kg	lbs
Helix EXCEL 270-02	232.1	16	49 ⁵ / ₈	1261	32 ⁵ / ₈	828	9 ³ / ₄	248	11	280	128	282

Pressure boosting

Single pumps

Pump curves, motor data Wilo-Helix EXCEL 270..

Wilo-Helix EXCEL 270-02/1

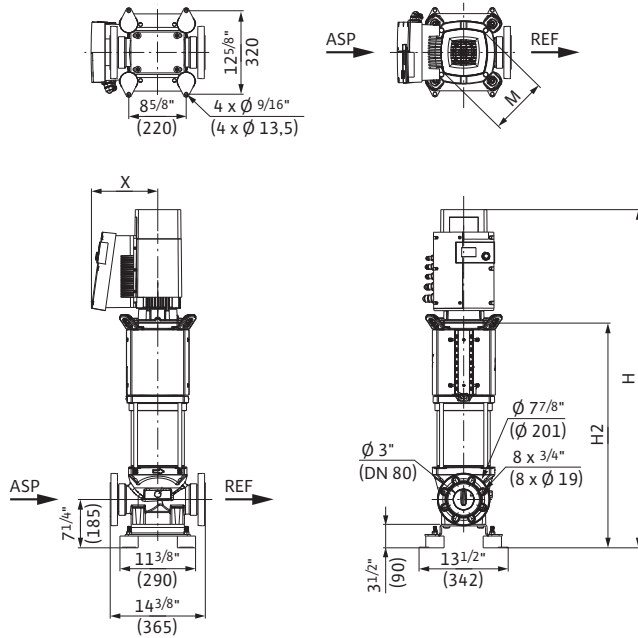


Motor data

270-02/1	Nominal motor power		Nominal current 3-460 V, 60 Hz	Motor efficiency
	P ₂			
	kW	hp	A	%
Helix EXCEL 270-02/1	5.50	7.4	8.2	95.8

Dimensions, weights Wilo-Helix EXCEL 270..

Dimension drawing



Dimensions, weights

270-02/1	Maximum operating pressure		Dimensions								Weight approx.	
			H		$H2$		ϕM		X			
	psi	bar	in	mm	in	mm	in	mm	in	mm	kg	lbs
Helix EXCEL 270-02/1	232.1	16	48 ⁷ / ₈	1242	32 ³ / ₄	832	8 ³ / ₄	223	10 ⁹ / ₁₆	268	121	267