

**Wilo 6", 7", 8", 10" Submersibles**  
Data Booklet





## Wilo-TWI, SPI, TWU

All NSF Certified



Drinking Water  
NSF / ANSI 61



Certified to  
NSF/ANSI 61 & 372

### SPI Series

Dimensional Drawing	4
---------------------	---

### Wilo-SPI 6 (6" Stainless Steel Submersible Well Pumps)

General Material Data	5
-----------------------	---

#### Curves

50 GPM	6
90 GPM	9
150 GPM	12
180 GPM	14
230 GPM	16
300 GPM	17

#### Weights & Dimensions

50 GPM	20
90 GPM	22
150 GPM	24
180 GPM	26
230 GPM	27
300 GPM	28

6" Motor Data	29
---------------	----

### Wilo-SPI 7 (7" Stainless Steel Submersible Well Pumps)

General Material Data	31
-----------------------	----

#### Curves

400 GPM	32
500 GPM	33
550 GPM	34

#### Weights & Dimensions

400 GPM	35
500 GPM	36
550 GPM	37

### Wilo-SPI 8 (8" Stainless Steel Submersible Well Pumps)

General Material Data	38
-----------------------	----

#### Curves

550 GPM	39
650 GPM	40
800 GPM	41

#### Weights & Dimensions

550 GPM	42
650 GPM	43
800 GPM	44

### Wilo-SPI 10 (10" Stainless Steel Submersible Well Pumps)

General Material Data	45
-----------------------	----

#### Curves

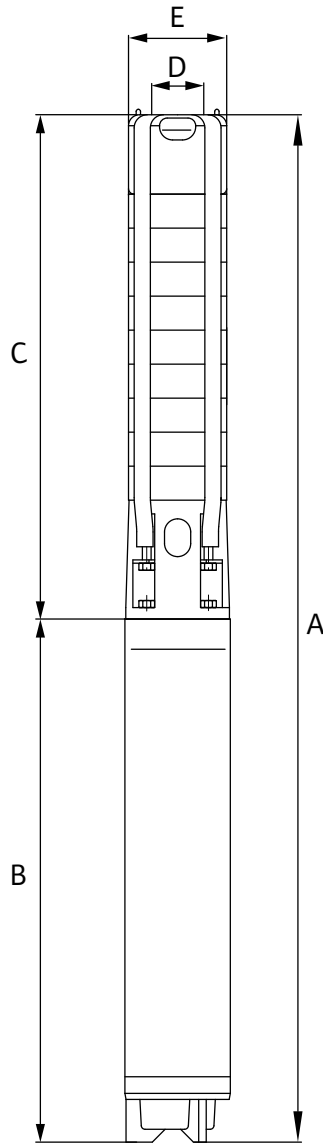
1200 GPM	46
----------	----

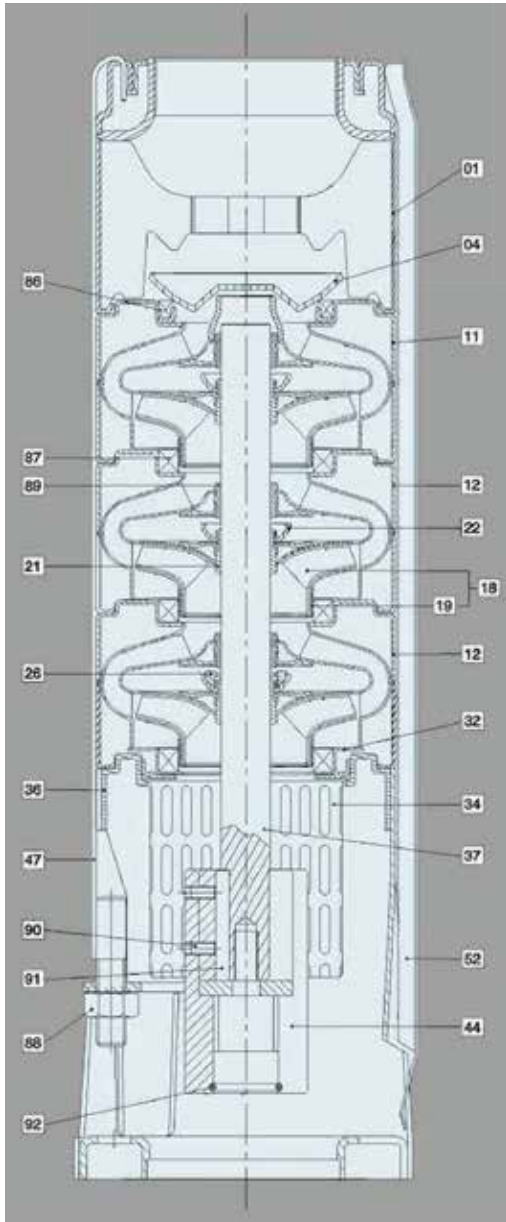
#### Weights & Dimensions

1200 GPM	47
650 GPM	

7", 8", 10" Motor Data	48
------------------------	----

<b>Wire Sizing (6", 7", 8", 10")</b>	<b>50</b>
--------------------------------------	-----------

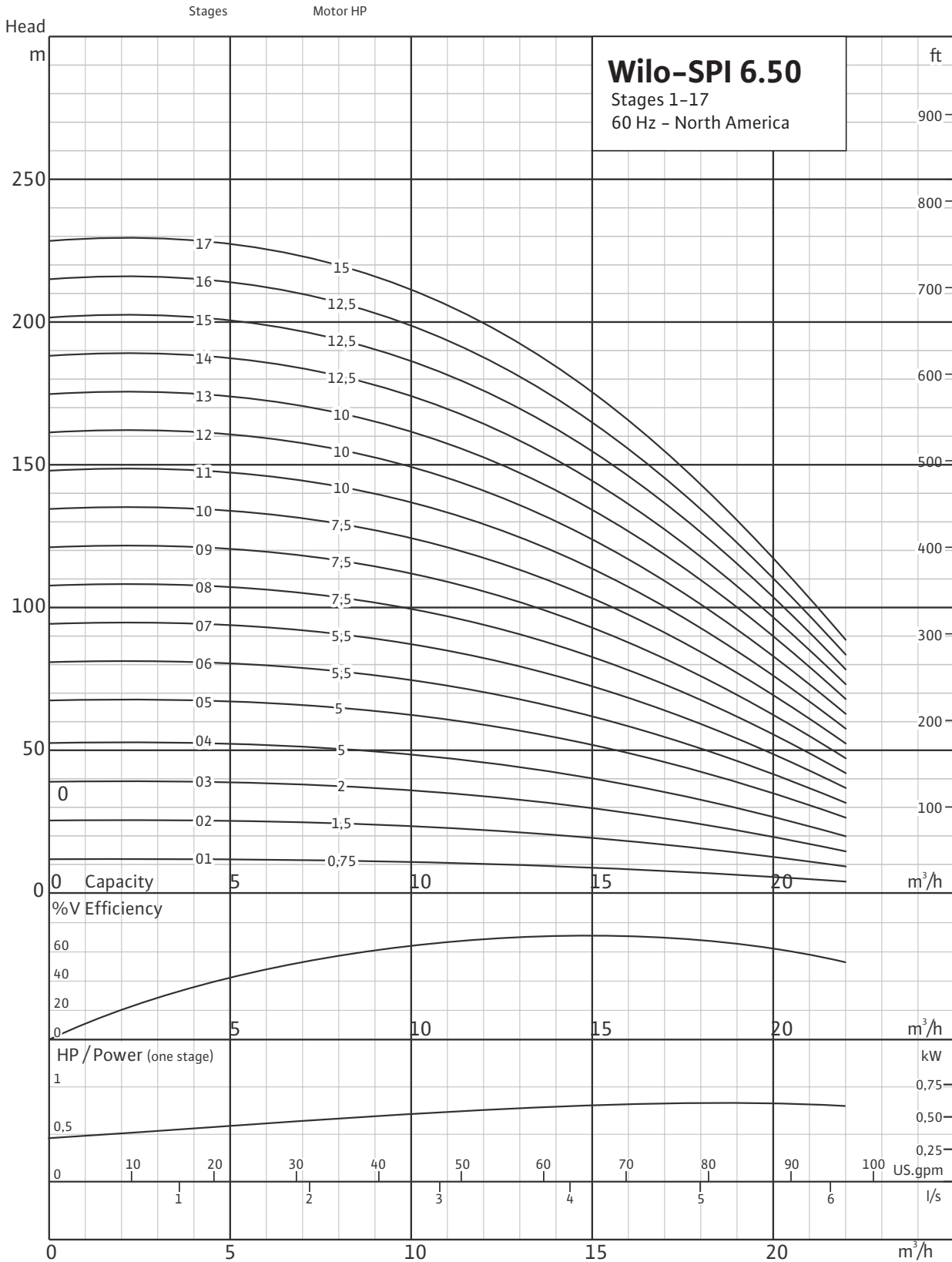




Pos.	Components	Material	Standard
01	Discharge	Stainless Steel	304
04	Valve Cone	Stainless Steel	304
11	Top Diffuser	Stainless Steel	304
12	Diffuser	Stainless Steel	304
18	Impeller	Stainless Steel	304
19	Ring of Impeller	Stainless Steel	304
21	Split Cone	Stainless Steel	304
22	Split Cone Nut	Stainless Steel	304
26	Spacing Washer For Stop Ring	Carbon/Graphite/PTFE	
32	Neck Ring Retainer	Stainless Steel	304
34	Strainer	Stainless Steel	304
36	Suction Interconnector	Stainless Steel	304
37	Pump Shaft	Stainless Steel	431
44	Coupling	Stainless Steel	304
47	Strap	Stainless Steel	304
52	Cable Guard	Stainless Steel	304
86	Valve Seat	SUS304+NBR	
87	Neck Ring	SUS304+NBR	
88	Nut	Stainless Steel	304
89	Bearing	NBR	
90	Screw	Stainless Steel	304
91	Key	Stainless Steel	304
92	O-Ring	NBR	

\*AISI 316 Stainless Steel Pumps are available on request.

Stages 1-17

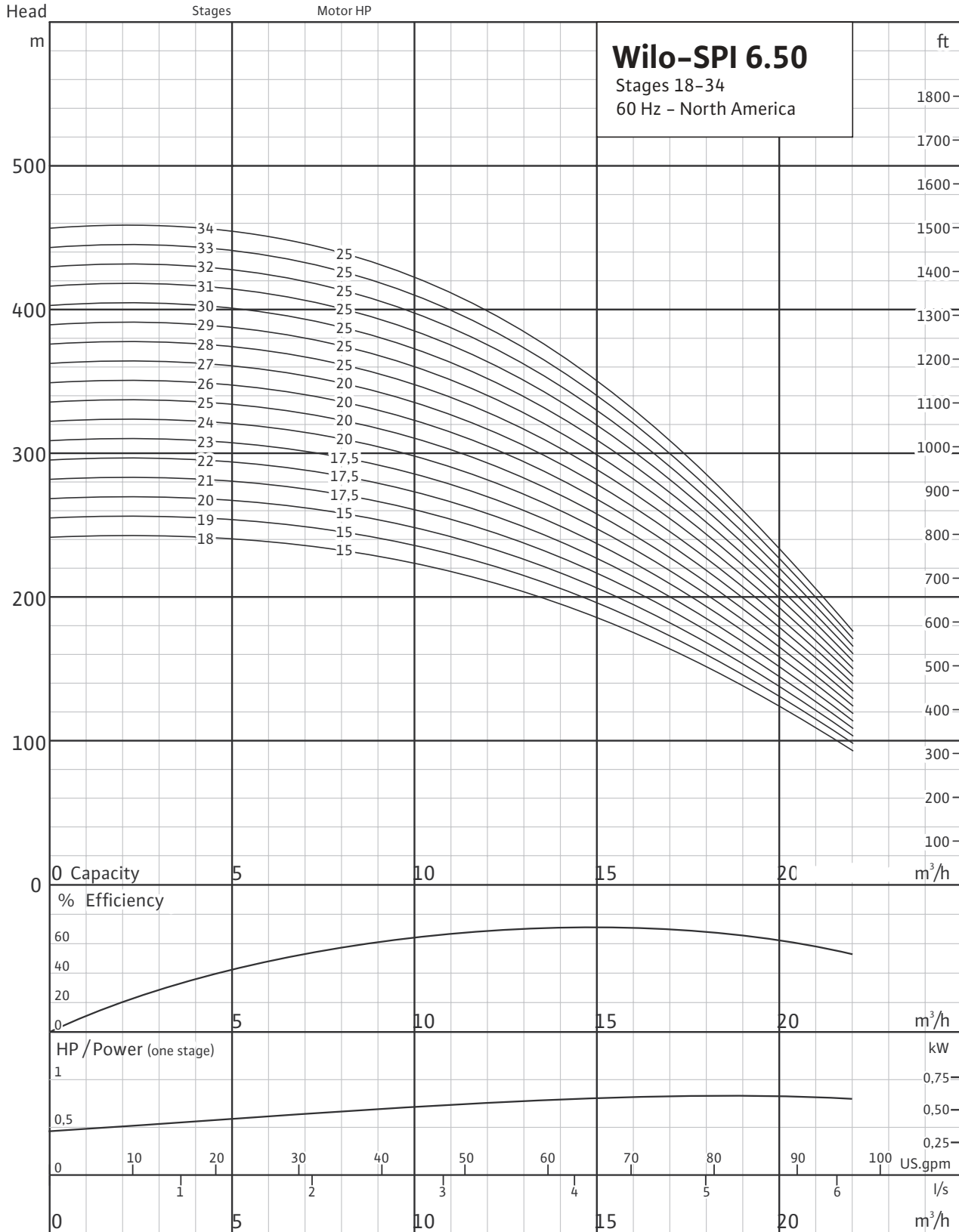


# Wilo-SPI 6.50

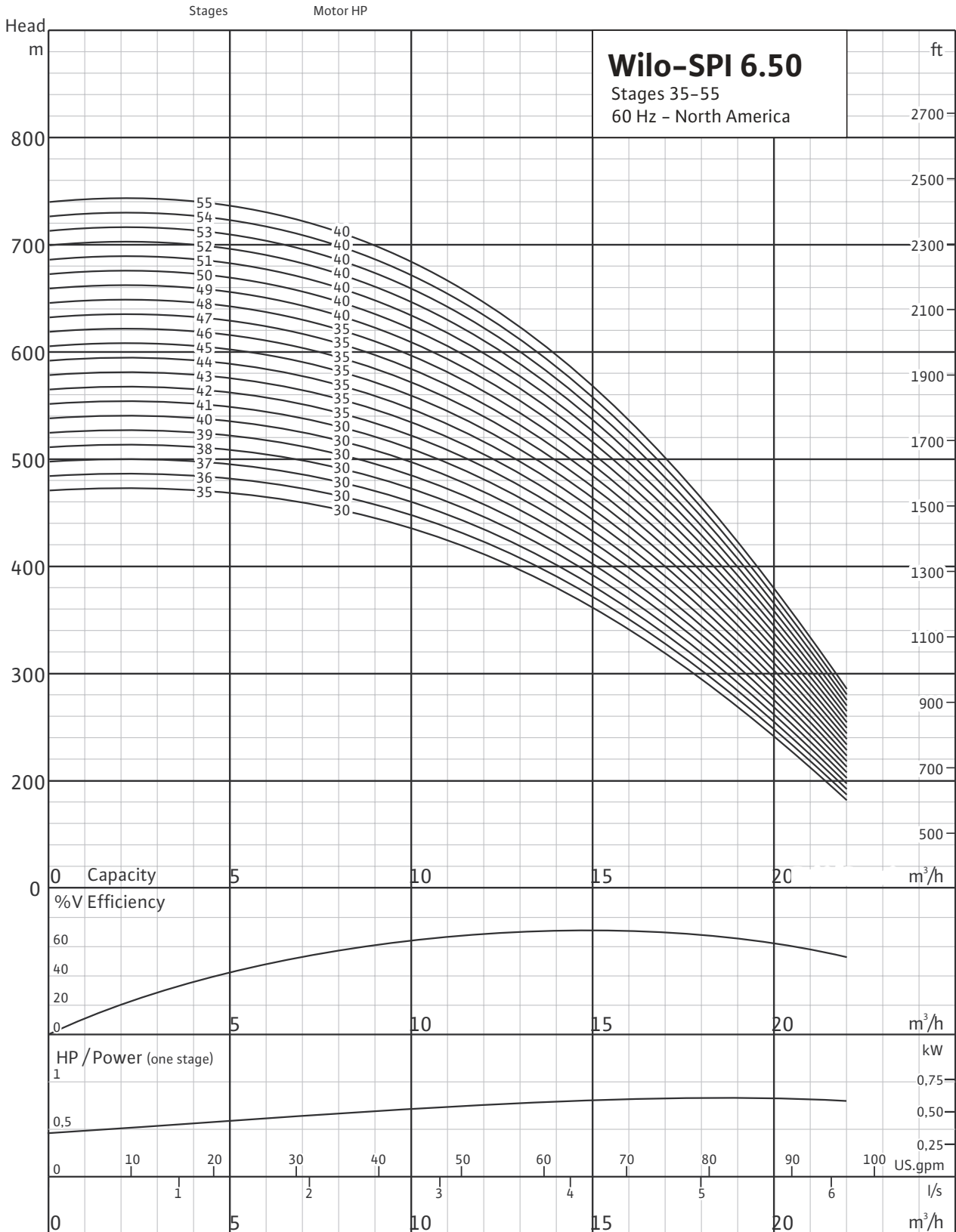
## Stainless Steel Submersible Well Pumps



### Stages 18-34

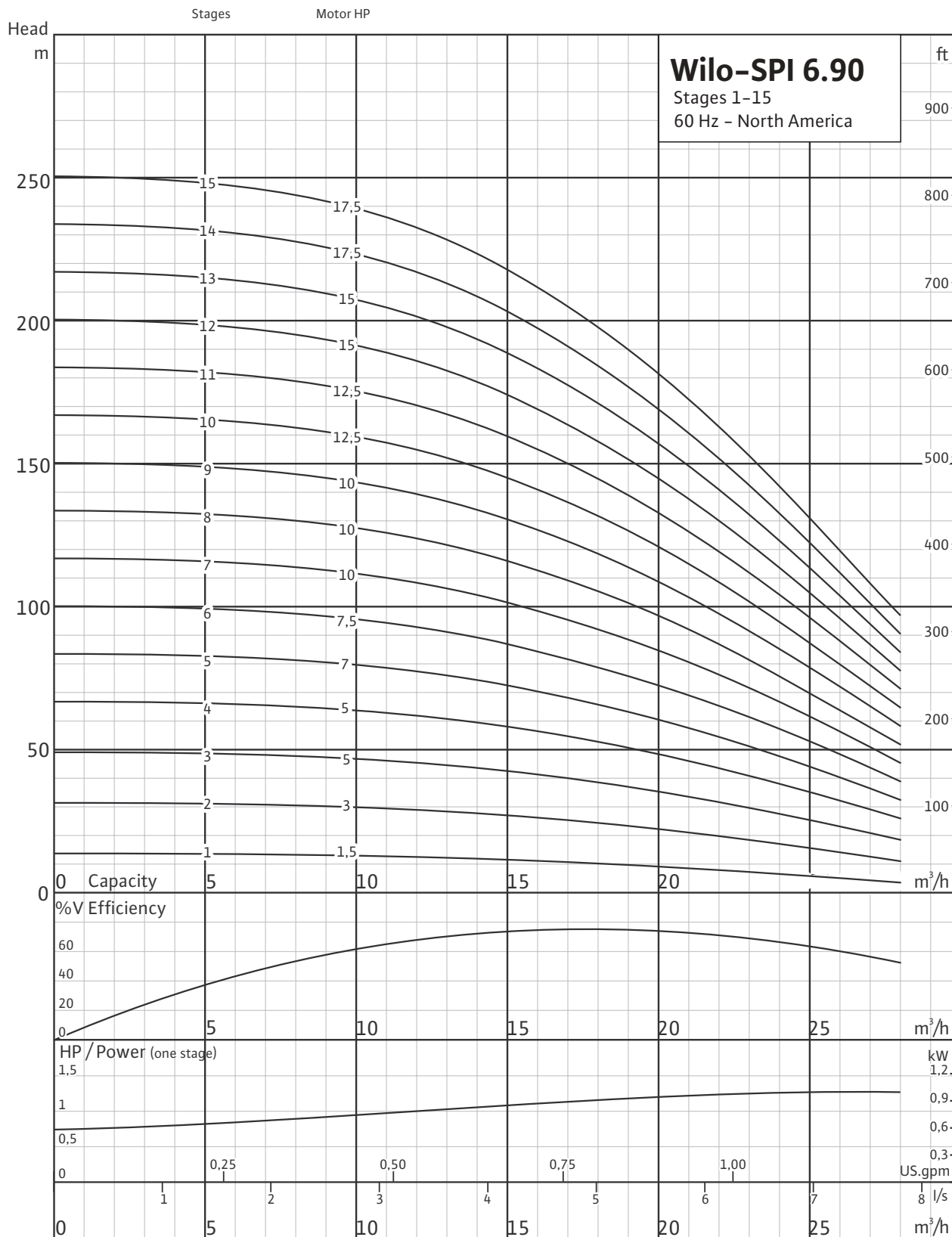


Stages 35-55





Stages 1-15

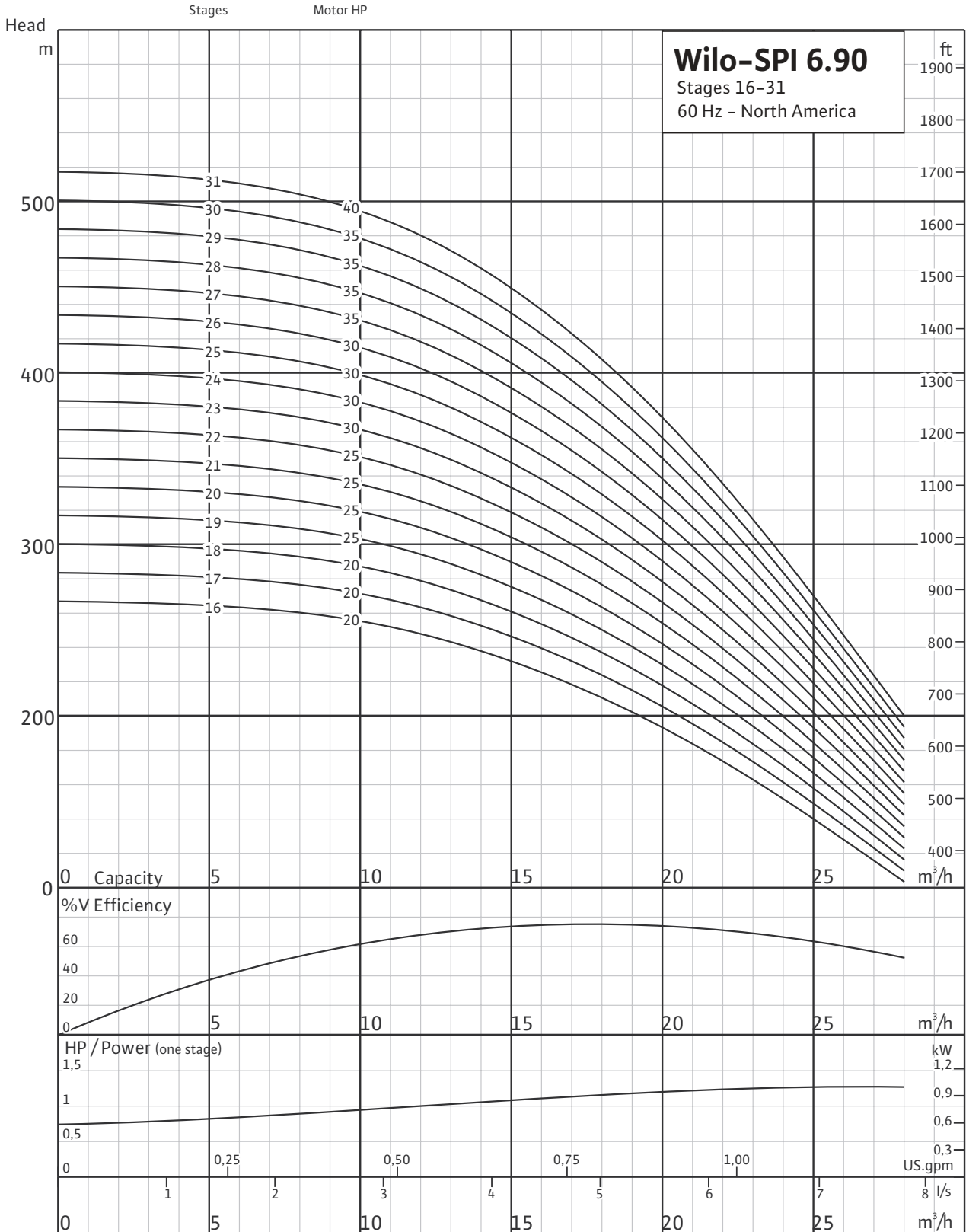


# Wilo-SPI 6.90

Stainless Steel Submersible Well Pumps



## Stages 16-31

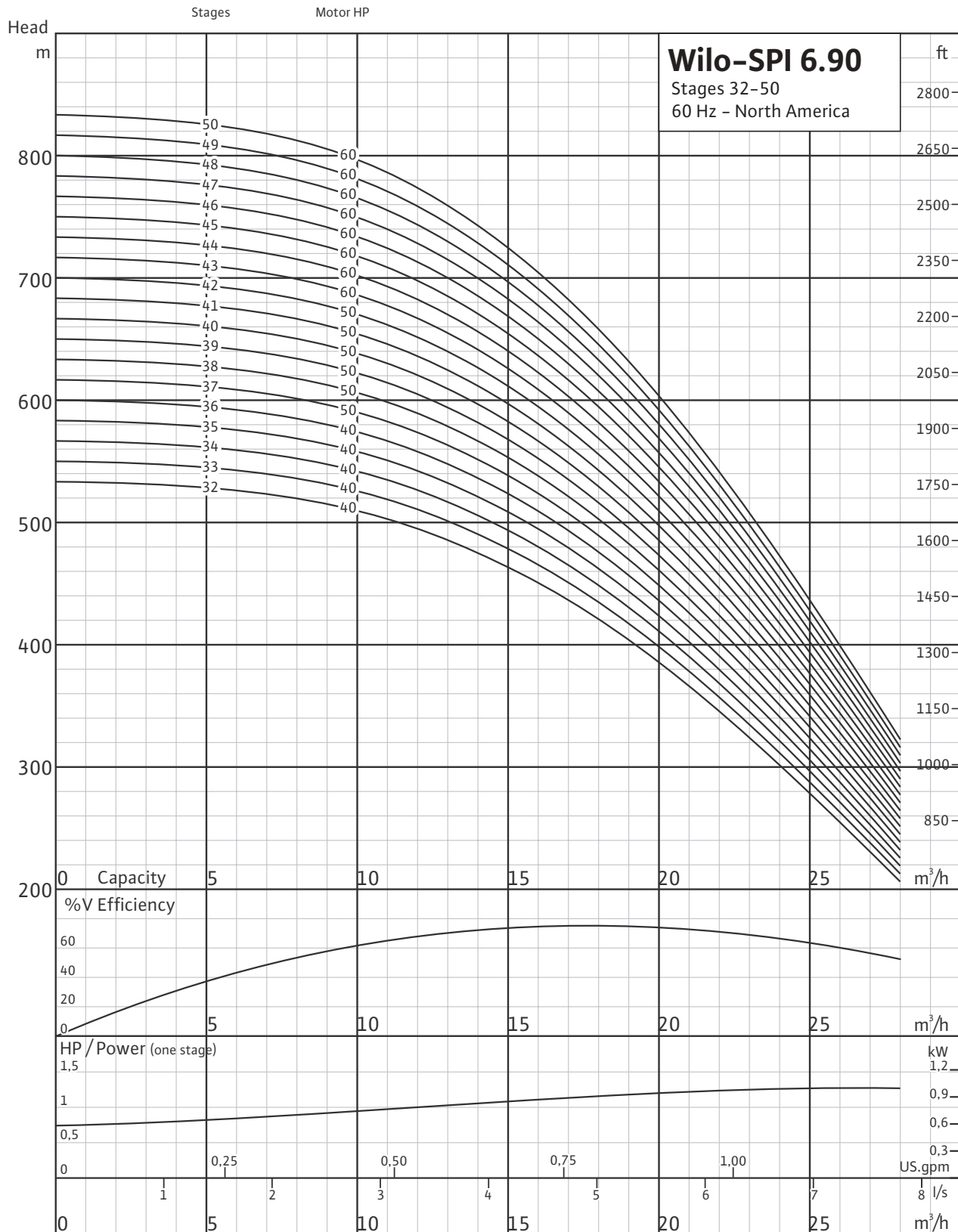


# Wilo-SPI 6.90

## Stainless Steel Submersible Well Pumps



### Stages 32-50

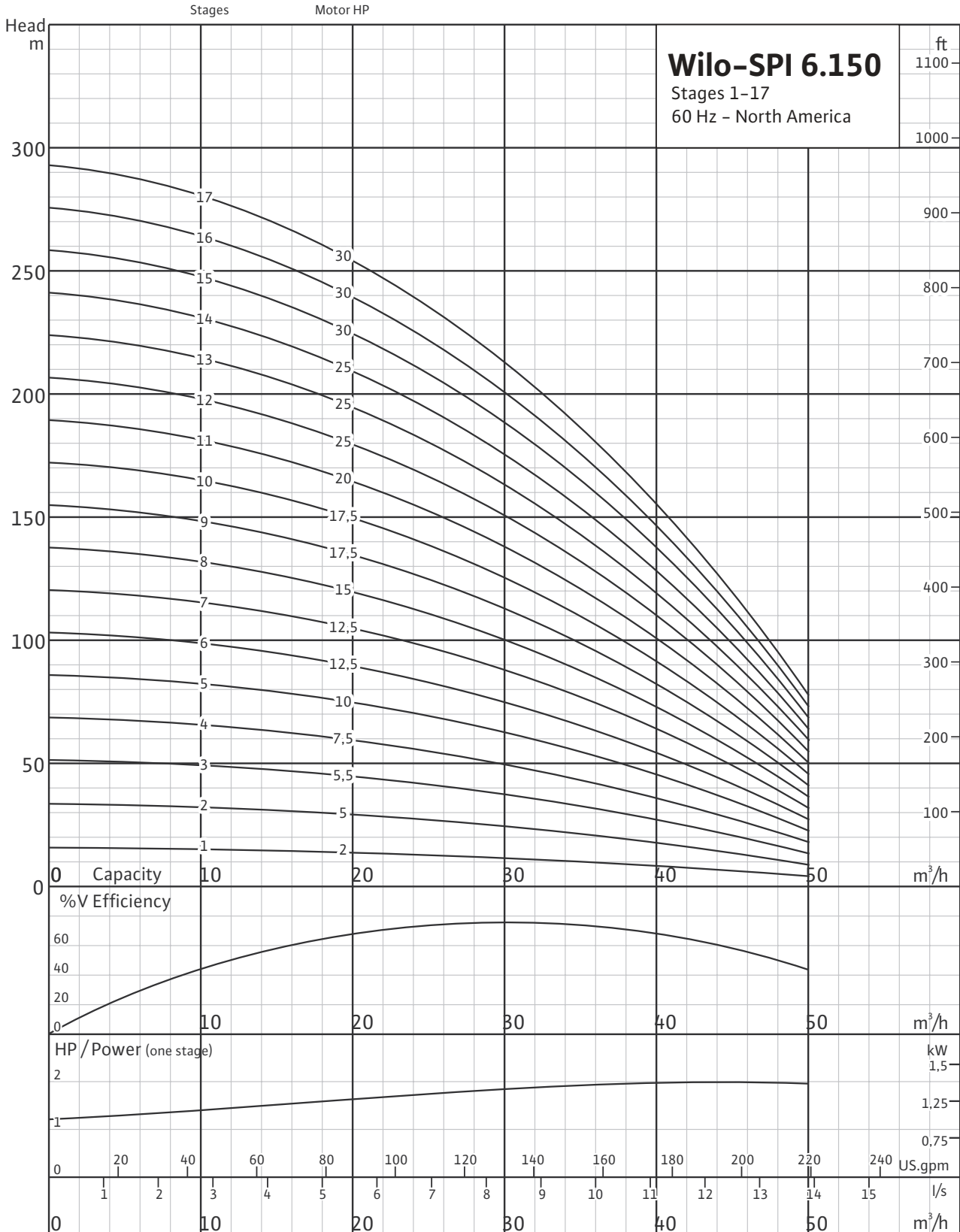


# Wilo-SPI 6.150

Stainless Steel Submersible Well Pumps



## Stages 1-17

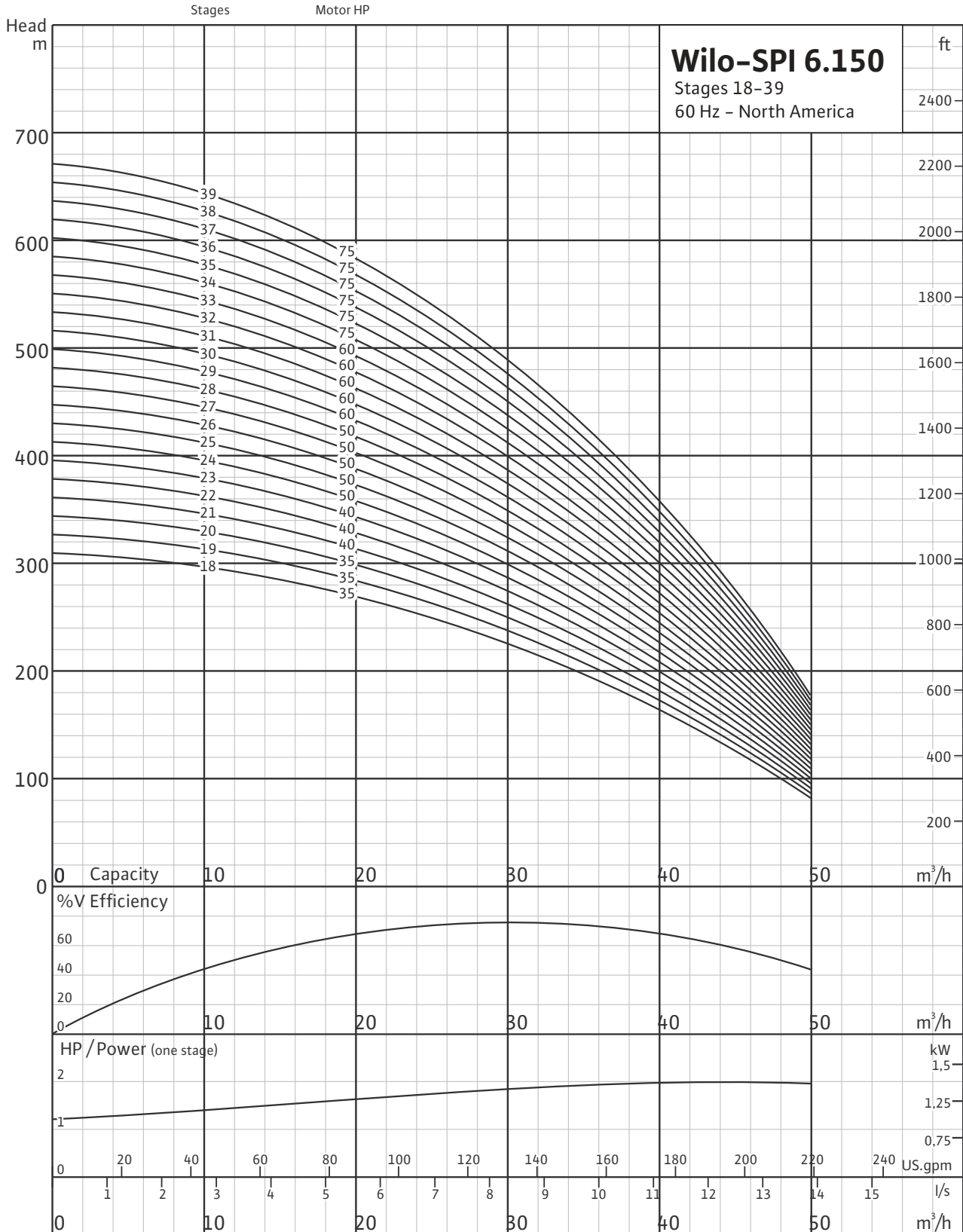


# Wilo-SPI 6.150

## Stainless Steel Submersible Well Pumps



### Stages 18-39

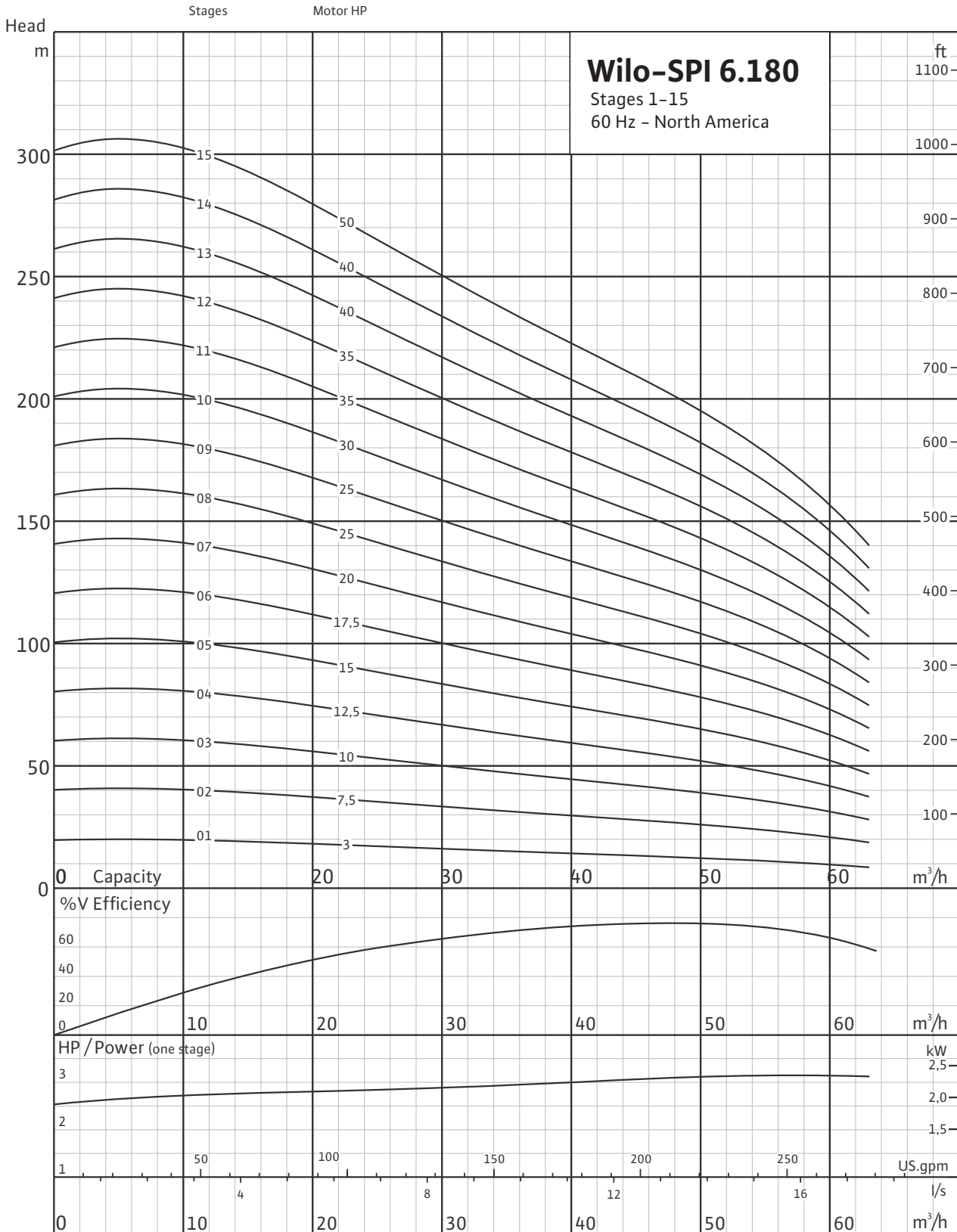


# Wilo-SPI 6.180

## Stainless Steel Submersible Well Pumps



### Stages 1-15

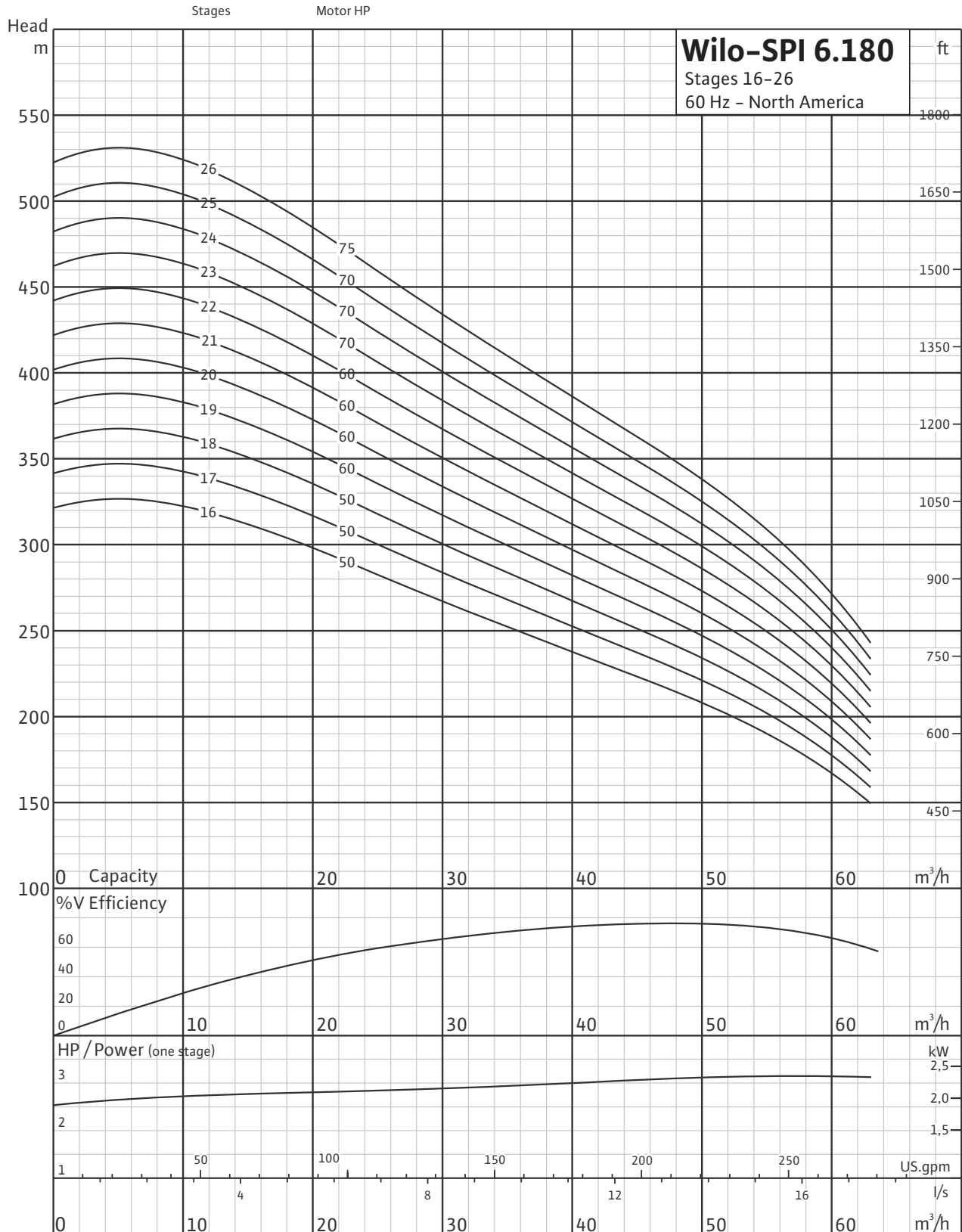


# Wilo-SPI 6.180

Stainless Steel Submersible Well Pumps



## Stages 16-26

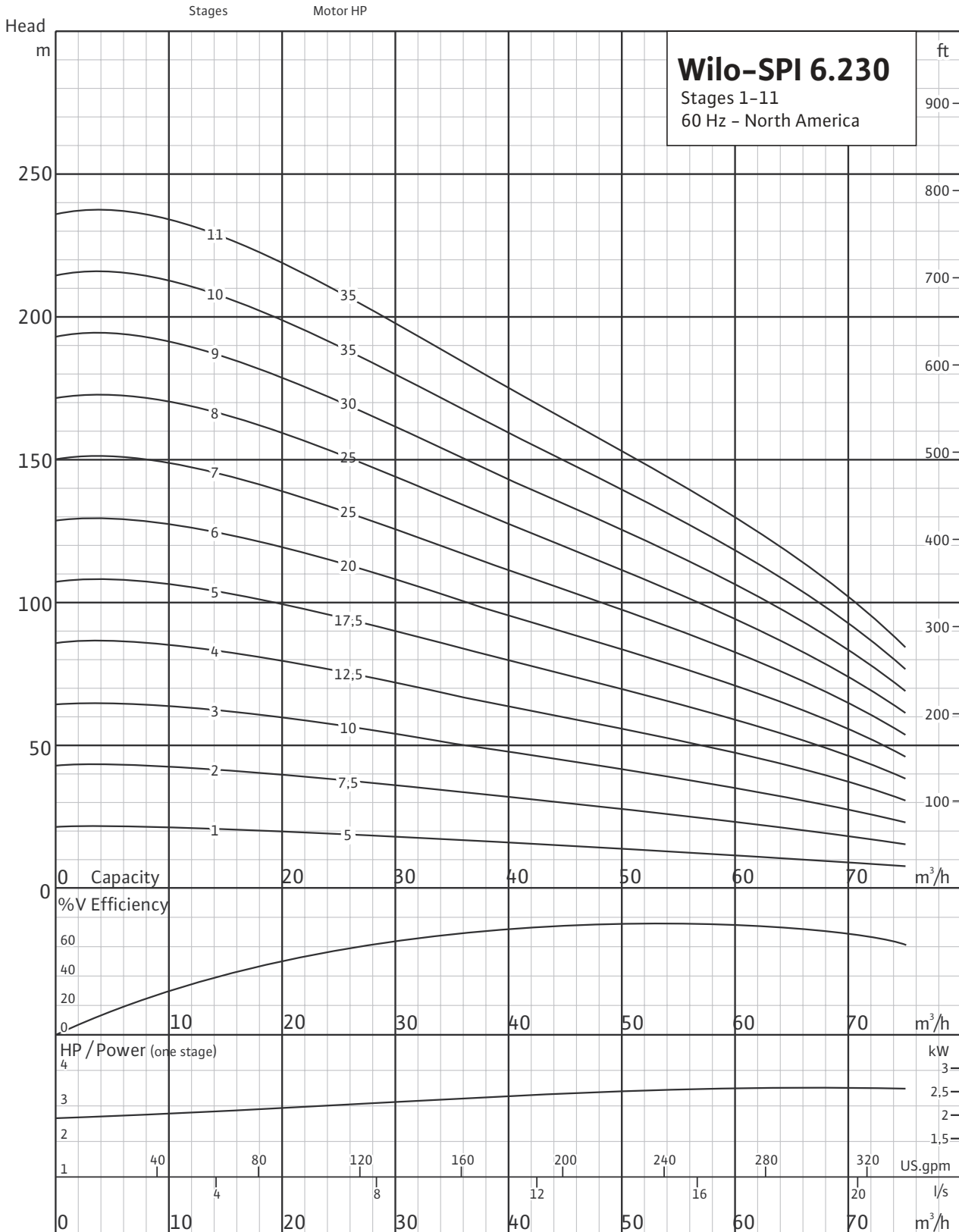


# Wilo-SPI 6.230

Stainless Steel Submersible Well Pumps



## Stages 1-11



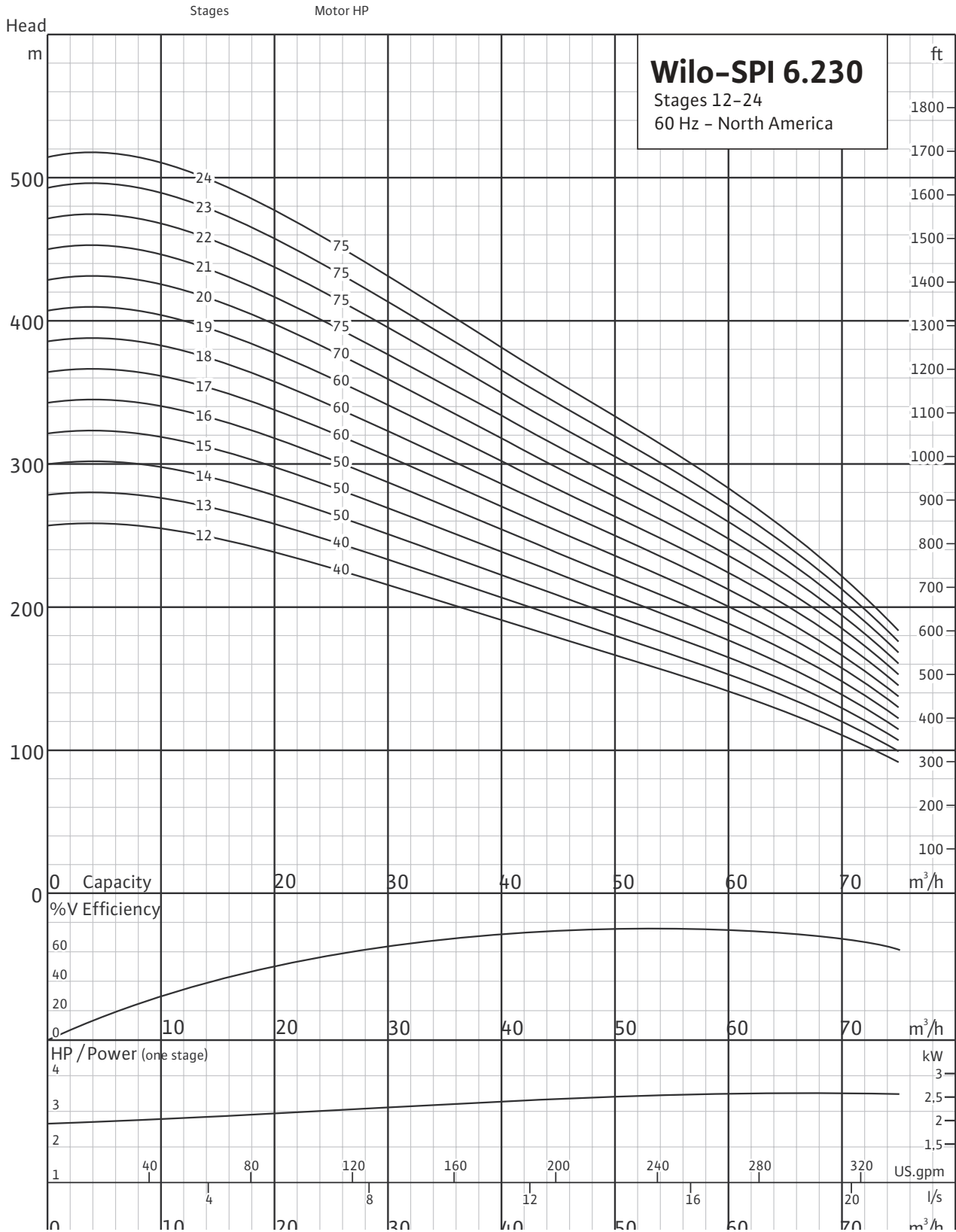


# Wilo-SPI 6.230

## Stainless Steel Submersible Well Pumps



### Stages 12-24

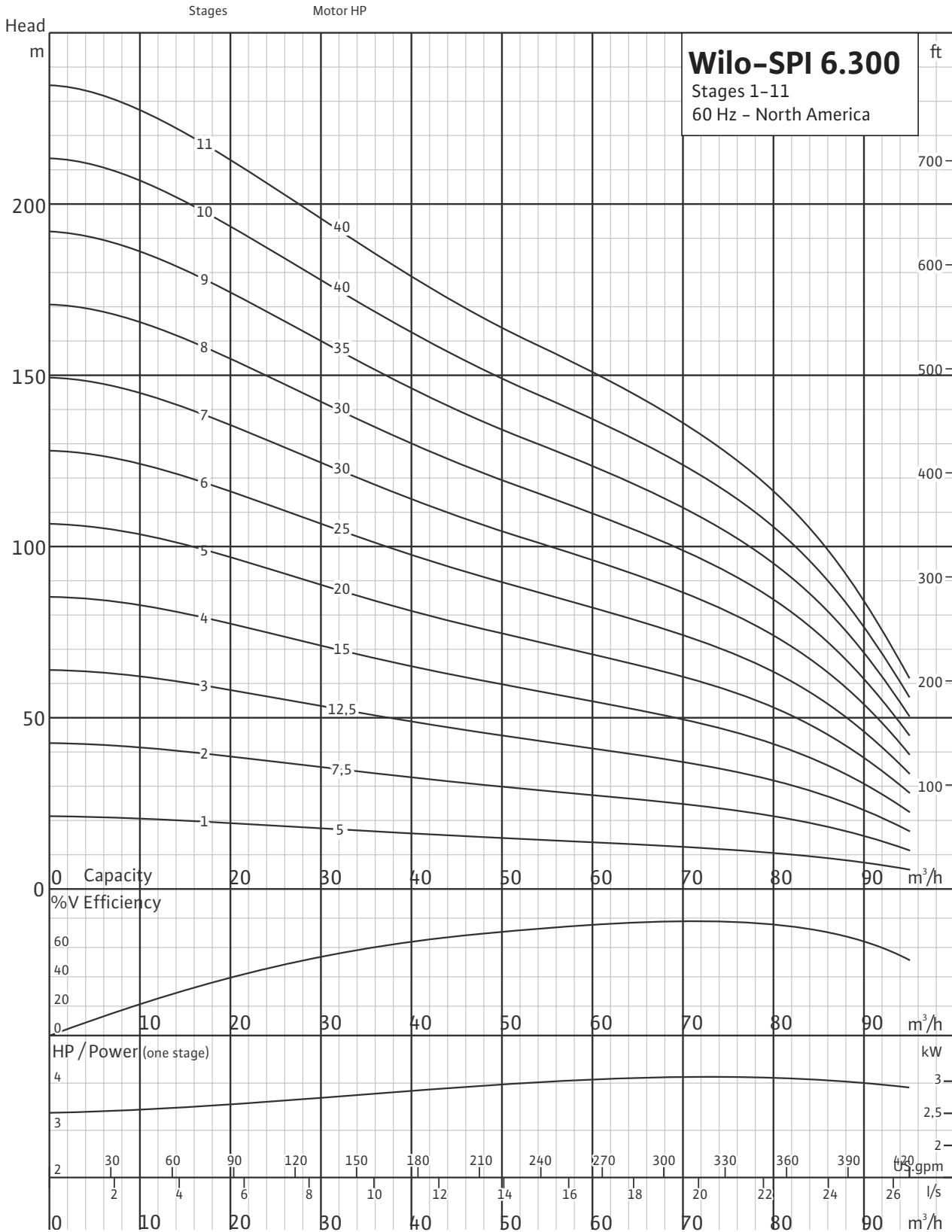


# Wilco-SPI 6.300

Stainless Steel Submersible Well Pumps



## Stages 1-11

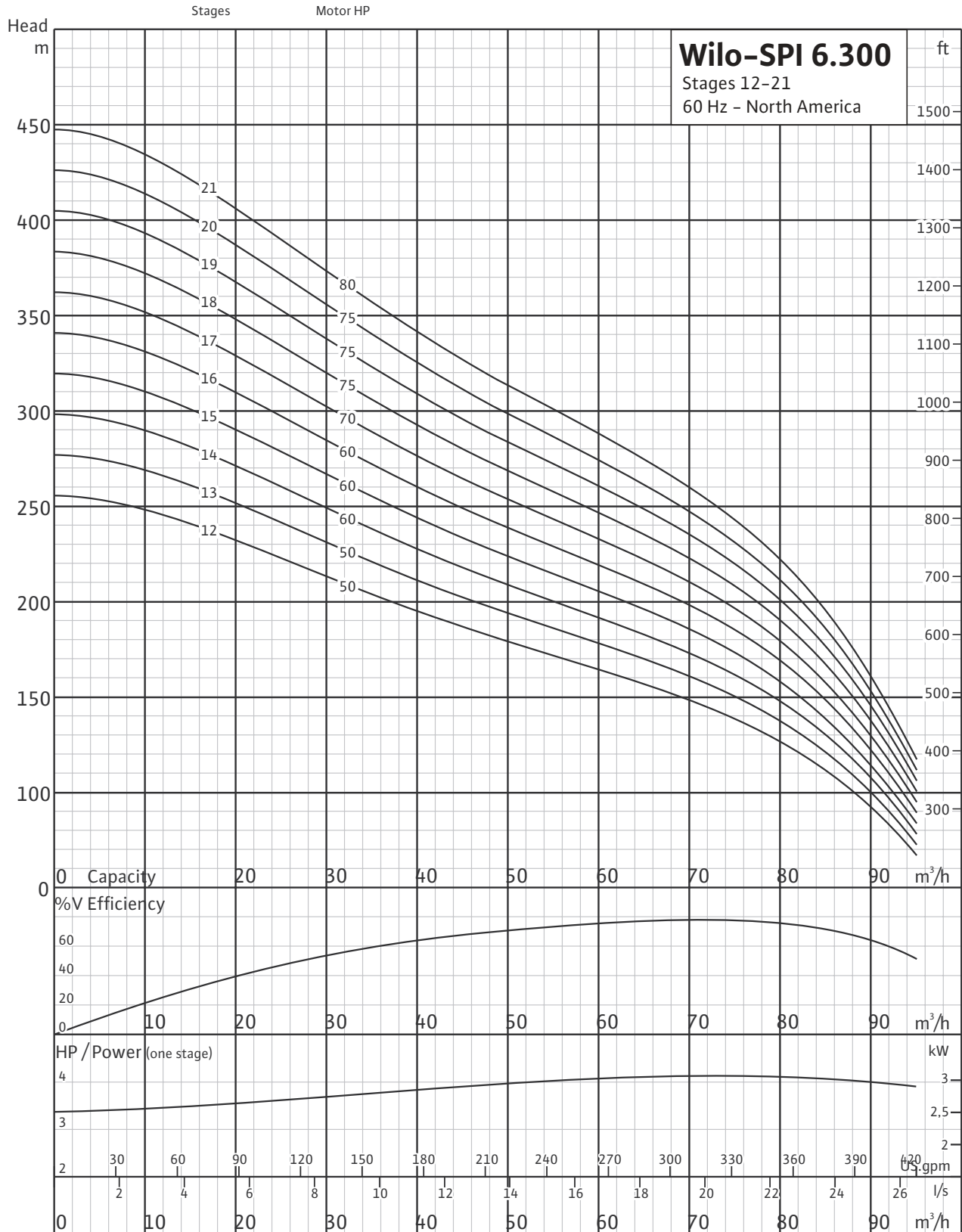


# Wilo-SPI 6.300

Stainless Steel Submersible Well Pumps



## Stages 12-21



### Weights and Dimensions

50 GPM									
Model	HP	Dimensions (mm)					Weights (kg)		
		A	B	C	D	E	Complete Unit	Pump End	Motor
SPI 6.50-01	1	930	505	425	132	94	32	7	25
SPI 6.50-02	2	1042	552	490	132	94	37	8	29
SPI 6.50-03	3	1140	588	552	132	94	43	9	34
SPI 6.50-04	3	1121	609	512	132	94	44	10	34
SPI 6.50-05	4	1221	649	572	132	94	51	11	39
SPI 6.50-06	5.5	1281	649	632	132	142	53	13	40
SPI 6.50-07	5.5	1342	649	693	132	142	54	14	40
SPI 6.50-08	7.5	1431	678	753	132	142	58.5	15	43.5
SPI 6.50-09	7.5	1492	678	814	132	142	60.5	17	43.5
SPI 6.50-10	7.5	1552	678	874	132	142	61.5	18	43.5
SPI 6.50-11	10	1693	758	935	132	142	70	20	50
SPI 6.50-12	10	1753	758	995	132	142	71	21	50
SPI 6.50-13	10	1814	758	1056	132	142	73	23	50
SPI 6.50-14	15	1967	851	1116	132	142	84	24	60
SPI 6.50-15	15	2028	851	1177	132	142	86	26	60
SPI 6.50-16	15	2088	851	1237	132	142	87	27	60
SPI 6.50-17	15	2149	851	1298	132	142	88	28	60
SPI 6.50-18	15	2209	851	1358	132	142	90	30	60
SPI 6.50-19	15	2270	851	1419	132	142	91	31	60
SPI 6.50-20	15	2330	851	1479	132	142	93	33	60
SPI 6.50-21	20	2513	973	1540	132	142	106	34	72
SPI 6.50-22	20	2573	973	1600	132	142	108	36	72
SPI 6.50-23	20	2634	973	1661	132	142	109	37	72
SPI 6.50-24	20	2694	973	1721	132	142	111	39	72
SPI 6.50-25	20	2755	973	1782	132	142	112	40	72
SPI 6.50-26	20	2815	973	1842	132	142	113	41	72
SPI 6.50-27	20	2876	973	1903	132	142	115	43	72
SPI 6.50-28	25	2969	1006	1963	132	142	120	44	76
SPI 6.50-29	25	3030	1006	2024	132	142	122	46	76
SPI 6.50-30	25	3340	1006	2334	167	142	151	75	76
SPI 6.50-31	25	3401	1006	2395	167	142	152	76	76
SPI 6.50-32	25	3461	1006	2455	167	142	154	78	76
SPI 6.50-33	25	3522	1006	2516	167	142	156	80	76
SPI 6.50-34	25	3582	1006	2576	167	142	158	82	76
SPI 6.50-35	30	3743/3527	1106/890	2637	167	142/172	170/169	83	87/86
SPI 6.50-36	30	3803/3587	1106/890	2697	167	142/172	172/171	85	87/86

Weights and Dimensions

50 GPM									
Model	HP	Dimensions (mm)					Weights (kg)		
		A	B	C	D	E	Complete Unit	Pump End	Motor
SPI 6.50-37	30	3864/3648	1106/890	2758	167	142/172	174/173	87	87/86
SPI 6.50-38	30	3924/3708	1106/890	2818	167	142/172	176/175	89	87/86
SPI 6.50-39	30	3985/3769	1106/890	2879	167	142/172	178/177	91	87/86
SPI 6.50-40	30	4045/3829	1106/890	2939	167	142/172	179/178	92	87/86
SPI 6.50-41	30	4106/3890	1106/890	3000	167	142/172	181/180	94	87/86
SPI 6.50-42	35	4277/4000	1217/940	3060	167	142/172	194/187	96	98/91
SPI 6.50-43	35	4338/4061	1217/940	3121	167	142/172	196/189	98	98/91
SPI 6.50-44	35	4398/4121	1217/940	3181	167	142/172	198/191	100	98/91
SPI 6.50-45	35	4459/4182	1217/940	3242	167	142/172	199/192	101	98/91
SPI 6.50-46	35	4519/4242	1217/940	3302	167	142/172	201/194	103	98/91
SPI 6.50-47	35	4580/4303	1217/940	3363	167	142/172	203/196	105	98/91
SPI 6.50-48	35	4640/4363	1217/940	3423	167	142/172	205/198	107	98/91
SPI 6.50-49	40	4731/4464/4540	1247/980/1056	3484	167	142/172/192	211/211/237	108	103/103/129
SPI 6.50-50	40	4791/4524/4600	1247/980/1056	3544	167	142/172/192	213/213/239	110	103/103/129
SPI 6.50-51	40	4852/4585/4661	1247/980/1056	3605	167	142/172/192	215/215/241	112	103/103/129
SPI 6.50-52	40	4912/4645/4721	1247/980/1056	3665	167	142/172/192	217/217/243	114	103/103/129
SPI 6.50-53	40	4973/4706/4782	1247/980/1056	3726	167	142/172/192	219/219/245	116	103/103/129
SPI 6.50-54	40	5033/4766/4842	1247/980/1056	3786	167	142/172/192	220/220/246	117	103/103/129
SPI 6.50-55	40	5094/4827/4903	1247/980/1056	3847	167	142/172/192	222/222/248	119	103/103/129

### Weights and Dimensions

90 GPM									
Model	HP	Dimensions (mm)					Weights (kg)		
		A	B	C	D	E	Complete Unit	Pump End	Motor
SPI 6.90-01	1.5	929	529	400	132	94	23	7	16
SPI 6.90-02	3	969	569	400	132	94	30	8	22
SPI 6.90-03	4	1059	609	450	132	94	39	9	30
SPI 6.90-04	5	1160	649	511	132	142	50	10	40
SPI 6.90-05	5.5	1250	678	572	132	142	54.5	11	43.5
SPI 6.90-06	7.5	1310	678	632	132	142	56.5	13	43.5
SPI 6.90-07	10	1451	758	693	132	142	64	14	50
SPI 6.90-08	10	1511	758	753	132	142	66	16	50
SPI 6.90-09	10	1572	758	814	132	142	67	17	50
SPI 6.90-10	12.5	1674	800	874	132	142	73	18	55
SPI 6.90-11	12.5	1735	800	935	132	142	75	20	55
SPI 6.90-12	15	1846	851	995	132	142	81	21	60
SPI 6.90-13	15	1907	851	1056	132	142	83	23	60
SPI 6.90-14	17.5	2027	911	1116	132	142	89	24	65
SPI 6.90-15	17.5	2088	911	1177	132	142	91	26	65
SPI 6.90-16	20	2210	973	1237	132	142	99	27	72
SPI 6.90-17	20	2271	973	1298	132	142	101	29	72
SPI 6.90-18	20	2331	973	1358	132	142	102	30	72
SPI 6.90-19	25	2425	1006	1419	132	142	107	31	76
SPI 6.90-20	25	2485	1006	1479	132	142	109	33	76
SPI 6.90-21	25	2546	1006	1540	132	142	110	34	76
SPI 6.90-22	25	2606	1006	1600	132	142	112	36	76
SPI 6.90-23	30	2767/2551	1106/890	1661	132	142/172	124/123	37	87/86
SPI 6.90-24	30	2827/2611	1106/890	1721	132	142/172	126/125	39	87/86
SPI 6.90-25	30	2888/2672	1106/890	1782	132	142/172	127/126	40	87/86
SPI 6.90-26	30	2948/2732	1106/890	1842	132	142/172	129/128	42	87/86
SPI 6.90-27	35	3120/2843	1217/940	1903	132	142/172	141/134	43	98/91
SPI 6.90-28	35	3180/2903	1217/940	1963	132	142/172	143/136	45	98/91
SPI 6.90-29	35	3241/2964	1217/940	2024	132	142/172	144/137	46	98/91
SPI 6.90-30	35	3551/3274	1217/940	2334	167	142/172	173/166	75	98/91
SPI 6.90-31	40	3642/3375/3451	1247/980/1056	2395	167	142/172/192	180/180/206	77	103/103/129
SPI 6.90-32	40	3702/3435/3511	1247/980/1056	2455	167	142/172/192	181/181/207	78	103/103/129
SPI 6.90-33	40	3763/3496/3572	1247/980/1056	2516	167	142/172/192	183/183/209	80	103/103/129
SPI 6.90-34	40	3823/3556/3632	1247/980/1056	2576	167	142/172/192	185/185/211	82	103/103/129
SPI 6.90-35	40	3884/3617/3693	1247/980/1056	2637	167	142/172/192	187/187/213	84	103/103/129
SPI 6.90-36	40	3944/3677/3753	1247/980/1056	2697	167	142/172/192	189/189/215	86	103/103/129

Weights and Dimensions

90 GPM									
Model	HP	Dimensions (mm)					Weights (kg)		
		A	B	C	D	E	Complete Unit	Pump End	Motor
SPI 6.90-37	50	4105/3818/3874	1347/1060/1116	2758	167	142/172/192	197/200/225	87	110/113/138
SPI 6.90-38	50	4165/3878/3934	1347/1060/1116	2818	167	142/172/192	199/202/227	89	110/113/138
SPI 6.90-39	50	4226/3939/3995	1347/1060/1116	2879	167	142/172/192	201/204/229	91	110/113/138
SPI 6.90-40	50	4286/3999/4055	1347/1060/1116	2939	167	142/172/192	203/206/231	93	110/113/138
SPI 6.90-41	50	4347/4060/4116	1347/1060/1116	3000	167	142/172/192	205/208/233	95	110/113/138
SPI 6.90-42	50	4407/4120/4176	1347/1060/1116	3060	167	142/172/192	206/209/234	96	110/113/138
SPI 6.90-43	60	4260/4322	1139/1201	3121	167	172/192	225/250	98	127/152
SPI 6.90-44	60	4320/4382	1139/1201	3181	167	172/192	227/252	100	127/152
SPI 6.90-45	60	4381/4443	1139/1201	3242	167	172/192	229/254	102	127/152
SPI 6.90-46	60	4441/4503	1139/1201	3302	167	172/192	230/255	103	127/152
SPI 6.90-47	60	4502/4564	1139/1201	3363	167	172/192	232/257	105	127/152
SPI 6.90-48	60	4562/4624	1139/1201	3423	167	172/192	234/259	107	127/152
SPI 6.90-49	60	4623/4685	1139/1201	3484	167	172/192	236/261	109	127/152
SPI 6.90-50	60	4683/4745	1139/1201	3544	167	172/192	238/263	111	127/152

### Weights and Dimensions

150 GPM									
Model	HP	Dimensions (mm)					Weights (kg)		
		A	B	C	D	E	Complete Unit	Pump End	Motor
SPI 6.150-01	2	1023	589	434	132	94	34	7	27
SPI 6.150-02	4	1078	619	459	132	94	45	9	36
SPI 6.150-03	5.5	1203	649	554	132	142	51	11	40
SPI 6.150-04	7.5	1327	678	649	132	142	56.5	13	43.5
SPI 6.150-05	10	1502	758	744	132	142	65	15	50
SPI 6.150-06	12.5	1639	800	839	132	142	72	17	55
SPI 6.150-07	12.5	1734	800	934	132	142	74	19	55
SPI 6.150-08	15	1880	851	1029	132	142	81	21	60
SPI 6.150-09	17.5	2035	911	1124	132	142	88	23	65
SPI 6.150-10	17.5	2130	911	1219	132	142	90	25	65
SPI 6.150-11	20	2287	973	1314	132	142	99	27	72
SPI 6.150-12	25	2415	1006	1409	132	142	105	29	76
SPI 6.150-13	25	2510	1006	1504	132	142	107	31	76
SPI 6.150-14	25	2605	1006	1599	132	142	109	33	76
SPI 6.150-15	30	2800/2584	1106/890	1694	132	142/172	123/122	36	87/86
SPI 6.150-16	30	2895/2679	1106/890	1789	132	142/172	125/124	38	87/86
SPI 6.150-17	30	2990/2774	1106/890	1884	132	142/172	127/126	40	87/86
SPI 6.150-18	35	3196/2919	1217/940	1979	132	142/172	140/133	42	98/91
SPI 6.150-19	35	3291/3014	1217/940	2074	132	142/172	142/135	44	98/91
SPI 6.150-20	35	3386/3109	1217/940	2169	132	142/172	144/137	46	98/91
SPI 6.150-21	40	3511/3244/3320	1247/980/1056	2264	132	142/172/192	151/151/177	48	103/103/129
SPI 6.150-22	40	3606/3339/3415	1247/980/1056	2359	132	142/172/192	153/153/179	50	103/103/129
SPI 6.150-23	40	3701/3434/3510	1247/980/1056	2454	132	142/172/192	155/155/181	52	103/103/129
SPI 6.150-24	50	3896/3609/3665	1347/1060/1116	2549	132	142/172/192	164/167/192	54	110/113/138
SPI 6.150-25	50	3991/3704/3760	1347/1060/1116	2644	132	142/172/192	166/169/194	56	110/113/138
SPI 6.150-26	50	4086/3799/3855	1347/1060/1116	2739	132	142/172/192	168/171/196	58	110/113/138
SPI 6.150-27	50	4181/3894/3950	1347/1060/1116	2834	132	142/172/192	170/173/198	60	110/113/138
SPI 6.150-28	50	4276/3989/4045	1347/1060/1116	2929	132	142/172/192	173/176/201	63	110/113/138
SPI 6.150-29	60	4163/4225	1139/1201	3024	132	172/192	192/217	65	127/152
SPI 6.150-30	60	4508/4570	1139/1201	3369	167	172/192	227/252	100	127/152
SPI 6.150-31	60	4603/4665	1139/1201	3464	167	172/192	230/255	103	127/152
SPI 6.150-32	60	4698/4760	1139/1201	3559	167	172/192	232/257	105	127/152
SPI 6.150-33	60	4793/4855	1139/1201	3654	167	172/192	235/260	108	127/152
SPI 6.150-34	60	4888/4950	1139/1201	3749	167	172/192	238/263	111	127/152
SPI 6.150-35	70	5062/5130	1218/1286	3844	167	172/192	251/283	113	138/170
SPI 6.150-36	70	5157/5225	1218/1286	3939	167	172/192	254/286	116	138/170



**Weights and Dimensions**

<b>150 GPM</b>									
Model	HP	Dimensions (mm)					Weights (kg)		
		A	B	C	D	E	Complete Unit	Pump End	Motor
<b>SPI 6.150-37</b>	70	5252/5320	1218/1286	4034	167	172/192	256/288	118	138/170
<b>SPI 6.150-38</b>	70	5347/5415	1218/1286	4129	167	172/192	259/291	121	138/170
<b>SPI 6.150-39</b>	70	5442/5510	1218/1286	4224	167	172/192	262/294	124	138/170

### Weights and Dimensions

180 GPM									
Model	HP	Dimensions (mm)					Weights (kg)		
		A	B	C	D	E	Complete Unit	Pump End	Motor
SPI 6.180-01	3	1083	434	589	167	94	40	13	27
SPI 6.180-02	7.5	1137	459	619	167	94	51	15	36
SPI 6.180-03	10	1312	554	758	167	142	57	17	40
SPI 6.180-04	12.5	1449	649	800	167	142	63	19.5	43.5
SPI 6.180-05	15	1655	744	911	167	142	69	19	50
SPI 6.180-06	17.5	1812	839	973	167	142	76	21	55
SPI 6.180-07	20	1940	934	1006	167	142	79	24	55
SPI 6.180-08	25	2035	1029	1006	167	142	86	26	60
SPI 6.180-09	25	2230/2014	1124	1106/890	167	142/172	128/129	41/43	87/86
SPI 6.180-10	30	2436/2159	1219	1217/940	167	142/172	130/129	41/43	87/86
SPI 6.180-11	35	2531/2254	1314	1217/940	167	142/172	132/131	41/43	87/86
SPI 6.180-12	40	2656/2389/2465	1409	1247/980/1056	167	142/172/192	144/137	46/45	98/91
SPI 6.180-13	40	2751/2484/2560	1504	1247/980/1056	167	142/172/192	147/146	49/45	98/91
SPI 6.180-14	40	2946/2659/2715	1599	1347/1060/1116	167	142/172/192	149/142	51/52	98/91
SPI 6.180-15	50	3041/2754/2810	1694	1347/1060/1116	167	142/172/192	151/151/177	48/48/106	103/103/129
SPI 6.180-16	50	3136/2849/2905	1789	1347/1060/1116	167	142/172/192	153/153/179	50/50/108	103/103/129
SPI 6.180-17	60	3023/3085	1884	1139/1201	167	172/192	155/155/181	52/52/110	103/103/129
SPI 6.180-18	60	3118/3180	1979	1139/1201	167	172/192	164/167/192	54/54/54	110/113/138
SPI 6.180-19	60	3213/3275	2074	1139/1201	167	172/192	166/169/194	56/56/56	110/113/138
SPI 6.180-20	60	3387/3455	2169	1218/1286	167	172/192	168/171/196	58/58/58	110/113/138
SPI 6.180-21	60	3514/3550	2264	1250/1286	167	172/192	170/173/198	60/60/60	110/113/138
SPI 6.180-22	60	3609/3645	2359	1250/1286	167	172/192	173/176/201	63/63/63	110/113/138
SPI 6.180-23	70	3704/3740	2454	1250/1286	167	172/192	192/217	65/65	127/152
SPI 6.180-24	70	3799/3835	2549	1250/1286	167	172/192	227/252	100/100	127/152
SPI 6.180-25	70	3894/3930	2644	1250/1286	167	172/192	230/255	103/103	127/152
SPI 6.180-26	75	3989/4025	2739	1250/1286	167	172/192	232/257	105/105	127/152

Weights and Dimensions

230 GPM									
Model	HP	Dimensions (mm)					Weights (kg)		
		A	B	C	D	E	Complete Unit	Pump End	Motor
SPI 6.230-01	5	1031	649	382	144	142	47	7	40
SPI 6.230-02	7.5	1172	678	494	144	142	53.5	10	43.5
SPI 6.230-03	10	1364	758	606	144	142	62	12	50
SPI 6.230-04	12.5	1518	800	718	144	142	70	15	55
SPI 6.230-05	15	1741	911	830	144	142	83	18	65
SPI 6.230-06	20	1915	973	942	144	142	92	20	72
SPI 6.230-07	25	2060	1006	1054	144	142	99	23	76
SPI 6.230-08	25	2172	1006	1166	144	142	102	26	76
SPI 6.230-09	30	2384/2168	1106/890	1278	144	142/172	115/114	28	87/86
SPI 6.230-10	35	2607/2330	1217/940	1390	144	142/172	129/122	31	98/91
SPI 6.230-11	35	2719/2442	1217/940	1502	144	142/172	132/125	34	98/91
SPI 6.230-12	40	2861/2594/2670	1247/980/1056	1614	144	142/172/192	139/139/165	36	103/103/129
SPI 6.230-13	40	2973/2706/2782	1247/980/1056	1726	144	142/172/192	142/142/168	39	103/103/129
SPI 6.230-14	50	3185/2898/2954	1347/1060/1116	1838	144	142/172/192	152/155/180	42	110/113/138
SPI 6.230-15	50	3297/3010/3066	1347/1060/1116	1950	144	142/172/192	154/157/182	44	110/113/138
SPI 6.230-16	50	3409/3122/3178	1347/1060/1116	2062	144	142/172/192	157/160/185	47	110/113/138
SPI 6.230-17	60	3313/3375	1139/1201	2174	144	172/192	176/201	49	127/152
SPI 6.230-18	60	3425/3487	1139/1201	2286	144	172/192	179/204	52	127/152
SPI 6.230-19	60	3537/3599	1139/1201	2398	144	172/192	182/207	55	127/152
SPI 6.230-20	70	3728/3796	1218/1286	2510	144	172/192	195/227	57	138/170
SPI 6.230-21	75	3872/3908	1250/1286	2622	144	172/192	198/230	60	138/170
SPI 6.230-22	75	3984/4020	1250/1286	2734	144	172/192	201/233	63	138/170
SPI 6.230-23	75	4096/4132	1250/1286	2846	144	172/192	203/235	65	138/170
SPI 6.230-24	75	4208/4244	1250/1286	2958	144	172/192	206/238	68	138/170

### Weights and Dimensions

300 GPM									
Model	HP	Dimensions (mm)					Weights (kg)		
		A	B	C	D	E	Complete Unit	Pump End	Motor
SPI 6.300-01	5	1031	649	382	144	142	47	7	40
SPI 6.300-02	7.5	1172	678	494	144	142	53.5	10	43.5
SPI 6.300-03	10	1406	800	606	144	142	67	12	55
SPI 6.300-04	15	1569	851	718	144	142	75	15	60
SPI 6.300-05	20	1803	973	830	144	142	90	18	72
SPI 6.300-06	25	1948	1006	942	144	142	96	20	76
SPI 6.300-07	30	2160/1944	1106/890	1054	144	142/172	110/109	23	87/86
SPI 6.300-08	30	2272/2056	1106/890	1166	144	142/172	113/112	26	87/86
SPI 6.300-09	35	2495/2218	1217/940	1278	144	142/172	126/119	28	98/91
SPI 6.300-10	40	2637/2370/2446	1247/980/1056	1390	144	142/172/192	134/134/160	31	103/103/129
SPI 6.300-11	40	2749/2482/2558	1247/980/1056	1502	144	142/172/192	137/137/163	34	103/103/129
SPI 6.300-12	50	2961/2674/2730	1347/1060/1116	1614	144	142/172/192	146/149/174	36	110/113/138
SPI 6.300-13	50	3073/2786/2842	1347/1060/1116	1726	144	142/172/192	149/152/177	39	110/113/138
SPI 6.300-14	60	2977/3039	1139/1201	1838	144	172/192	169/194	42	127/152
SPI 6.300-15	60	3089/3151	1139/1201	1950	144	172/192	171/196	44	127/152
SPI 6.300-16	60	3201/3263	1139/1201	2062	144	172/192	174/199	47	127/152
SPI 6.300-17	70	3392/3460	1218/1286	2174	144	172/192	188/220	50	138/170
SPI 6.300-18	75	3536/3572	1250/1286	2286	144	172/192	190/222	52	138/170
SPI 6.300-19	75	3648/3684	1250/1286	2398	144	172/192	193/225	55	138/170
SPI 6.300-20	75	3760/3796	1250/1286	2510	144	172/192	196/228	58	138/170
SPI 6.300-21	80	3963	1341	2622	144	192	245	60	185

## Electrical Data

6" R-Series Motors									
HP	kW	PH (~)	Voltage	FL Amps	SF Amps	Start Amps	Cos $\Phi$	Eff.	Article Number
5	4	3	208/230	17	19.6	-	0.84	70%	2761123
			460	8.4	9.7	46.2	0.85	71%	2761124
7½	5.5	3	208/230	22.5	25.9	-	0.85	72%	2761125
			460	11.3	13	62.2	0.85	72%	2761126
10	7.5	3	208/230	28.5	32.8	-	0.85	78%	2761127
			460	14.2	16.3	78.1	0.85	78%	2761128
15	11	3	208/230	39.2	45.1	-	0.86	82%	2761129
			460	19.6	22.5	107.8	0.86	81%	2761130
20	15	3	208/230	54.8	63	-	0.85	81%	2761131
			460	27.3	31.4	150.2	0.86	80%	2761132
25	18.5	3	208/230	69.2	79.6	-	0.84	80%	2761133
			460	34.5	39.7	189.8	0.83	80%	2761134
30	22	3	208/230	80.3	92.4	-	0.85	81%	2761135
			460	40.1	46.1	220.6	0.84	82%	2761136
40	30	3	460	53.4	61.4	293.7	0.83	82%	2761137
50	37	3	460	66.6	76.6	366.3	0.85	82%	2761138
60	45	3	460	74.7	85.9	379	0.89	85%	2711652

6" AG / Mining Series Motors									
HP	kW	PH (~)	Voltage	FL Amps	SF Amps	Cos $\Phi$	Eff.	Article Number	
5	4	3	208/230	15.9	16.8	0.83	74%	2707636	
			460	7.8	8.9	0.85	76%	2707637	
7½	5.5	3	208/230	23.5	26.2	0.82	72%	2707638	
			460	11	12.6	0.82	78%	2707639	
10	7.5	3	208/230	29	32.8	0.81	80%	2707640	
			460	14.9	16.8	0.82	77%	2707641	
15	11	3	208/230	39.8	47.2	0.85	82%	2707642	
			460	21	24	0.81	80%	2707643	
20	15	3	208/230	54.5	61.5	0.85	82%	2707644	
			460	27.2	30.6	0.84	81%	2707645	
25	18.5	3	208/230	67.5	76	0.82	84%	2707646	
			460	33.8	38	0.84	82%	2707647	
30	22	3	208/230	80.2	91	0.82	85%	2707648	
			460	40.2	45.5	0.83	83%	2707649	
40	30	3	460	53	61.8	0.84	85%	2707650	
50	37	3	460	72	76	0.83	85%	2707651	

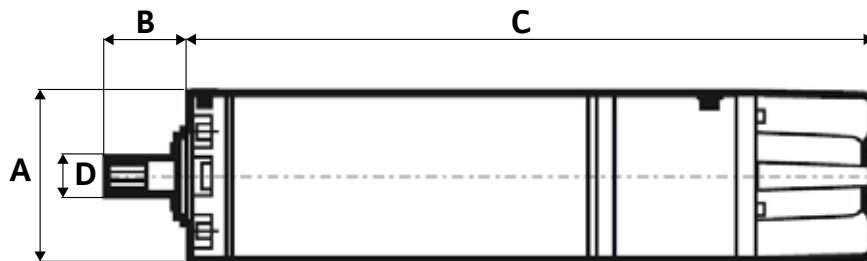
## Dimensional Data

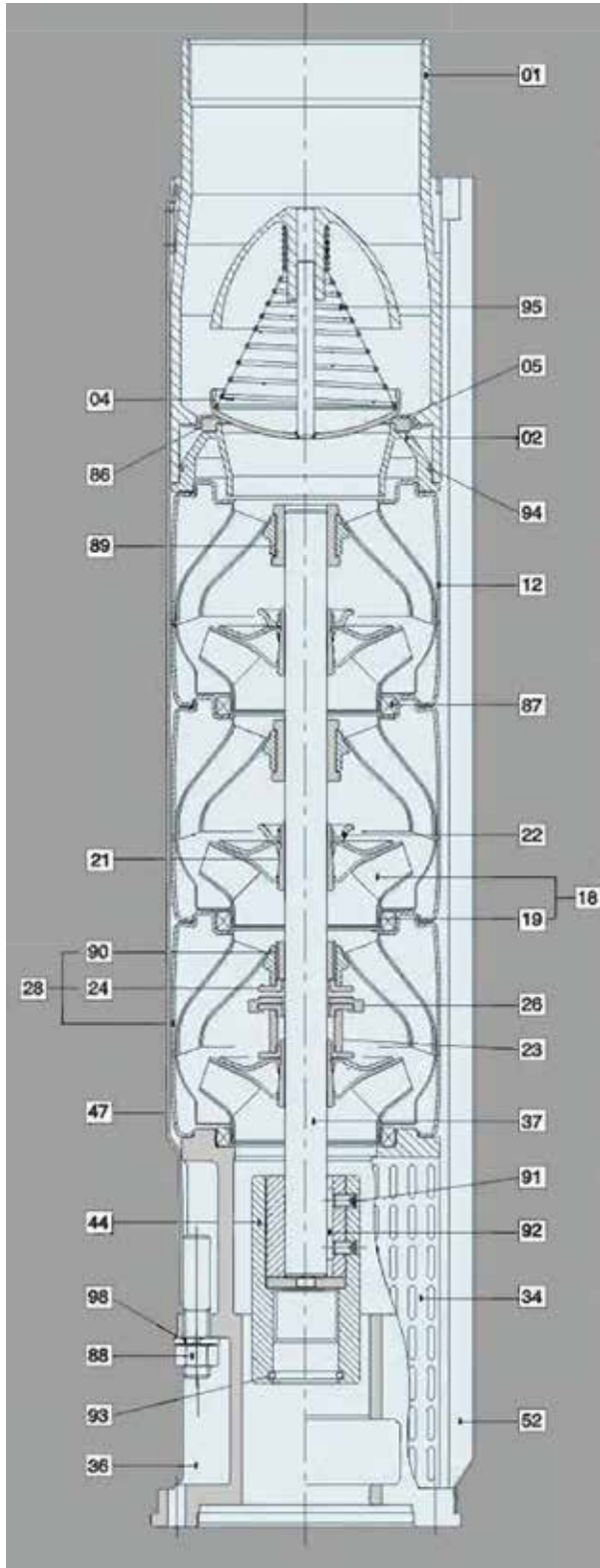
### 6" R Series Motors

HP	kW	PH	A	B	C	D	Weight (lb)
5	4	3	5.59 in	2.87 in	25.5 in	1 in	96.8
7.5	5.5	3	5.59 in	2.87 in	26.7 in	1 in	103.4
10	7.5	3	5.59 in	2.87 in	29.8 in	1 in	116.6
15	11	3	5.59 in	2.87 in	33.5 in	1 in	134.2
20	15	3	5.59 in	2.87 in	38.3 in	1 in	158.4
25	18.5	3	5.59 in	2.87 in	39.6 in	1 in	176
30	22	3	5.59 in	2.87 in	43.5 in	1 in	189.2
40	30	3	5.59 in	2.87 in	49.1 in	1 in	228.8
50	37	3	5.59 in	2.87 in	53.0 in	1 in	244.2
60	45	3	5.59 in	2.87 in	59.0 in	1 in	265

### 6" AG / Mining Series Motors

HP	kW	PH (~)	A	B	C	D	Weight (lbs)
5	4	3	5.47 in	2.87 in	21.2 in	1 in	70.4
7½	5.5	3	5.47 in	2.87 in	22.4 in	1 in	74.8
10	7.5	3	5.47 in	2.87 in	23.5 in	1 in	79.2
15	11	3	5.47 in	2.87 in	27.5 in	1 in	92.4
20	15	3	5.47 in	2.87 in	29.8 in	1 in	105.6
25	18.5	3	5.47 in	2.87 in	32.8 in	1 in	143
30	22	3	5.47 in	2.87 in	35.2 in	1 in	154
40	30	3	5.47 in	2.87 in	40.7 in	1 in	198
50	37	3	5.47 in	2.87 in	45.0 in	1 in	215





Pos.	Components	Material	Standard
01	Discharge	Stainless Steel	304
02	Lower Valve Seat Retainer	Stainless Steel	304
04	Valve Cup	Stainless Steel	304
05	Upper Valve Seat Retainer	Stainless Steel	304
12	Diffuser	Stainless Steel	304
18	Impeller	Stainless Steel	304
19	Ring of Impeller	Stainless Steel	304
21	Split Cone	Stainless Steel	304
22	Split Cone Nut	Stainless Steel	304
23	Nut for Stop Ring	Stainless Steel	304
24	Stop Ring	Stainless Steel	304
26	Spacing Washer for Stop Ring	Carbon/ Graphite/PTFE	
28	Bottom Diffuser	Stainless Steel	304
34	Strainer	Stainless Steel	304
36	Suction Interconnector	Stainless Steel	304
37	Pump Shaft	Stainless Steel	431
44	Coupling	Stainless Steel	304
47	Strap	Stainless Steel	304
52	Cable Guard	Stainless Steel	304
86	Valve Seat	NBR	
87	Neck Ring	SUS304+NBR	
88	Nut	Stainless Steel	304
89	Bearing	NBR	
90	Bearing	NBR+SUS304	
91	Screw	Stainless Steel	304
92	Key	Stainless Steel	304
93	O-Ring	NBR	
94	O-Ring	NBR	
95	Spring	Stainless Steel	304
98	Spring Washer	Stainless Steel	304

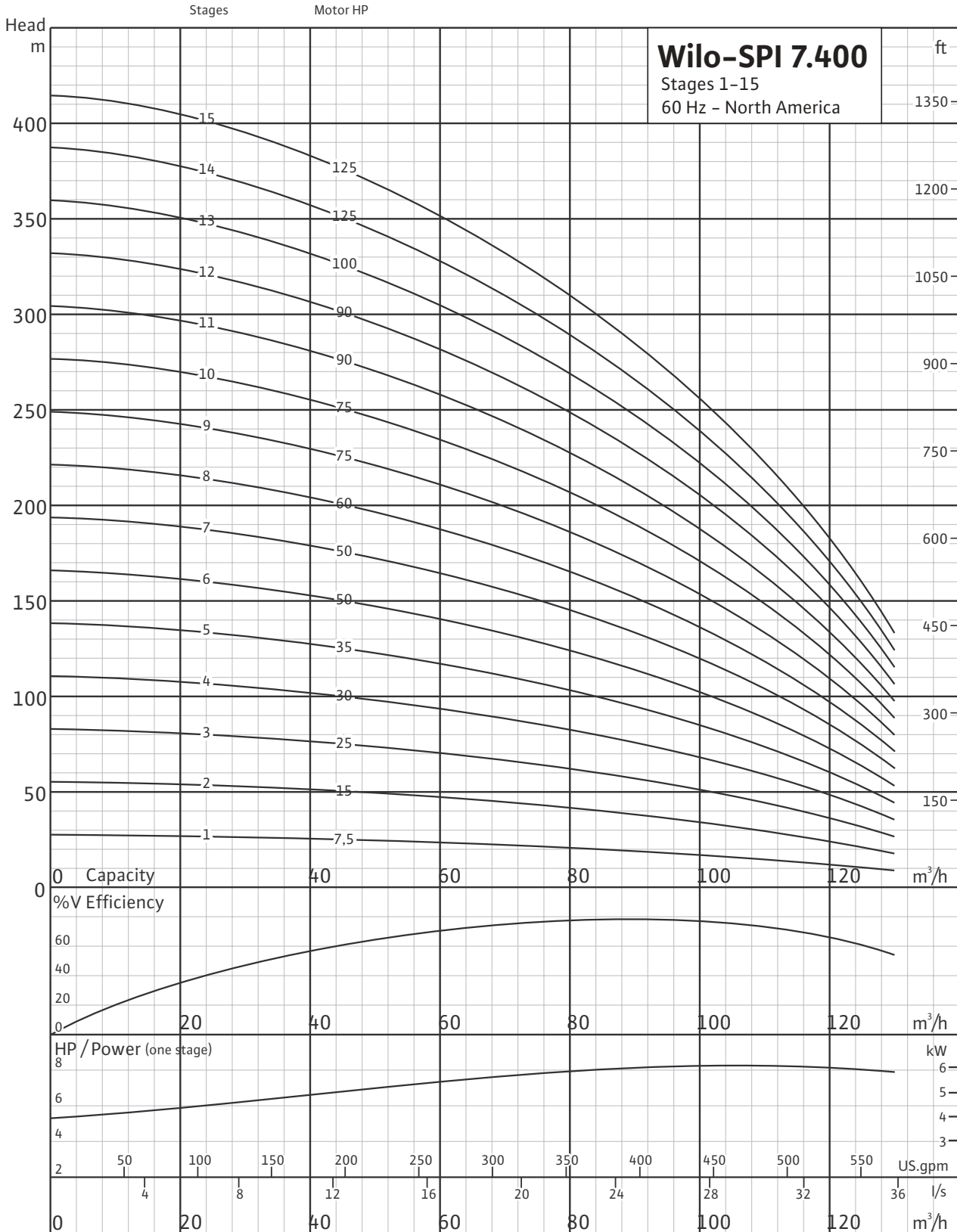
\*AISI 316 Stainless Steel Pumps are available on request.

# Wilco-SPI 7.400

Stainless Steel Submersible Well Pumps



## Stages 1-15



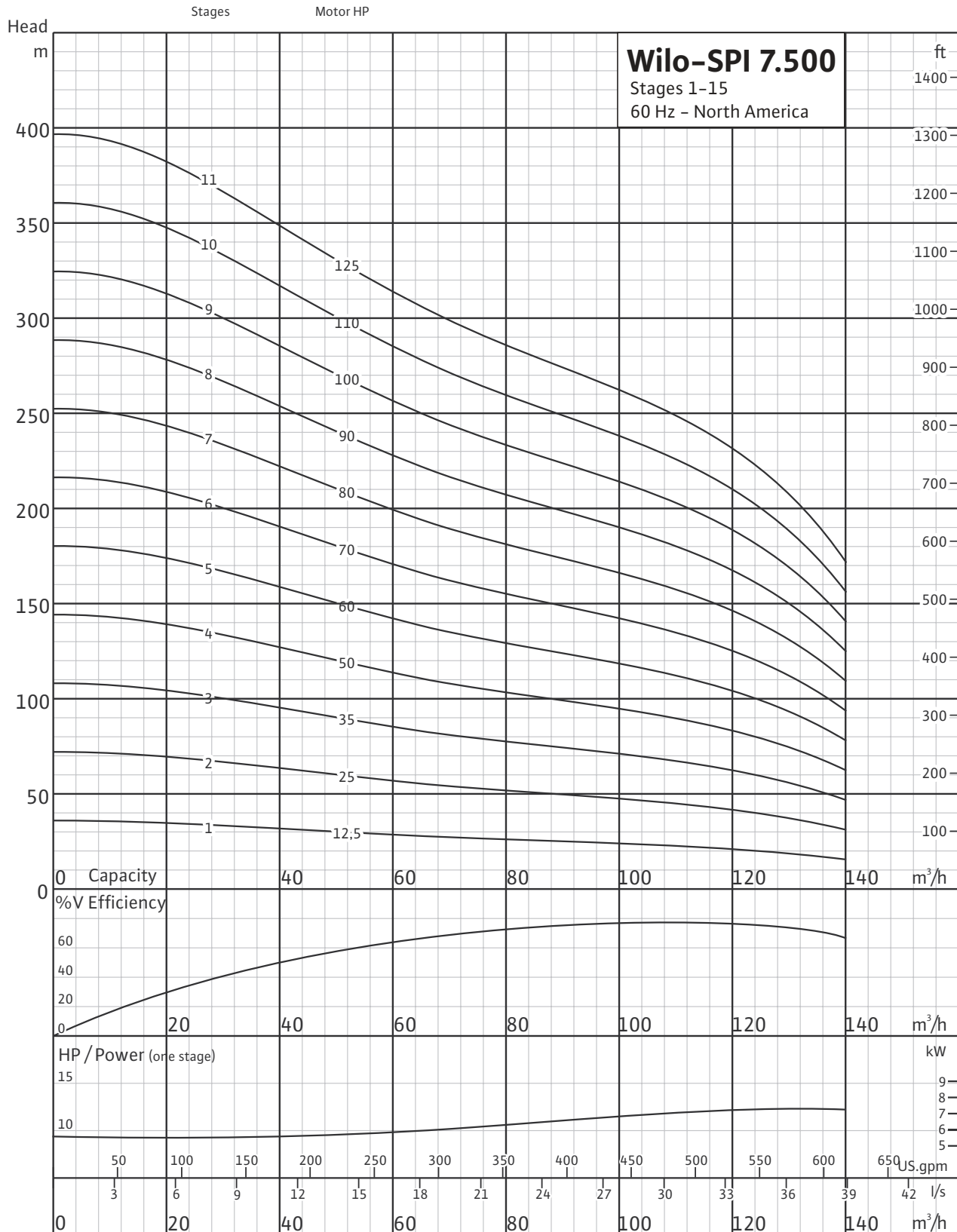


# Wilo-SPI 7.500

## Stainless Steel Submersible Well Pumps



### Stages 1-15

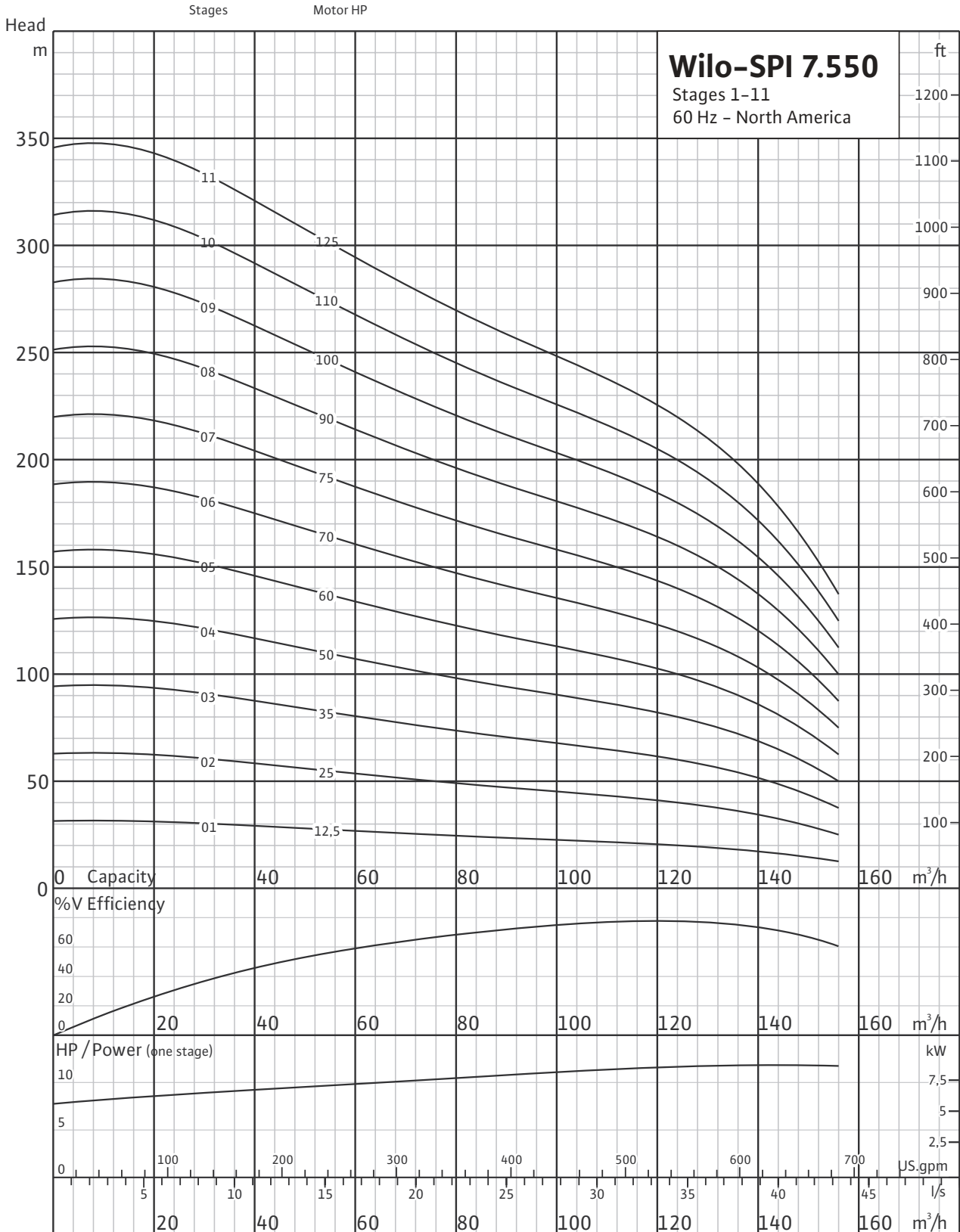


# Wilco-SPI 7.550

Stainless Steel Submersible Well Pumps



## Stages 1-11



Weights and Dimensions

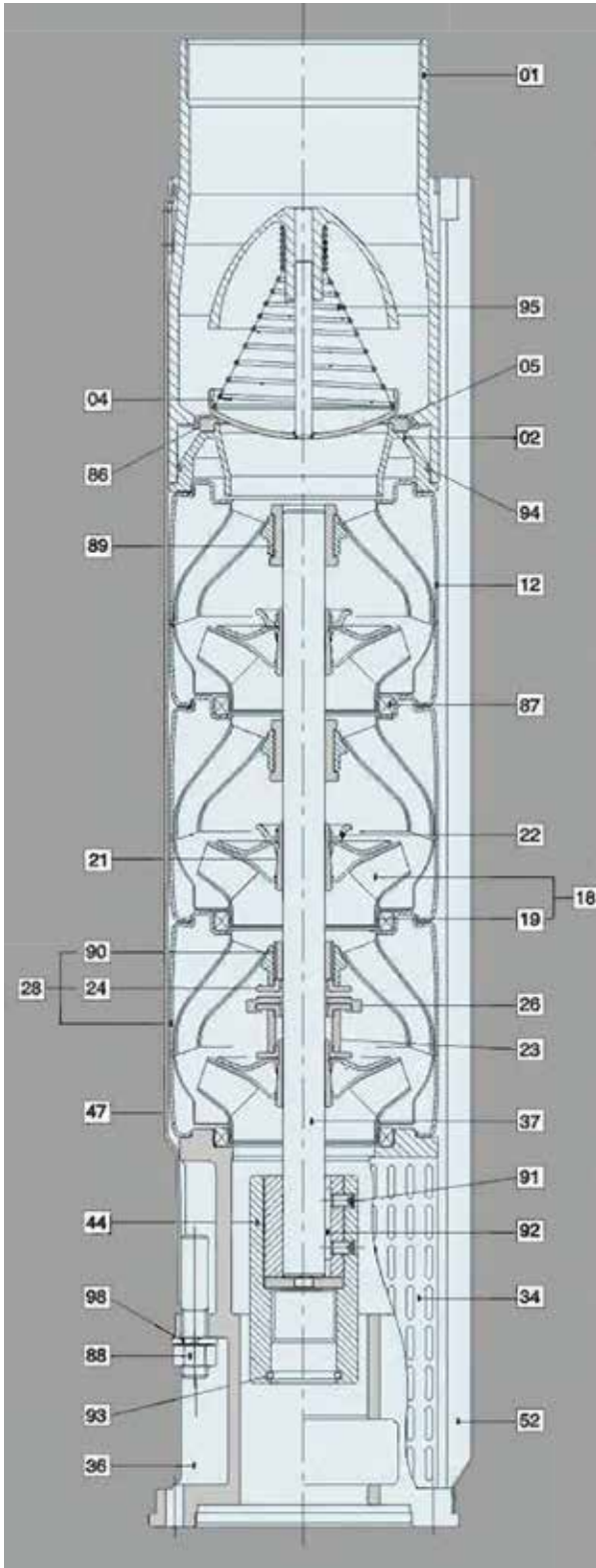
400 GPM									
Model	HP	Dimensions (mm)					Weights (kg)		
		A	B	C	D	E	Complete Unit	Pump End	Motor
<b>SPI 7.400-01</b>	7.5	1249	678	571	172	142	69.5	26	43.5
<b>SPI 7.400-02</b>	15	1550	851	699	172	142	90	30	60
<b>SPI 7.400-03</b>	25	1833	1006	827	172	142	110	34	76
<b>SPI 7.400-04</b>	30	2061/1845	1106/890	955	172	142/172	125/124	38	87/86
<b>SPI 7.400-05</b>	35	2300/2023	1217/940	1083	172	142/172	140/133	42	98/91
<b>SPI 7.400-06</b>	50	2558/2271/2327	1347/1060/1116	1211	172	142/172/192	156/159/184	46	110/113/138
<b>SPI 7.400-07</b>	50	2686/2399/2455	1347/1060/1116	1339	172	142/172/192	160/163/188	50	110/113/138
<b>SPI 7.400-08</b>	60	2606/2668	1139/1201	1467	172	172/192	181/206	54	127/152
<b>SPI 7.400-09</b>	75	2845/2881	1250/1286	1595	172	172/192	196/228	58	138/170
<b>SPI 7.400-10</b>	75	2973/3009	1250/1286	1723	172	172/192	200/232	62	138/170
<b>SPI 7.400-11</b>	90	3217	1366	1851	172	192	252	66	186
<b>SPI 7.400-12</b>	90	3345	1366	1979	172	192	256	70	186
<b>SPI 7.400-13</b>	100	3498	1391	2107	172	192	269	74	195
<b>SPI 7.400-14</b>	125	3771	1536	2235	172	192	290	78	212
<b>SPI 7.400-15</b>	125	3899	1536	2363	172	192	294	82	212

### Weights and Dimensions

500 GPM									
Model	HP	Dimensions (mm)					Weights (kg)		
		A	B	C	D	E	Complete Unit	Pump End	Motor
<b>SPI 7.500-01</b>	10	1371	800	571	172	142	81	26	55
<b>SPI 7.500-02</b>	25	1705	1006	699	172	142	106	30	76
<b>SPI 7.500-03</b>	35	2044/1767	1217/940	827	172	142/172	132/125	34	98/91
<b>SPI 7.500-04</b>	50	2302/2015/2071	1347/1060/1116	955	172	142/172/192	148/151/176	38	110/113/138
<b>SPI 7.500-05</b>	60	2222/2284	1139/1201	1083	172	172/192	169/194	42	127/152
<b>SPI 7.500-06</b>	70	2429/2497	1218/1286	1211	172	172/192	184/216	46	138/170
<b>SPI 7.500-07</b>	80	2680	1341	1339	172	192	235	50	185
<b>SPI 7.500-08</b>	90	2833	1366	1467	172	192	240	54	186
<b>SPI 7.500-09</b>	100	2986	1391	1595	172	192	253	58	195
<b>SPI 7.500-10</b>	110	3194	1471	1723	172	192	272	62	210
<b>SPI 7.500-11</b>	125	3387	1536	1851	172	192	278	66	212
<b>SPI 7.500-12</b>	150	3515	1536	1979	172	192	282	70	212
<b>SPI 7.500-13</b>	150	3643	1536	2107	172	192	286	74	212

Weights and Dimensions

550 GPM									
Model	HP	Dimensions (mm)					Weights (kg)		
		A	B	C	D	E	Complete Unit	Pump End	Motor
SPI 07.550-01	12.5	1371	800	571	172	142	81	26	55
SPI 7.550-02	25	1705	1006	699	172	142	106	30	76
SPI 7.550-03	35	2044/1767	1217/940	827	172	142/172	132/125	34	98/91
SPI 7.550-04	50	2302/2015/2071	1347/1060/1116	955	172	142/172/192	148/151/176	38	110/113/138
SPI 7.550-05	60	2222/2284	1139/1201	1083	172	172/192	169/194	42	127/152
SPI 7.550-06	70	2429/2497	1218/1286	1211	172	172/192	184/216	46	138/170
SPI 7.550-07	75	2680	1341	1339	172	192	235	50	185
SPI 7.550-08	90	2833	1366	1467	172	192	240	54	186
SPI 7.550-09	100	2986	1391	1595	172	192	253	58	195
SPI 7.550-10	110	3194	1471	1723	172	192	272	62	210
SPI 7.550-11	125	3387	1536	1851	172	192	278	66	212
SPI 7.550-12	125	3515	1536	1979	172	192	282	70	212
SPI 7.550-13	150	3643	1536	2107	172	192	286	74	212



Pos.	Components	Material	Standard
01	Discharge	Stainless Steel	304
02	Lower Valve Seat Retainer	Stainless Steel	304
04	Valve Cup	Stainless Steel	304
05	Upper Valve Seat Retainer	Stainless Steel	304
12	Diffuser	Stainless Steel	304
18	Impeller	Stainless Steel	304
19	Ring of Impeller	Stainless Steel	304
21	Split Cone	Stainless Steel	304
22	Split Cone Nut	Stainless Steel	304
23	Nut for Stop Ring	Stainless Steel	304
24	Stop Ring	Stainless Steel	304
26	Spacing Washer for Stop Ring	Carbon/Graphite/PTFE	
28	Bottom Diffuser	Stainless Steel	304
34	Strainer	Stainless Steel	304
36	Suction Interconnector	Stainless Steel	304
37	Pump Shaft	Stainless Steel	431
44	Coupling	Stainless Steel	304
47	Strap	Stainless Steel	304
52	Cable Guard	Stainless Steel	304
86	Valve Seat	NBR	
87	Neck Ring	SUS304+NBR	
88	Nut	Stainless Steel	304
89	Bearing	NBR	
90	Bearing	NBR+SUS304	
91	Screw	Stainless Steel	304
92	Key	Stainless Steel	304
93	O-Ring	NBR	
94	O-Ring	NBR	
95	Spring	Stainless Steel	304
98	Spring Washer	Stainless Steel	304

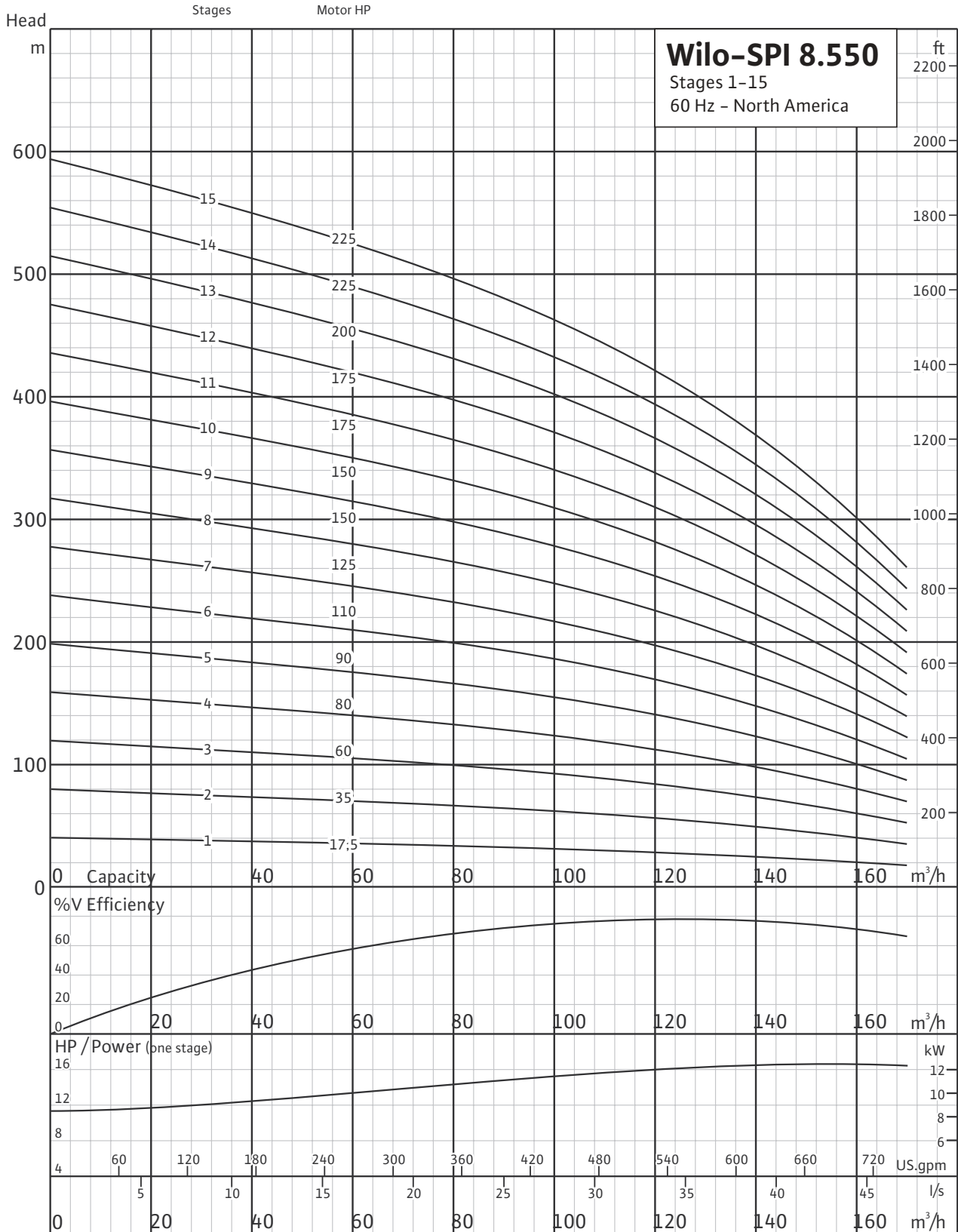
\*AISI 316 Stainless Steel Pumps are available on request.

# Wilo-SPI 8.550

## Stainless Steel Submersible Well Pumps



### Stages 1-15

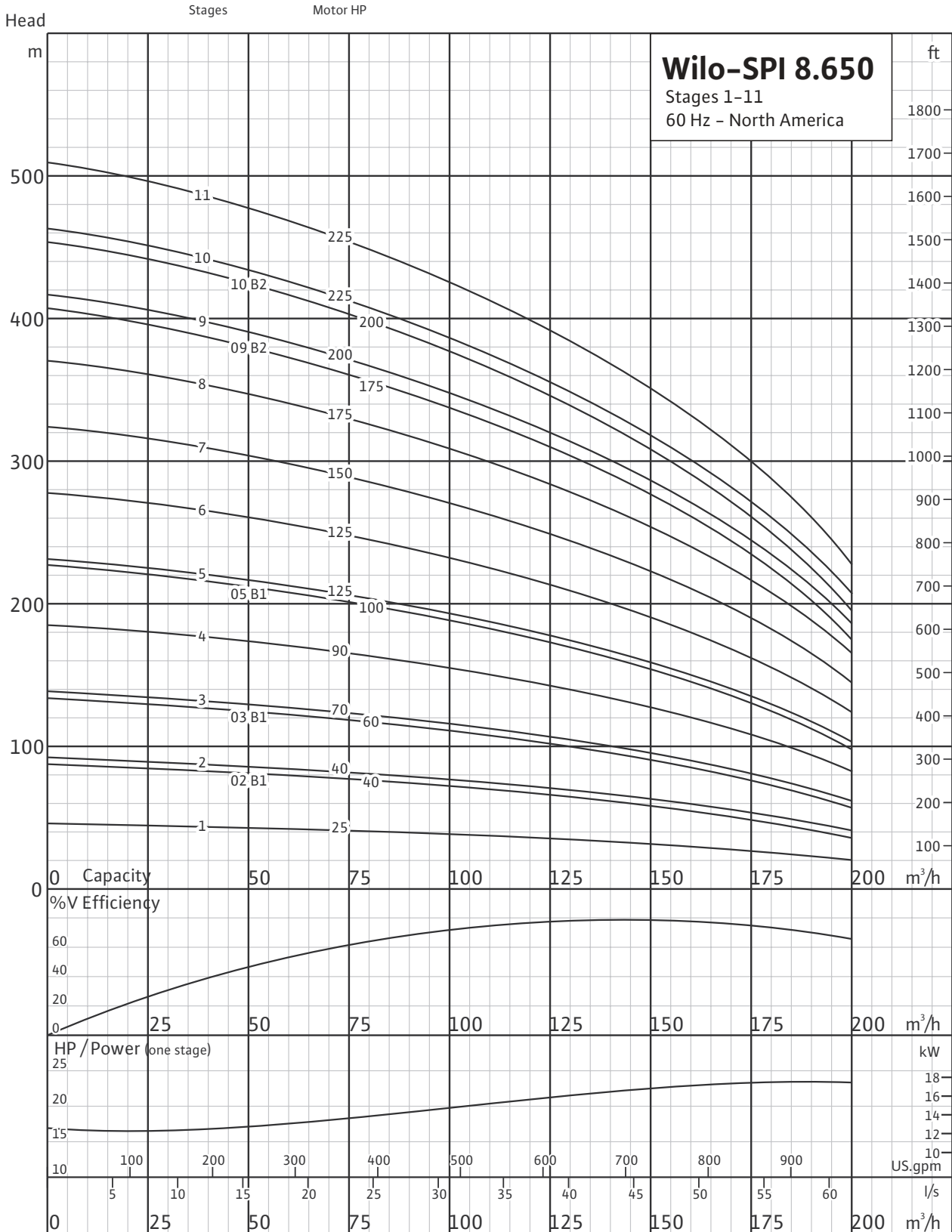


# Wilo-SPI 8.650

Stainless Steel Submersible Well Pumps



## Stages 1-11



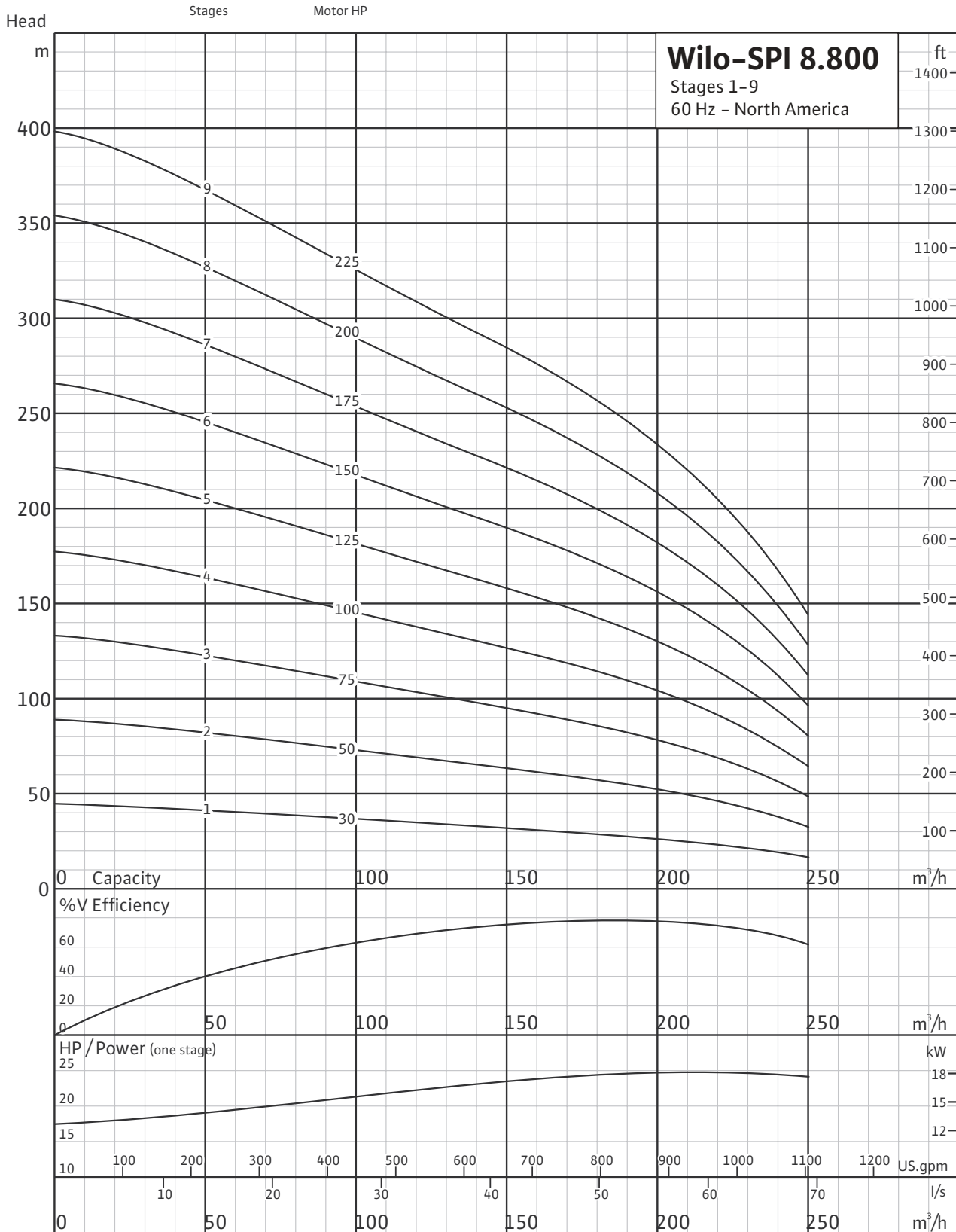


# Wilo-SPI 8.800

Stainless Steel Submersible Well Pumps



## Stages 1-9



### Weights and Dimensions

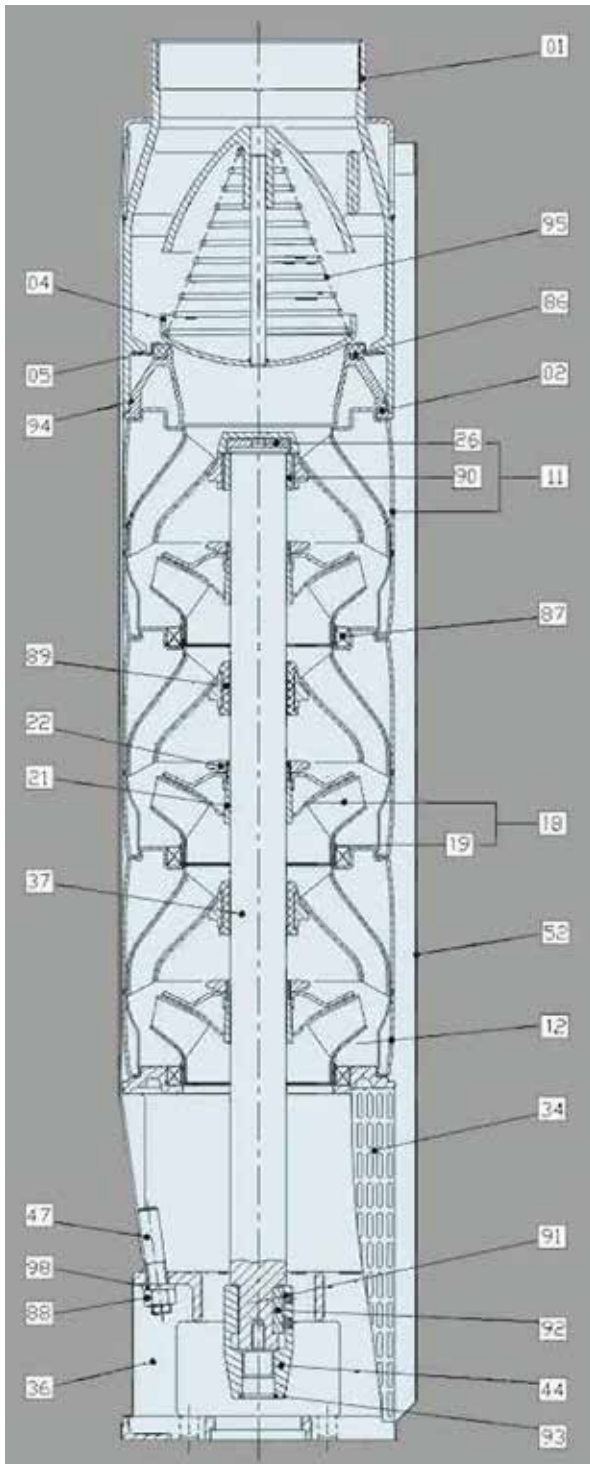
550 GPM									
Model	HP	Dimensions (mm)					Weights (kg)		
		A	B	C	D	E	Complete Unit	Pump End	Motor
<b>SPI 8.550-01</b>	15	1597	911	686	213	142	97	32	65
<b>SPI 8.550-02</b>	35	2059/1782	1217/940	842	213	142/172	136/129	38	98/91
<b>SPI 8.550-03</b>	50	2344/2057/2113	1347/1060/1116	997	213	142/172/192	155/158/183	45	110/113/138
<b>SPI 8.550-04</b>	60	2292/2354	1139/1201	1153	213	172/192	178/203	51	127/152
<b>SPI 8.550-05</b>	75	2650	1341	1309	213	192	242	57	185
<b>SPI 8.550-06</b>	90	2831	1366	1465	213	192	250	64	186
<b>SPI 8.550-07</b>	110	3091	1471	1620	213	192	280	70	210
<b>SPI 8.550-08</b>	125	3312	1536	1776	213	192	288	76	212
<b>SPI 8.550-09</b>	150	3468	1536	1932	213	247	300	88	272
<b>SPI 8.550-10</b>	175	3623	1536	2087	213	247	308	96	312
<b>SPI 8.550-11</b>	175	3779	1536	2243	213	247	314	102	384

Weights and Dimensions

650 GPM									
Model	HP	Dimensions (mm)					Weights (kg)		
		A	B	C	D	E	Complete Unit	Pump End	Motor
SPI 8.650-01	25	1692	1006	686	213	142	108	32	76
SPI 8.650-02	40	2089/1822/1898	1247/980/1056	842	213	142/172/192	142/142/168	39	103/103/129
SPI 8.650-03	60	2136/2198	1139/1201	997	213	172/192	172/197	45	127/152
SPI 8.650-04	70	2215/2283	1218/1286	997	213	172/192	183/215	45	138/170
SPI 8.650-05	90	2519	1366	1153	213	192	238	52	186
SPI 8.650-06	100	2700	1391	1309	213	192	253	58	195
SPI 8.650-07	125	2845	1536	1309	213	192	270	58	212
SPI 8.650-08	150	3001	1536	1465	213	247	277	65	251
SPI 8.650-09	175	3200	1620	1620	213	247	354	71	283
SPI 8.650-10	200	3400	1720	1776	213	247	385	78	307
SPI 8.650-11	225	3400	1720	1932	213	247	412	84	328

### Weights and Dimensions

800 GPM									
Model	HP	Dimensions (mm)					Weights (kg)		
		A	B	C	D	E	Complete Unit	Pump End	Motor
<b>SPI 8.800-01</b>	30	1792/1576	1106/890	686	226	142/172	121/120	34	87/86
<b>SPI 8.800-02</b>	50	2189/1902/1958	1347/1060/1116	842	226	142/172/192	150/153/178	40	110/113/138
<b>SPI 8.800-03</b>	75	2247/2283	1250/1286	997	226	172/192	185/217	47	138/170
<b>SPI 8.800-04</b>	100	2544	1391	1153	226	192	248	53	195
<b>SPI 8.800-05</b>	125	2845	1536	1309	226	192	272	60	212
<b>SPI 8.800-06</b>	150	3001	1590	1465	213	247	277	65	251
<b>SPI 8.800-07</b>	175	3200	1620	1620	213	247	354	71	283
<b>SPI 8.800-08</b>	200	3400	1720	1776	213	247	385	78	307
<b>SPI 8.800-09</b>	225	3400	1720	1932	213	247	412	84	328



Pos.	Components	Material	Standard
01	Discharge	Stainless Steel	304
02	Lower Valve Seat Retainer	Stainless Steel	304
04	Valve Cup	Stainless Steel	304
05	Upper Valve Seat Retainer	Stainless Steel	304
11	Upper Diffuser	Stainless Steel	304
+26	Spacing Washer For Stop Ring	Carbon Fiber +MoS2+PTFE	
+90	Upper Bearing	SUS304+NBR	
12	Diffuser	Stainless Steel	304
18	Impeller	Stainless Steel	304
18	Impeller - A	Stainless Steel	304
+19	Ring of Impeller	Stainless Steel	304
21	Split Cone	Stainless Steel	304
22	Split Cone Nut	Stainless Steel	304
34	Strainer - one lead	Stainless Steel	304
34	Strainer - two leads	Stainless Steel	304
36	Suction Interconnector - 6"	Stainless Steel	304
36	Suction Interconnector - 8"	Stainless Steel	304
37	Shaft	Stainless Steel	431
44	Coupling - 6"	Stainless Steel	304
44	Coupling - 8"	Stainless Steel	304
47	Strap	Stainless Steel	304
52	Cable Guard	Stainless Steel	304
86	Valve Seat	NBR	70
87	Neck Ring	PPS+NBR	
88	Nut	Stainless Steel	304
89	Bearing	NBR	70
91	Screw - 6"	Stainless Steel	304
91	Screw - 8"	Stainless Steel	304
92	Key - 6"	Stainless Steel	304
92	Key - 8"	Stainless Steel	304
93	O-Ring - 6"	NBR	70
93	O-Ring - 8"	NBR	70
94	O-Ring	NBR	70
95	Spring	Stainless Steel	304
98	Spring Washer	Stainless Steel	304

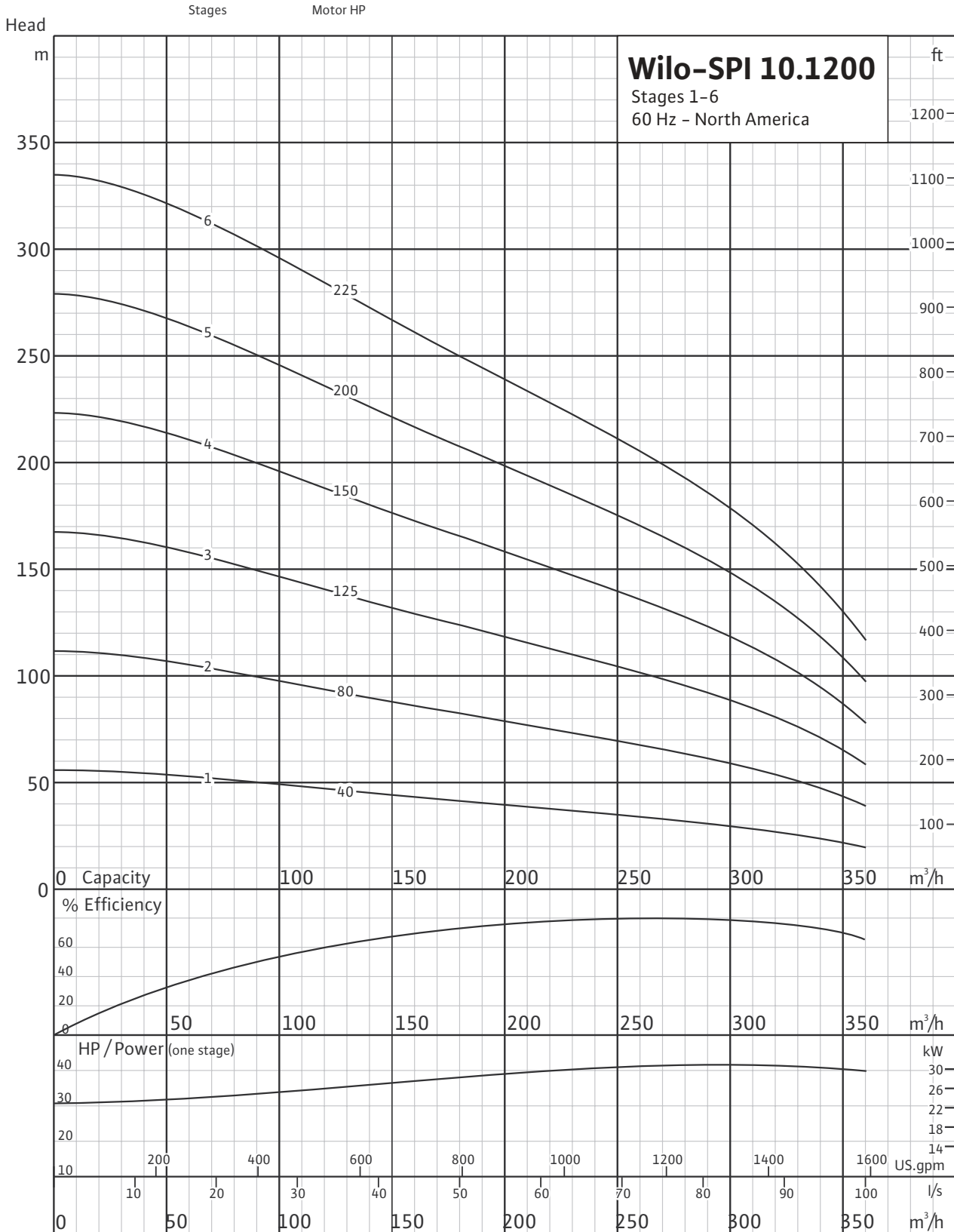
\*AISI 316 Stainless Steel Pumps are available on request.

# Wilo-SPI 10.1200

Stainless Steel Submersible Well Pumps



## Stages 1-6



Weights and Dimensions

1200 GPM									
Model	HP	Dimensions (mm)					Weights (kg)		
		A	B	C	D	E	Complete Unit	Pump End	Motor
<b>SPI 10.1200-01</b>	40	2041/1774/1850	1247/980/1056	794	247	142/172/192	147/147/173	44	103/103/129
<b>SPI 10.1200-02</b>	80	2311	1341	970	247	192	240	55	185
<b>SPI 10.1200-03</b>	125	2683	1536	1147	247	192	278	66	212
<b>SPI 10.1200-04</b>	150	2913	1590	1323	247	247	327	76	251
<b>SPI 10.1200-05</b>	175	3119	1620	1499	247	247	370	87	283
<b>SPI 10.1200-06</b>	250	3395	1720	1675	247	247	405	98	307
<b>SPI 10.1200-07</b>	250	3571	1720	1851	247	247	437	109	328

Electrical Data

7" R Series Motors

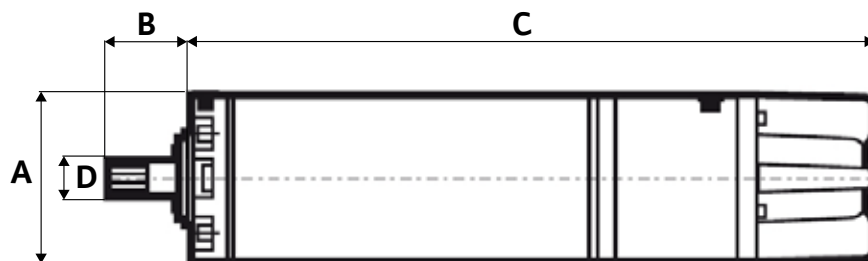
HP	kW	PH (~)	Voltage	FL Amps	SF Amps	Start Amps	Cos $\Phi$	Eff.	Article Number
30	22	3	460	38.2	43.9	202.5	0.87	83%	2761155
40	30	3	460	52.1	59.9	273.1	0.88	84%	2761156
50	37	3	460	61.4	70.6	325	0.9	86%	2761157
60	45	3	460	74.7	85.9	379	0.9	85%	2761158

8" R Series Motors

HP	kW	PH (~)	Voltage	FL Amps	SF Amps	Cos $\Phi$	Eff.	Article Number
40	30	3	460	51	58.7	0.89	83%	2761163
50	37	3	460	61.4	70.6	0.89	84%	2761164
60	45	3	460	74.8	86	0.89	85%	2761165
75	52	3	460	90.2	103.7	0.9	83%	2761166
100	75	3	460	123.1	141.6	0.9	85%	2761167
125	92	3	460	152.8	175.7	0.89	85%	2761168

10" R Series Motors

HP	kW	PH (~)	Voltage	FL Amps	SF Amps	Cos $\Phi$	Eff.	Article Number
150	112	3	460	180.5	207.6	0.91	83%	2711903
175	130	3	460	207	238	0.92	84%	2761176
200	150	3	460	236	271.4	0.92	85%	2711904
250	186	3	460	297	341.6	0.92	83%	2711905



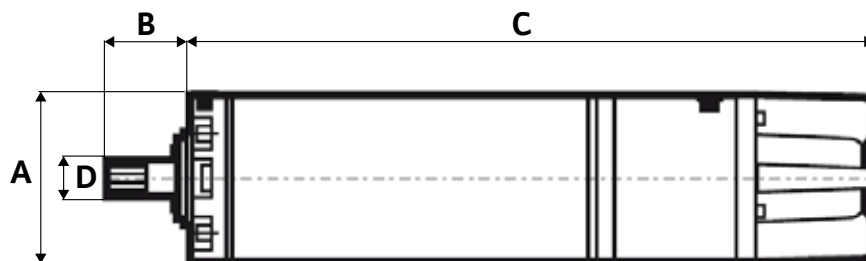


## Dimensions

7" R Series Motors								
HP	kW	PH	A	B	C	D	Weight (lbs)	Article Number
150	112	3	460	180.5	207.6	0.91	83%	2711903
175	130	3	460	207	238	0.92	84%	2761176
200	150	3	460	236	271.4	0.92	85%	2711904
250	186	3	460	297	341.6	0.92	83%	2711905

8" R Series Motors								
HP	kW	PH	A	B	C	D	Weight (lbs)	
40	30	3	7.48 in	4 in	41.6 in	1.5 in	279.4	
50	37	3	7.48 in	4 in	43.9 in	1.5 in	292.6	
60	45	3	7.48 in	4 in	47.3 in	1.5 in	308	
75	52	3	7.48 in	4 in	50.6 in	1.5 in	334.4	
100	75	3	7.48 in	4 in	54.7 in	1.5 in	418	
125	92	3	7.48 in	4 in	60.5 in	1.5 in	457.6	

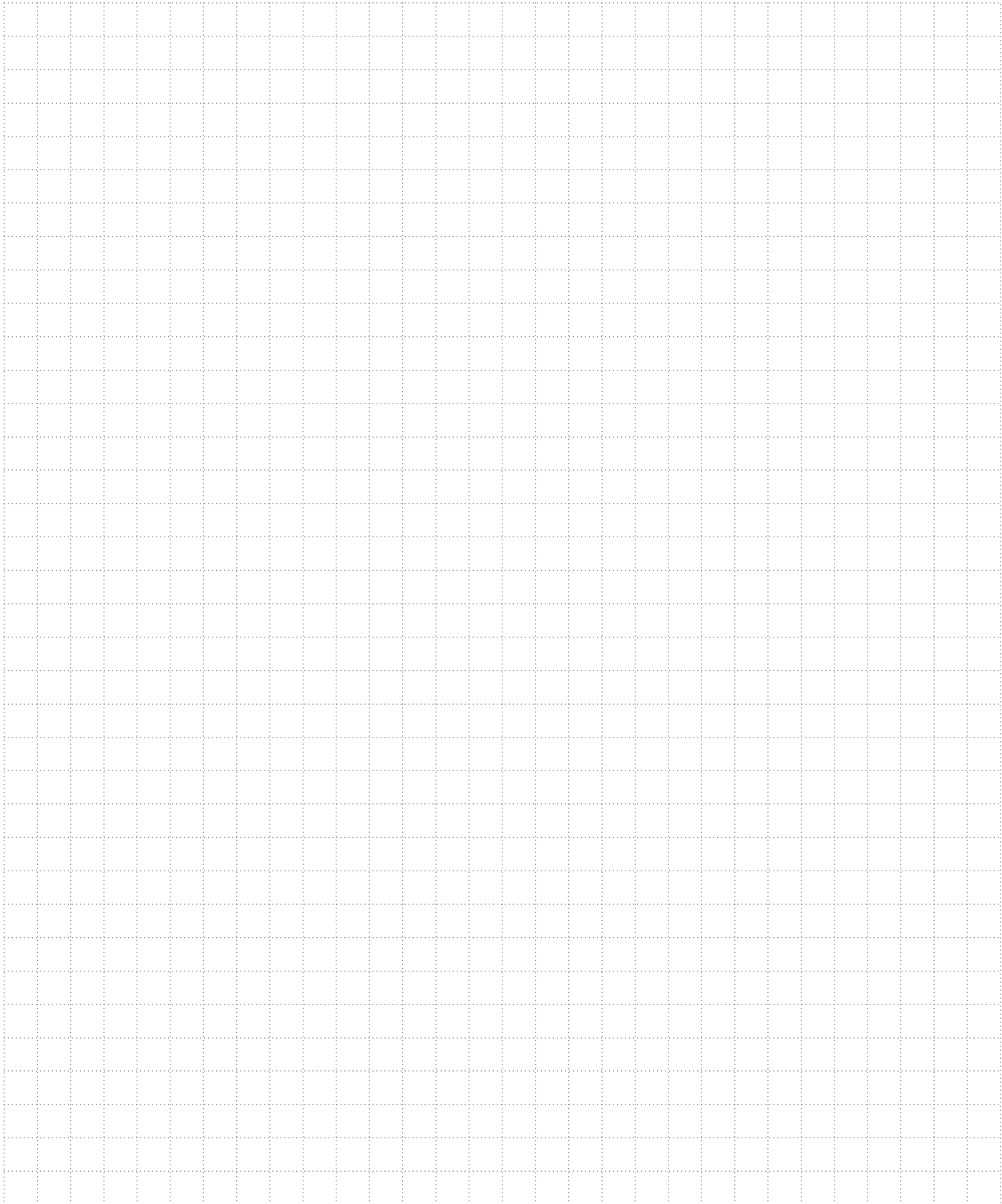
10" R Series Motors								
HP	kW	PH	A	B	C	D	Weight (lbs)	
150	112	3	9.1 in	4 in	59.4 in	1.5 in	657.8	
175	130	3	9.1 in	4 in	63.4 in	1.5 in	721.6	
200	150	3	9.1 in	4 in	68.5 in	1.5 in	809.6	
250	186	3	9.1 in	4 in	71.6 in	1.5 in	959.2	



## Wire Sizing

6"–7"–8"–10" 3~ 60 Hz

Motor Rating		Copper Wire Size												
Voltage	HP	14	12	10	8	6	4	2	0	00	000	0000	250	350
208	5		170'	280'	440'	690'	1080'	1660'	2490'					
	7½			200	310	490	770	1180	1770	2170'	2600'			
	10				230	370	570	880	1330	1640	1970			
	15					250	390	600	910	1110	1340			
	10						300	460	700	860	1050	1270'		
	25							370	570	700	840	1030		
	30							310	470	580	700	850		
230	5		230'	370'	590'	920'	1430'	2190'						
	7½			260	420	650	1020	1560	2340'	2870'				
	10				310	490	760	1170	1760	2160	2610'			
	15					330	520	800	1200	1470	1780			
	10						400	610	930	1140	1380	1450'		
	25						320	500	750	920	1120	1170		
	30							410	620	760	930	970		
460	5	590'	950'	1500'	2360'	3700'	5750'							
	7½	420	680	1070	1690	2640	4100	6260'						
	10	310	500	790	1250	1960	3050	4680						
	15			540	850	1340	2090	3200	4810'					
	10			410	650	1030	1610	2470	3730					
	25				530	830	1300	1990	3010	3700'				
	30				430	680	1070	1640	2490	3060	3700'			
	40						790	1210	1830	2250	2710	3290'	3730'	
	50						640	980	1480	1810	2190	2650	3010	3830'
	60							830	1250	1540	1850	2240	2540	3240
	75								1030	1260	1520	1850	2100	2700
	100									940	1130	1380	1560	2010
	125										890	1000	1220	1560
	150												1050	1340
	200													1030
250														990



**Wilo USA LLC**  
+ 1-888-945-6872  
www.wilo-usa.com  
groundwater@wilo-usa.com

**Wilo USA LLC**  
86 Genesis Parkway  
Thomasville, GA 31792

