
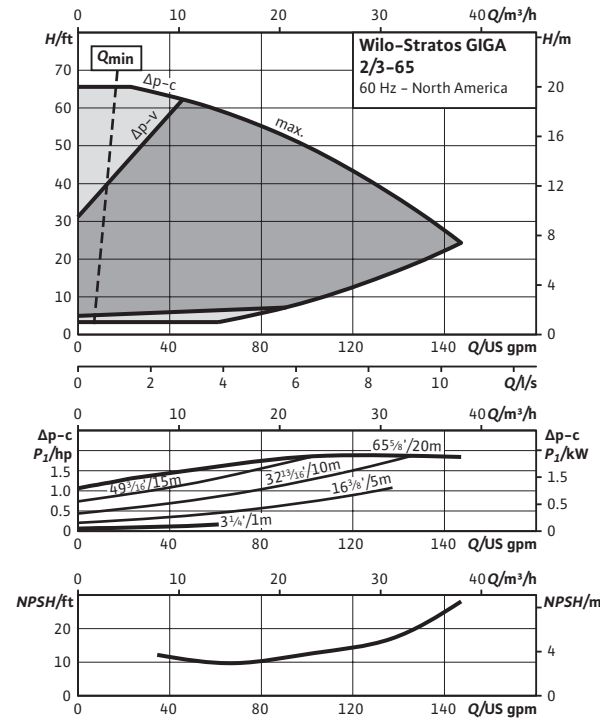
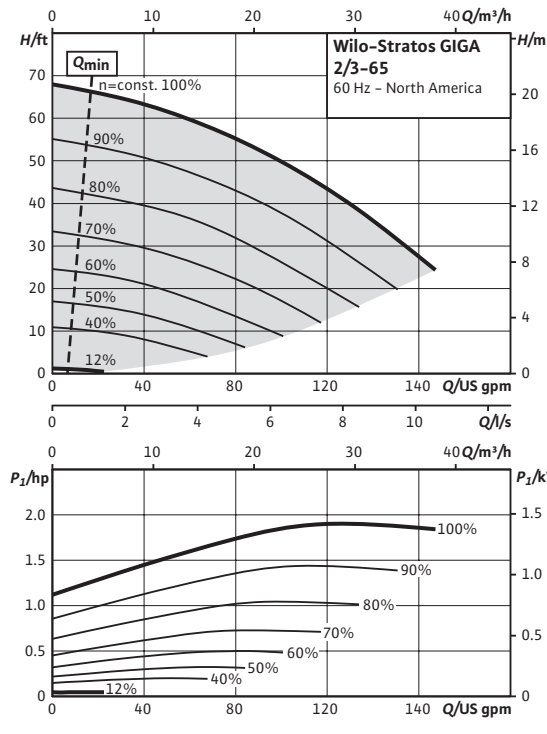


# Submittal Data Sheet

## Wilo-Stratos GIGA - High-Efficiency In-Line Pumps



| Wilo-Stratos GIGA 2/3-65  |                          |               |      |              |       |       |         |
|---|--------------------------|---------------|------|--------------|-------|-------|---------|
|  |                          | Project:      |      |              |       |       |         |
|   |                          | Engineer:     |      |              |       |       |         |
|   |                          | Contractor:   |      |              |       |       |         |
|   |                          | Submitted By: |      |              | Date: |       |         |
|   |                          | Approved By:  |      |              | Date: |       |         |
| Tag #   | Model #                  | Flow          | Head | Control Mode | Cycle | Phase | Voltage |
|   | Wilo-Stratos GIGA 2/3-65 |               |      |              |       | 3     | 460     |



| Technical Data         |  |
|------------------------|--|
| Liquid Temp Range      | -4°F to 248°F (-20°C to +120°C)                                      |
| Fluid Capability       | Water<br>50/50 Water-Glycol Mixtures                                 |
| Max Operating Pressure | 232 PSI<br>248°F (water only)<br>194°F (50% propylene)               |
| Mains Voltage          | 3- 380-480V ±10% 50/60Hz   |
| Protection Class       | IP 55, Class F Insulation  |
| Ambient Temp Range     | 32°F to 104°F (0°C to 40°C)  |
| Max Relative Humidity  | 32°F to 86°F (0°C to 30°C): 90%<br>87°F to 104°F (31°C to 40°C): 60% |
| Sound Level            | < 74 dBA   |

| Materials of Construction |   |
|---------------------------|---|
| Pump Volute               | Cast Iron Cataphoresis Coated (ASTM A48 / EN-GJL-250) |
| Impeller                  | Composite (PPS-GF40)<br>Integral Stainless Inlet      |
| Shaft                     | Stainless Steel (AISI 420 / 1.4122)                   |
| Mechanical Seal           | SiC/SiC-NBR (Q7Q7X4GG)                                |

| IR Module Selection |                      |                |
|---------------------|----------------------|----------------|
| Module 1            | Module               | Article Number |
|                     | BACnet / Dual Pump   | 2097811        |
|                     | LONworks / Dual Pump | 2022530        |
|                     | MODBus               | 2097809        |
|                     | None                 | None           |

| Applications                     |                            |
|----------------------------------|----------------------------|
| • Hot Water Heating Systems      | • Closed Cooling Circuits  |
| • Industrial Circulation Systems | • Air-conditioning Systems |
| • Solar                          | • Geothermal               |

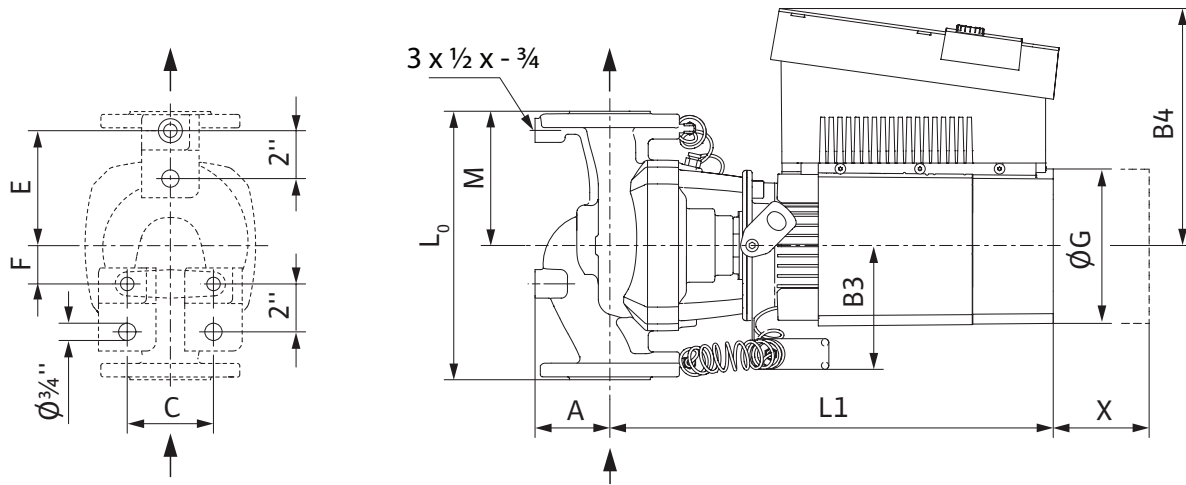
Approval Stamp

# Submittal Data Sheet

Wilo-Stratos GIGA - High-Efficiency In-Line Pumps



## Dimensions & Weights

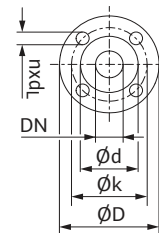


## Dimensions and Weights

| Model                          | Dimensions - Inches (mm) |            |            |            |   |             |                                       |  |                                       |  |   |   |             |  | Weight<br>lbs (kg) |
|--------------------------------|--------------------------|------------|------------|------------|---|-------------|---------------------------------------|--|---------------------------------------|--|---|---|-------------|--|--------------------|
|                                | I <sub>0</sub>           | A          | B1         | B2         | B3                                      | B4          | C                                     | E                                      | F                                     | ØG                                     | H                                       | L1                                      | M           | X                                      |                    |
| Wilo-Stratos<br>GIGA<br>2/3-65 | 12<br>(305)              | 3½<br>(89) | 3½<br>(89) | 3½<br>(89) | 5 <sup>3</sup> / <sub>16</sub><br>(129) | 9¾<br>(248) | 3 <sup>5</sup> / <sub>8</sub><br>(92) | 4 <sup>7</sup> / <sub>8</sub><br>(124) | 1 <sup>5</sup> / <sub>8</sub><br>(41) | 6 <sup>5</sup> / <sub>8</sub><br>(168) | 10 <sup>7</sup> / <sub>8</sub><br>(277) | 18 <sup>1</sup> / <sub>8</sub><br>(460) | 5½<br>(140) | 8 <sup>7</sup> / <sub>8</sub><br>(225) | 93<br>(42)         |

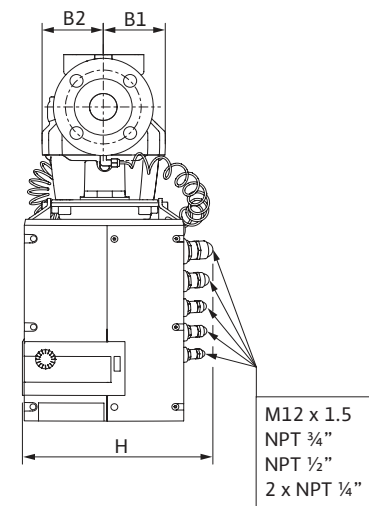
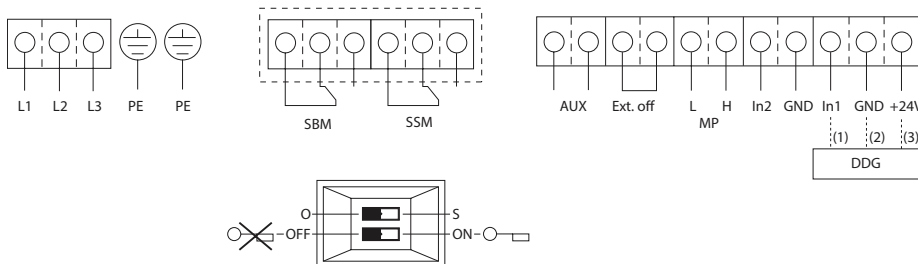
## Flange Dimensions - 125#ANSI

| Dimensions - Inches (mm) |             |   |             |                     |
|--------------------------|-------------|---|-------------|---------------------|
| Dia.                     | ØD          | Ød                                      | Øk          | n x Ød <sub>L</sub> |
| 2"                       | 6½<br>(165) | 4 <sup>3</sup> / <sub>16</sub><br>(106) | 4¾<br>(121) | 4 x ¾<br>(4 x 19)   |



## EC Motor Data (Single Motor Operation)

| Model                    | P <sub>2</sub> Rated | P <sub>1</sub> | Speed    | FLA    |
|--------------------------|----------------------|----------------|----------|--------|
|                          | hp                   | kW             | RPM      | 3~480V |
| Wilo-Stratos GIGA 2/3-65 | 2                    | 1.5            | 500-3920 | 1.8    |



Wilo USA

T +1 888 945 6872  
F +1 888 945 6873  
www.wilo-usa.com  
info@wilo-usa.com

Wilo Canada Inc.

T +1 866 945 6236  
F +1 403 277 9456  
www.wilo-canada.com  
info@wilo-canada.com

Wilo Mexico

T +52 55 5586 3209  
F +52 1 55 5413 4165  
www.wilo-mexico.com.mx  
info@wilo.com.mx