

# Submittal Data Sheet

## Wilo Stratos Z - High Efficiency Circulators



### Stratos Z 1.25x3-35



Project: \_\_\_\_\_

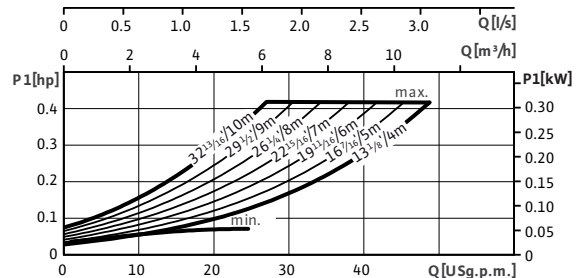
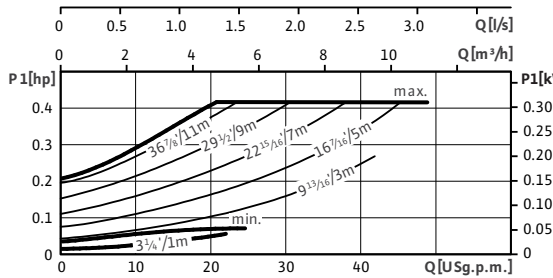
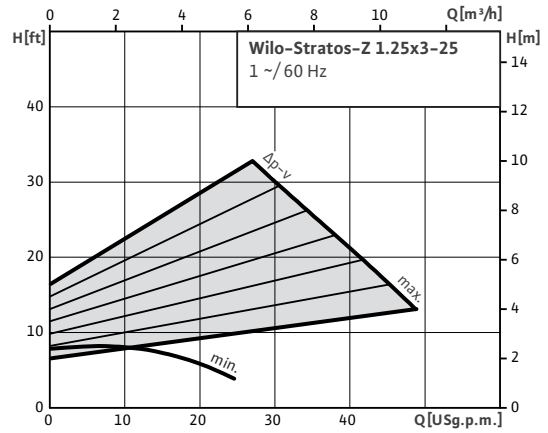
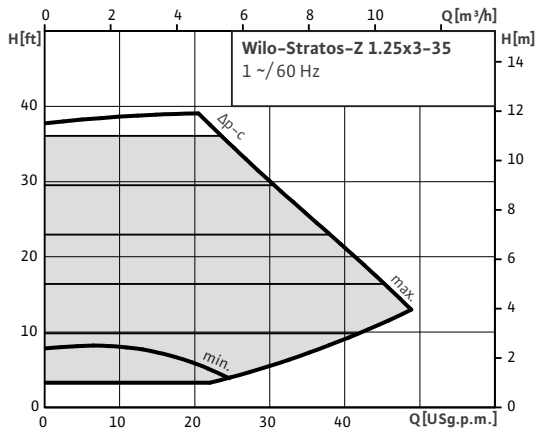
Engineer: \_\_\_\_\_

Contractor: \_\_\_\_\_

Submitted By: \_\_\_\_\_ Date: \_\_\_\_\_

Approved By: \_\_\_\_\_ Date: \_\_\_\_\_

Tag #	Model #	Flow	Head	Control Mode	Cycle	Phase	Voltage
	Stratos Z 1.25x3-35				60Hz	1	230



#### Technical Data

Liquid Temp Range	14°F to 230°F (-10°C to 110°C)
Max Temperature	104°F (40°C)
Min. Suction Pressure (122°F)	10.0 PSI
Min. Suction Pressure (203°F)	21.3 PSI
Min. Suction Pressure (230°F)	32.7 PSI

#### Materials of Construction

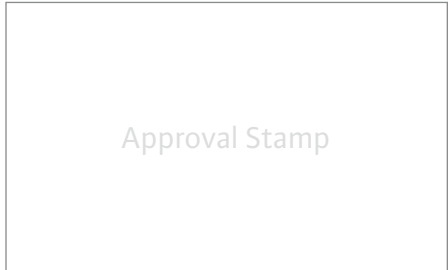
Pump Volute	Stainless steel
Impeller	Composite (PPS-40% GF)
Shaft	Stainless Steel (X39CrMo17-1)
Bearing	Carbon, synthetic resin impregnated

#### IR Module Selection

Module 1	Module
	BACnet / Dual Pump
	LONworks / Dual Pump
	SBM Run Signal / Ext. Off / Dual Pump
	SBM Run Signal / 0-10v / Dual Pump
	Ext. Min / 0-10v / Dual Pump
	Ext. Off / 0-10v / Dual Pump
	None

#### Applications

- Heating Systems
- Cooling Circuits
- Air Conditioning
- Industrial Circulation
- Solar Systems
- Geothermal Systems

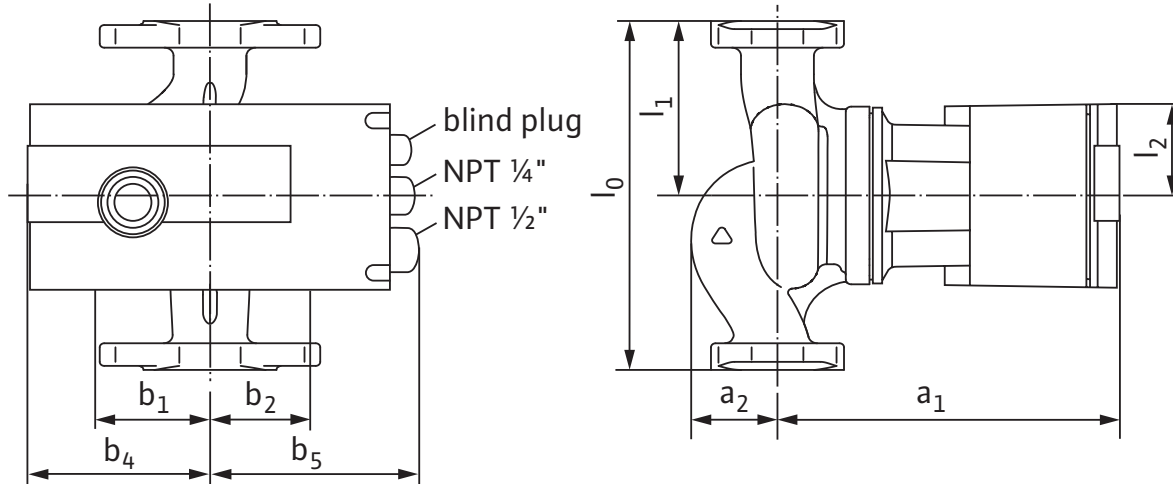


# Submittal Data Sheet

Wilo Stratos Z - High Efficiency Circulators



## Dimensions & Weights

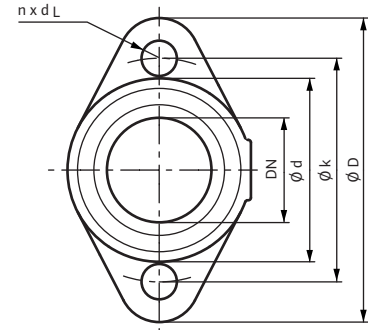


## Dimensions and Weights

Model	Dimensions - Inches (mm)									Weight - lbs (kg)
	$l_0$	$l_1$	$l_2$	$a_1$	$a_2$	$b_1$	$b_2$	$b_4$	$b_5$	
Stratos Z 1.25x3-35	8½	4¼	2 <sup>3</sup> / <sub>16</sub>	7 <sup>15</sup> / <sub>16</sub>	2 <sup>1</sup> / <sub>16</sub>	2 <sup>3</sup> / <sub>8</sub>	2 <sup>3</sup> / <sub>16</sub>	4 <sup>3</sup> / <sub>16</sub>	5¾	13.23
	(216)	(108)	(55)	(201)	(52)	(61)	(55)	(106)	(146)	(6.0)

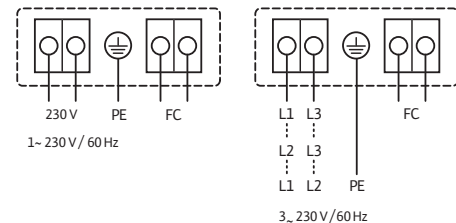
## Flange Dimensions

Dimensions - Inches (mm)				
Dia.	$\phi D$	$\phi d$	$\phi k$	$n \times d_L$
1¼"	4¾	2 <sup>7</sup> / <sub>8</sub>	3½	2 x <sup>9</sup> / <sub>16</sub>
	(121)	(73)	(89)	(2 x 14)



## ECM Motor Data

Model	hp	Speed	Watts	FLA	FLA
		RPM	W	1~230V	3~230V
Stratos Z 1.25x3-35	0.268	1600-4800	16-310	0.16-1.37	0.16-1.37



WILO USA LLC

Tel: (888) 945-6872 Web: [www.wilo-usa.com](http://www.wilo-usa.com)  
 Fax: (888) 945-6873 Email: [info@wilo-usa.com](mailto:info@wilo-usa.com)

WILO Canada Inc.

Tel: (866) 945-6236 Web: [www.wilo-canada.com](http://www.wilo-canada.com)  
 Fax: (403) 277-9456 Email: [info@wilo-canada.com](mailto:info@wilo-canada.com)

WILO Mexico

Tel: +52 55 5586 3209 Web: [www.wilo-mexico.com.mx](http://www.wilo-mexico.com.mx)  
 Fax: +52 1 55 5413 4165 Email: [info@wilo.com.mx](mailto:info@wilo.com.mx)