

Submittal Data Sheet

Wilco Stratos - High Efficiency Circulators

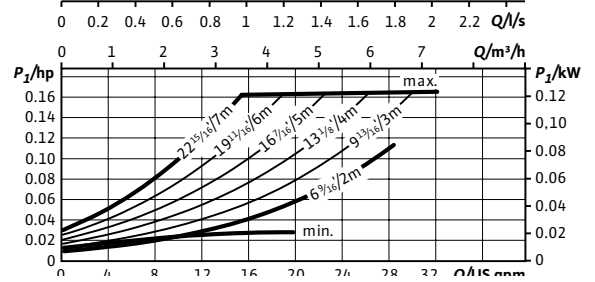
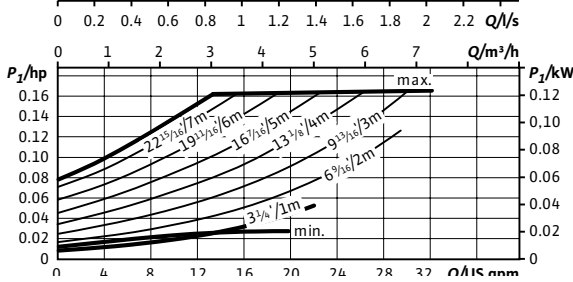
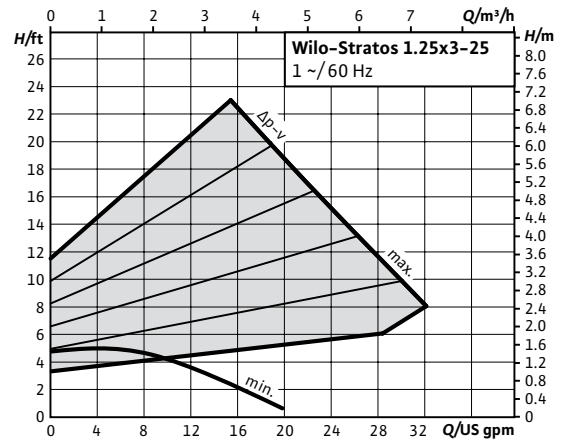
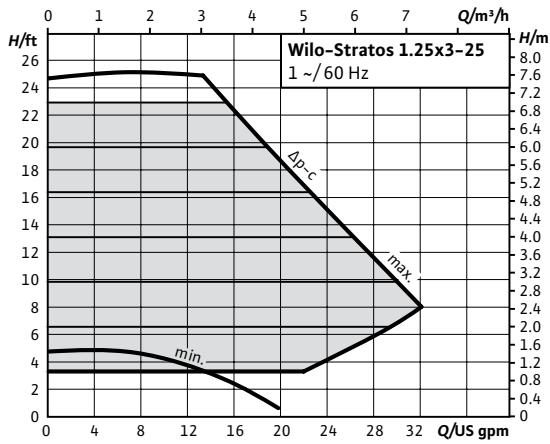


Stratos 1.25x3-25



Project:	
Engineer:	
Contractor:	
Submitted By:	Date:
Approved By:	Date:

Tag #	Model #	Flow	Head	Control Mode	Cycle	Phase	Voltage
	Stratos 1.25x3-25				60Hz	1	230



Technical Data

Liquid Temp Range	14°F to 230°F (-10°C to 110°C)
Max Temperature	104°F (40°C)
Min. Suction Pressure (122°F)	4.3 PSI
Min. Suction Pressure (203°F)	14.2 PSI
Min. Suction Pressure (230°F)	22.8 PSI

Materials of Construction

Pump Volute	Grey Cast Iron (EN-GJL-250)
Impeller	Engineered Composite (PPS - 40% GF)
Shaft	Stainless Steel (X46Cr13)
Bearing	Carbon, Metal Impregnated

IR Module Selection

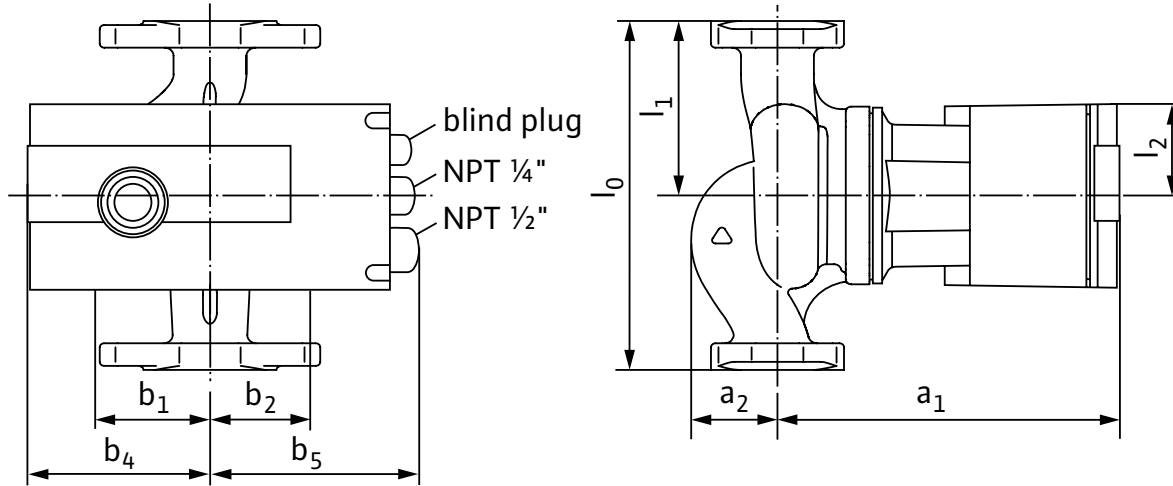
Module 1	Module
	BACnet / Dual Pump
	LONworks / Dual Pump
	SBM Run Signal / Ext. Off / Dual Pump
	SBM Run Signal / 0-10v / Dual Pump
	Ext. Min / 0-10v / Dual Pump
	Ext. Off / 0-10v / Dual Pump
	None

Applications

• Heating Systems	• Cooling Circuits
• Air Conditioning	• Hydronic Heating & Cooling
• Solar Systems	• Geothermal Systems



Dimensions & Weights

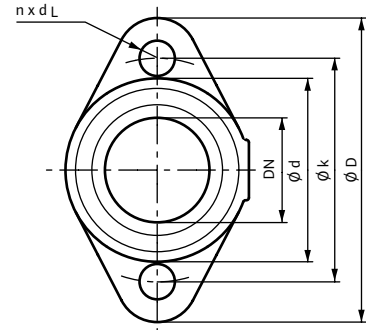


Dimensions and Weights

Model	Dimensions - Inches (mm)									Weight - lbs (kg)
	l_0	l_1	l_2	a_1	a_2	b_1	b_2	b_4	b_5	
Stratos 1.25x3-25	6 1/2	3 3/4	1 15/16	7 3/16	1 11/16	2 1/8	1 7/8	3 1/2	5 9/16	11.02
	(165)	(82.5)	(49)	(182)	(43)	(54)	(48)	(89)	(142)	(5.0)

Flange Dimensions

Dimensions - Inches (mm)				
Dia.	ϕD	ϕd	ϕk	$n \times d_L$
1 1/4"	4 3/4	2 7/8	3 1/2	2 x 9/16
	(121)	(73)	(89)	(2 x 14)



ECM Motor Data

Model	hp	Speed	Watts	FLA	FLA
		RPM	W	1~230V	3~230V
Stratos 1.25x3-25	0.134	1400-3700	9-130	0.13-1.20	0.13-1.20

