

Submittal Data Sheet

Wilco IPL - In-line Centrifugal Circulators

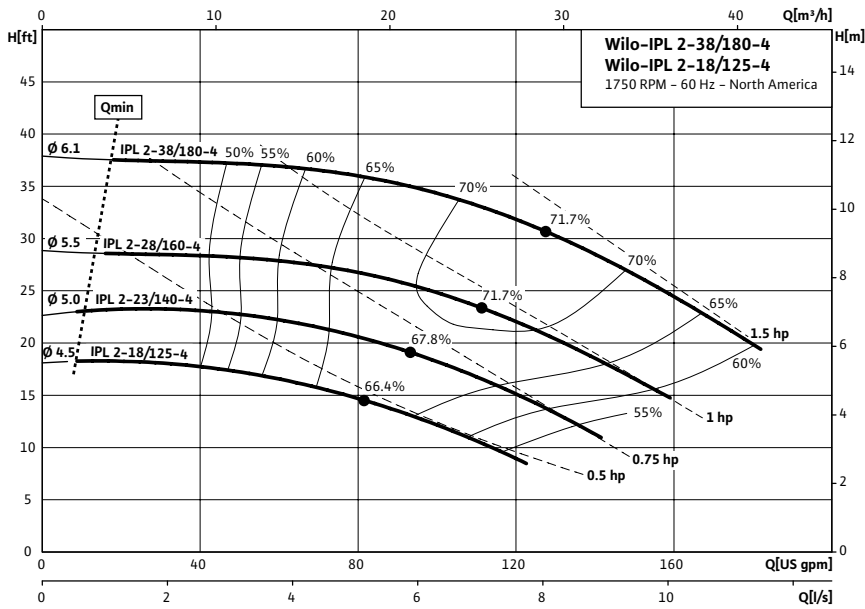


Wilco IPL 2 1750 RPM



Project:	
Engineer:	
Contractor:	
Submitted By:	Date:
Approved By:	Date:

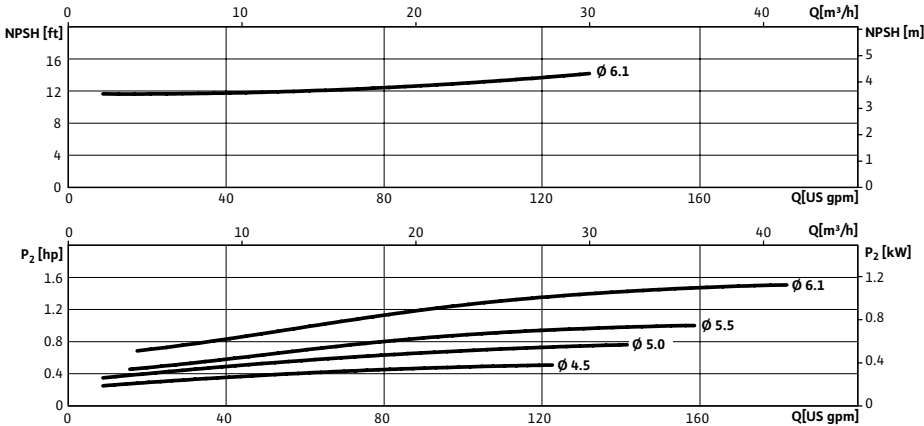
Tag #	Model #	Flow	Head	HP	Cycle	Phase	Voltage	RPM
	IPL 2-38/180-4				60Hz			1,750 (4 Pole)



Technical Data	
Temp Range:	15 °F to + 250 °F (-10 °C to +120 °C)
Power Supply	1~115 / 208-230 V, 60 Hz 3~208-230 / 460 V, 60 Hz 3~575 V, 60 Hz
Motor Options	TEFC, (ODP Opt), EPACK Rated
Flange Connection	2" with ¼" pressure gauge tappings
Max operating pressure:	145 PSI (10 Bar)

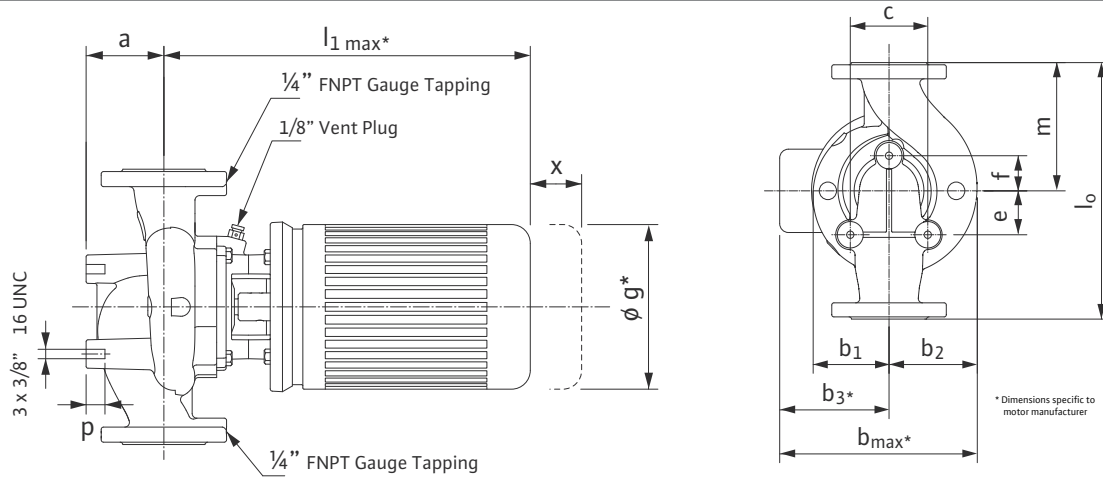
Materials of Construction	
Pump volute	Cast Iron
Impeller	Engineered composite
Shaft	316L stainless steel stub shaft
Mechanical seal	Q1Q1X4GG (silicium carbide seal faces, HNBR elastomers)

Applications	
• Hot water heating systems	• Industrial circulation systems
• Air conditioning systems	• Solar Systems
• Closed cooling circuits	• Geothermal Systems



Approval Stamp

Dimensions & Weights

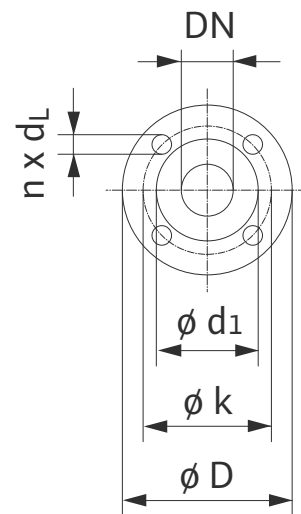


Dimensions and Weights

Model	Dimensions—Inches (mm)															Weight
	Dia.	a	l_1	b_1	b_2	b_3	b_{max}	c	e	f	g	l_0	m	p	x	
IPL 2-18/125-4	2	3 1/2	17 9/16	4 1/2	5 1/8	5 1/4	9 3/4	4 1/8	1 9/16	1 15/16	7	14	6 3/4	1 3/16	5 7/8	66.4 lbs
	(50)	(89)	(446)	(114)	(130)	(133)	(248)	(104)	(40)	(50)	(178)	(356)	(172)	(20)	(51)	30.1 kg
IPL 2-23/140-4	2	3 1/2	17 9/16	4 1/2	5 1/8	5 1/4	9 3/4	4 1/8	1 9/16	1 15/16	7	14	6 3/4	1 3/16	5 7/8	76.3 lbs
	(50)	(89)	(446)	(114)	(130)	(133)	(248)	(104)	(40)	(50)	(178)	(356)	(172)	(20)	(51)	34.6 kg
IPL 2-28/160-4	2	3 1/2	17 9/16	4 1/2	5 1/8	5 1/4	9 3/4	4 1/8	1 9/16	1 15/16	7	14	6 3/4	1 3/16	5 7/8	84.4 lbs
	(50)	(89)	(446)	(114)	(130)	(133)	(248)	(104)	(40)	(50)	(178)	(356)	(172)	(20)	(51)	38.4 kg
IPL 2-38/180-4	2	3 1/2	17 9/16	4 1/2	5 1/8	5 1/4	9 3/4	4 1/8	1 9/16	1 15/16	7	14	6 3/4	1 3/16	5 7/8	91.3 lbs
	(50)	(89)	(446)	(114)	(130)	(133)	(248)	(104)	(40)	(50)	(178)	(356)	(172)	(20)	(51)	41.4 kg

Flange Dimensions

Dimensions - Inches (mm)				
DN	ϕD	ϕd_1	ϕk	$n \times d_L$
2	5 1/4	3 7/16	3 1/2	4 x 9/16
	(133)	(87)	(102)	(4 x 14)



TEFC Motor Data

Model	P2	Phase	FLA	Voltage
	[HP]	[-]	[A]	[V]
IPL 2-18/125-4	.5	1	8.4 / 4.4 - 4.2	115 / 208-230
IPL 2-23/140-4	.75	1	10.2 / 5.4 - 5.1	115 / 208-230
	1	1	13.4 / 7.4 - 6.7	115 / 208-230
IPL 2-28/160-4	1	3	3.4 / 1.7	208-230 / 460
	1	3	1.4	575
IPL 2-38/180-4	1.5	1	18 / 9.5 - 9	115 / 208-230
	1.5	3	5 - 4.8 / 2.4	208-230 / 460
	1.5	3	1.9	575