

Submittal Data Sheet

Wilco IPL - Inline Centrifugal Circulators

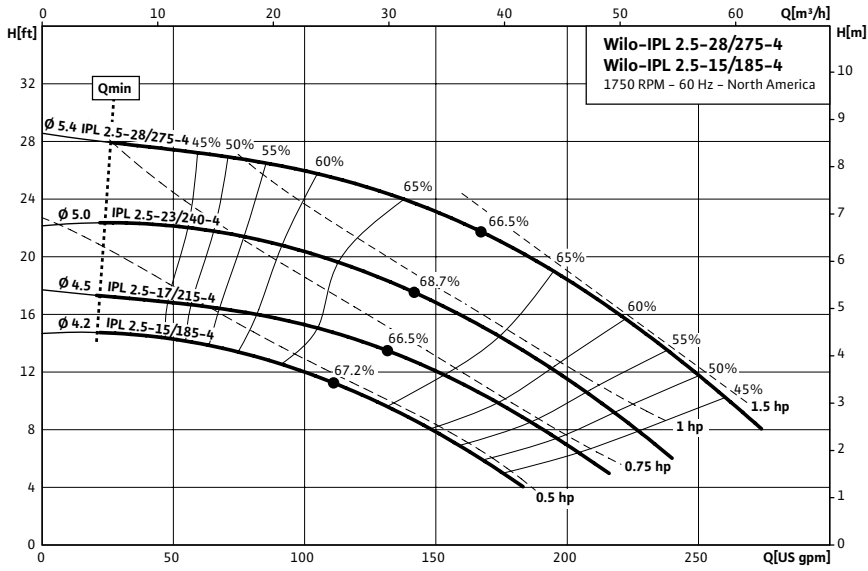


Wilco IPL 2.5 1750 RPM



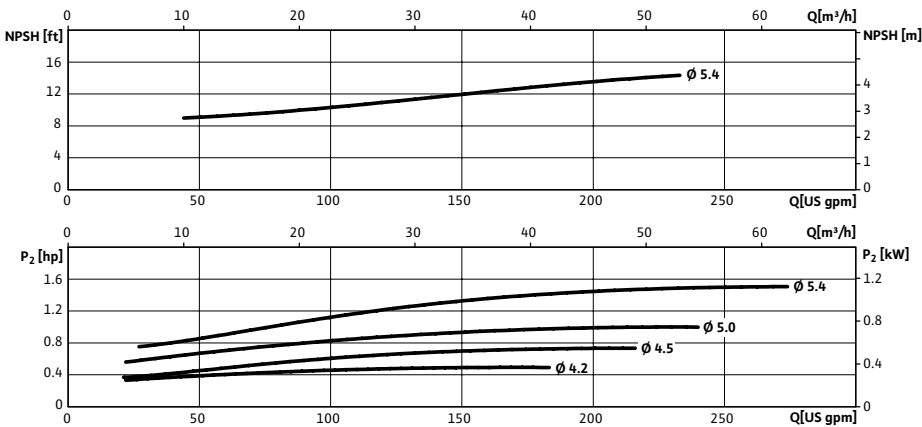
Project:	
Engineer:	
Contractor:	
Submitted By:	Date:
Approved By:	Date:

Tag #	Model #	Flow	Head	HP	Cycle	Phase	Voltage	RPM
	IPL 2.5-28/275-4				60Hz			1,750 (4 Pole)



Technical Data	
Temp Range:	15 °F to + 250 °F (-10 °C to +120 °C)
Power Supply	1~115 / 208-230 V, 60 Hz 3~208-230 / 460 V, 60 Hz 3~575 V, 60 Hz
Motor Options	TEFC, (ODP Opt), EPACK Rated
Flange Connection	2½" with ¼" pressure gauge tappings
Max operating pressure:	145 PSI (10 Bar)

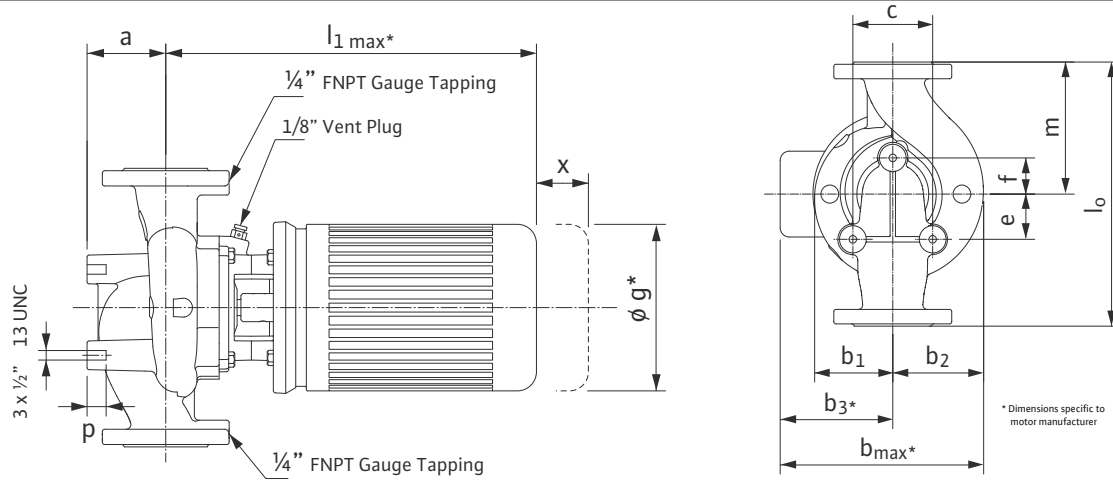
Materials of Construction	
Pump volute	Cast Iron
Impeller	Engineered composite
Shaft	316L stainless steel stub shaft
Mechanical seal	Q1Q1X4GG (silicium carbide seal faces, HNBR elastomers)



Applications	
• Hot water heating systems	• Industrial circulation systems
• Air conditioning systems	• Solar Systems
• Closed cooling circuits	• Geothermal Systems



Dimensions & Weights

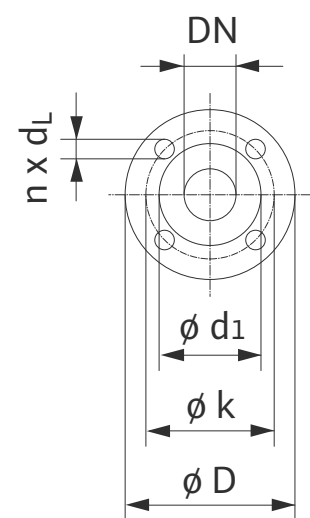


Dimensions and Weights

Model	Dimensions-inches (mm)														Weight	
	Dia.	a	l ₁	b ₁	b ₂	b ₃	b _{max}	c	e	f	g	l ₀	m	p		x
IPL 2.5-15/185-4	2 1/2	3 3/4	17 ^{13/16}	4 ^{11/16}	5 ^{7/16}	5 1/4	10 ^{1/8}	5 ^{5/16}	1 ^{9/16}	2 ^{3/16}	7	13 1/2	6 3/4	1 ^{3/16}	5 ^{7/8}	78.7 lbs
	(65)	(95)	(452)	(119)	(138)	(133)	(257)	(135)	(40)	(55)	(178)	(343)	(171)	(20)	(57)	35.7 kg
IPL 2.5-17/215-4	2 1/2	3 3/4	16 ^{7/16}	4 ^{11/16}	5 ^{7/16}	5 1/4	10 ^{1/8}	5 ^{5/16}	1 ^{9/16}	2 ^{3/16}	6 ^{3/16}	13 1/2	6 3/4	1 ^{3/16}	5 ^{7/8}	88.8 lbs
	(65)	(95)	(418)	(119)	(138)	(133)	(257)	(135)	(40)	(55)	(158)	(343)	(171)	(20)	(57)	40.3 kg
IPL 2.5-23/240-4	2 1/2	3 3/4	17 ^{13/16}	4 ^{11/16}	5 ^{7/16}	5 3/4	10 ^{1/8}	5 ^{5/16}	1 ^{9/16}	2 ^{3/16}	7	13 1/2	6 3/4	1 ^{3/16}	5 ^{7/8}	96.8 lbs
	(65)	(95)	(452)	(119)	(138)	(146)	(257)	(135)	(40)	(55)	(178)	(343)	(171)	(20)	(57)	43.9 kg
IPL 2.5-28/275-4	2 1/2	3 3/4	17 ^{13/16}	4 ^{11/16}	5 ^{7/16}	5 3/4	10 ^{1/8}	5 ^{5/16}	1 ^{9/16}	2 ^{3/16}	7	13 1/2	6 3/4	1 ^{3/16}	5 ^{7/8}	89.7 lbs
	(65)	(95)	(452)	(119)	(138)	(146)	(257)	(135)	(40)	(55)	(178)	(343)	(171)	(20)	(57)	40.7 kg

Flange Dimensions

Dimensions - Inches (mm)				
DN	φD	φd ₁	φk	n x d _L
2.5	7	4 ^{5/8}	5 1/2	4 X 3/4
	(178)	(118)	(140)	(4 x 19)



TEFC Motor Data

Model	P2	Phase	FLA	Voltage
	[HP]	[-]	[A]	[V]
IPL 2.5-15/185-4	.5	1	8.4 / 4.4 - 4.2	115 / 208-230
	.75	1	10.2 / 5.4 - 5.1	115 / 208-230
IPL 2.5-23/240-4	1	1	13.4 / 7.4 - 6.7	115 / 208-230
	1	3	3.4 / 1.7	208-230 / 460
	1	3	1.4	575
	1.5	1	18 / 9.5 - 9	115 / 208-230
IPL 2.5-28/275-4	1.5	3	5 - 4.8 / 2.4	208-230 / 460
	1.5	3	1.9	575