

Submittal Data Sheet

Wilco IPL - In-line Centrifugal Circulators

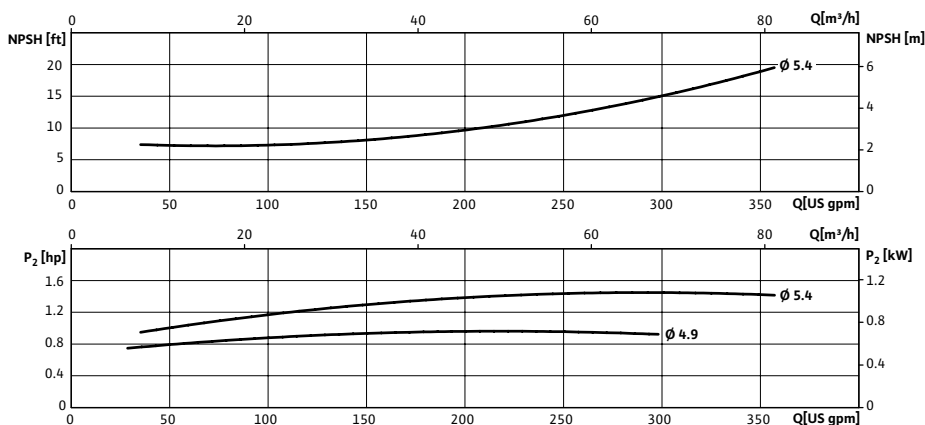
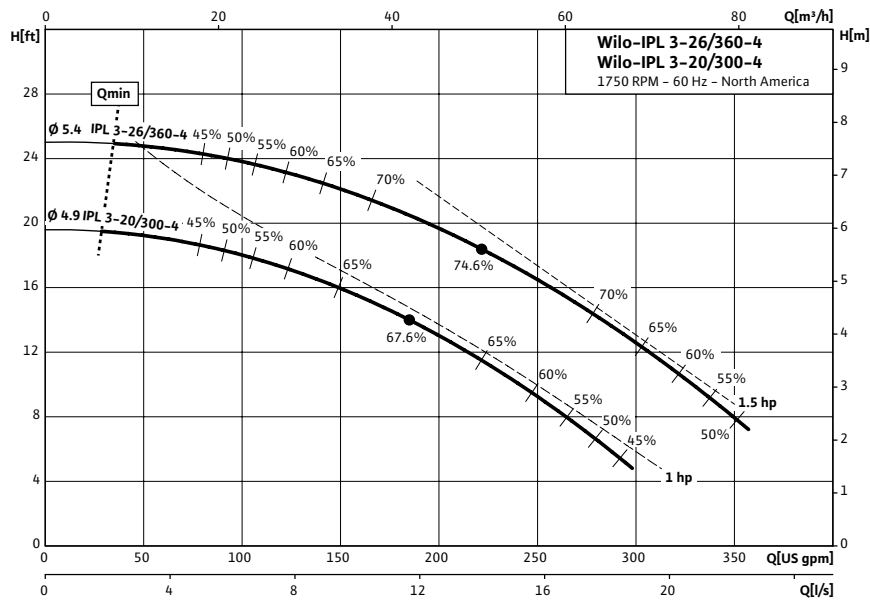


Wilco IPL 3 1750 RPM



Project:	
Engineer:	
Contractor:	
Submitted By:	Date:
Approved By:	Date:

Tag #	Model #	Flow	Head	HP	Cycle	Phase	Voltage	RPM
	IPL 3-26/360-4				60Hz			1,750 (4 Pole)



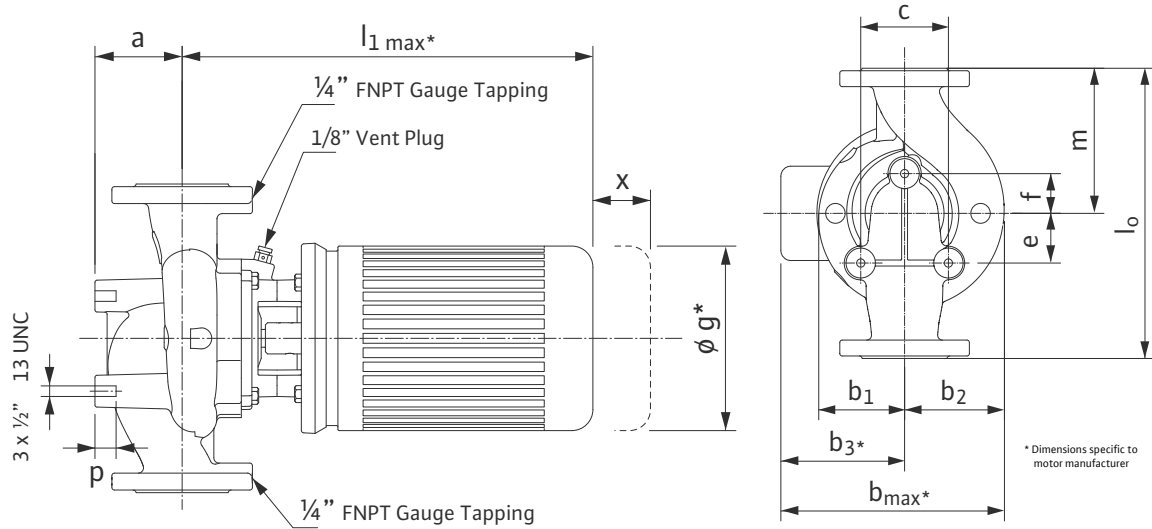
Technical Data	
Temp Range:	15 °F to + 250 °F (-10 °C to +120 °C)
Power Supply	1~115 / 208-230 V, 60 Hz 3~208-230 / 460 V, 60 Hz 3~575 V, 60 Hz
Motor Options	TEFC, (ODP Opt), EPACK Rated
Flange Connection	3" with 1/4" pressure gauge tappings
Max operating pressure:	145 PSI (10 Bar)

Materials of Construction	
Pump volute	Cast Iron
Impeller	Engineered composite
Shaft	316L stainless steel stub shaft
Mechanical seal	Q1Q1X4GG (silicium carbide seal faces, HNBR elastomers)

Applications	
• Hot water heating systems	• Industrial circulation systems
• Air conditioning systems	• Solar Systems
• Closed cooling circuits	• Geothermal Systems

Approval Stamp

Dimensions & Weights

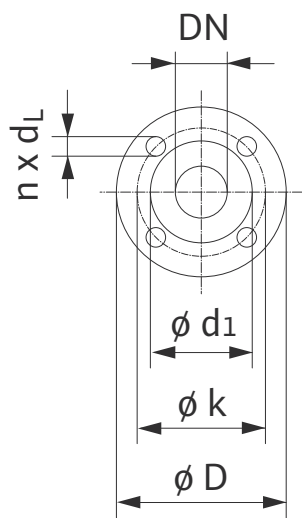


Dimensions and Weights

Model	Dimensions-inches (mm)															Weight
	Dia.	a	l ₁	b ₁	b ₂	b ₃	b _{max}	c	e	f	g	l ₀	m	p	x	
IPL 3-20/300-4	3	4 1/8	18 1/16	4 15/16	6	5 3/4	10 7/8	5 5/16	1 9/16	2 3/16	7	15	7	1 3/16	5 7/8	103.6 lbs
	(80)	(105)	(458)	(125)	(152)	(146)	(277)	(135)	(40)	(55)	(178)	(381)	(178)	(20)	(63)	47 kg
IPL 3-26/360-4	3	4 1/8	18 1/16	4 15/16	6	5 3/4	10 11/16	5 5/16	1 9/16	2 3/16	7	15	7	1 3/16	5 7/8	110.7 lbs
	(80)	(105)	(458)	(125)	(152)	(146)	(271)	(135)	(40)	(55)	(178)	(381)	(178)	(20)	(63)	50.2 kg

Flange Dimensions

Dimensions - Inches (mm)				
DN	øD	ød ₁	øk	n x d _L
3	7 1/2	5 1/8	6	4 X 3/4
	(191)	(130)	(152.4)	(4 x 19)



TEFC Motor Data

Model	P2	Phase	FLA	Voltage
	[HP]	[-]	[A]	[V]
IPL 3-20/300-4	1	1	13.4 / 7.4 - 6.7	115 / 208-230
	1	3	3.4 / 1.7	208-230 / 460
	1	3	1.4	575
IPL 3-26/360-4	1.5	1	18 / 9.5-9	115 / 208-230
	1.5	3	5 - 4.8 / 2.4	208-230 / 460
	1.5	3	1.9	575