

Submittal Data Sheet

Wilco IPL - Inline Centrifugal Circulators

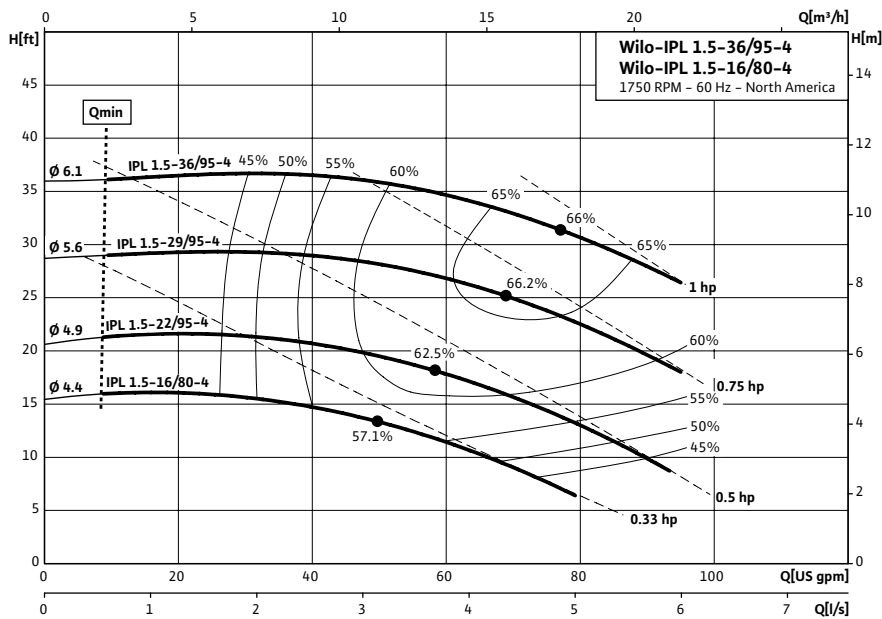


Wilco IPL 1.5 1750 RPM



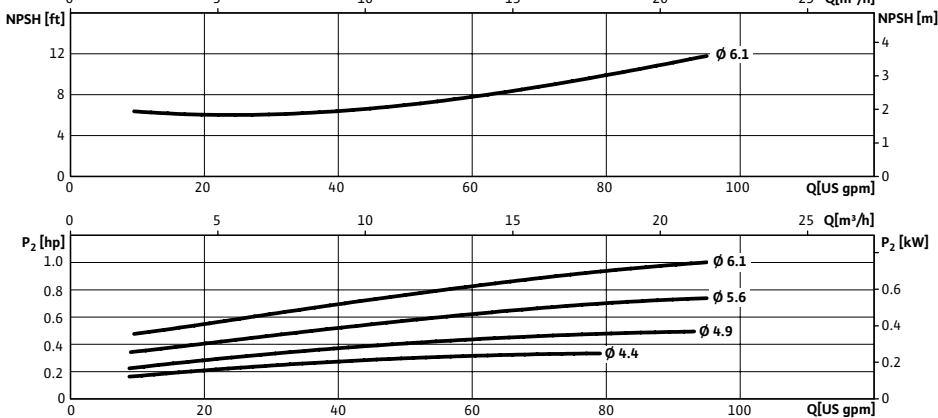
Project:	
Engineer:	
Contractor:	
Submitted By:	Date:
Approved By:	Date:

Tag #	Model #	Flow	Head	HP	Cycle	Phase	Voltage	RPM
	IPL 1.5-36/95-4				60Hz			1,750 (4 Pole)



Technical Data	
Temp Range:	15 °F to + 250 °F (-10 °C to +120 °C)
Power Supply	1~115 / 208-230 V, 60 Hz
Motor Options	TEFC, (ODP Opt), EPACK Rated
Flange Connection	1½" with ¼" pressure gauge tappings
Max operating pressure:	145 PSI (10 Bar)

Materials of Construction	
Pump volute	Cast Iron
Impeller	Engineered composite
Shaft	316L stainless steel stub shaft
Mechanical seal	Q1Q1X4GG (silicium carbide seal faces, HNBR elastomers)



Applications	
• Hot water heating systems	• Industrial circulation systems
• Air conditioning systems	• Solar Systems
• Closed cooling circuits	• Geothermal Systems

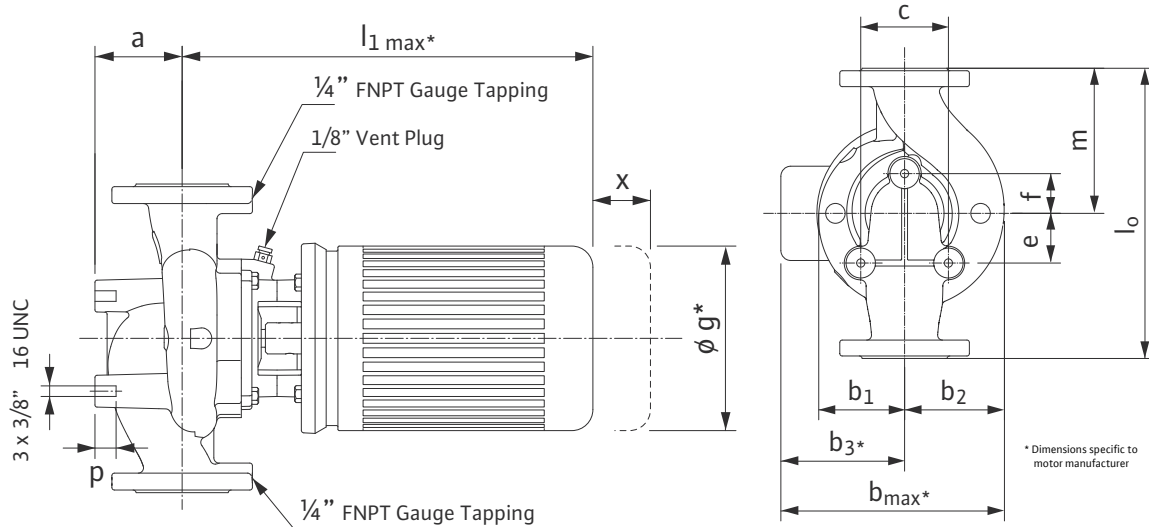
Approval Stamp

Submittal Data Sheet

Wilo IPL - Inline Centrifugal Circulators



Dimensions & Weights

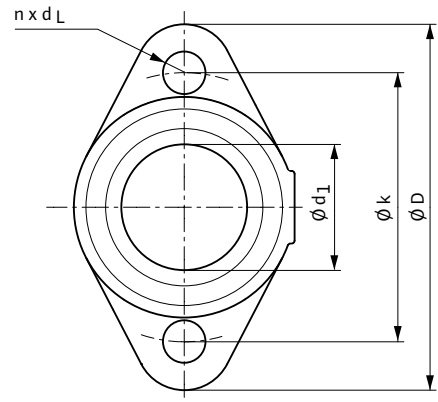


Dimensions and Weights

Model	Dia.	Dimensions-inches (mm)														Weight	
		a	l_1	b_1	b_2	b_3	b_{max}	c	e	f	g	l_0	m	o	p		x
IPL 1.5-16/80-4	1 1/2	2 15/16	1 7 7/16	4 5/16	4 3/4	5 1/4	9 9/16	3 9/16	1 9/16	1 15/16	7	13	6 1/2	3/8	1 3/16	5 7/8	56.7 lbs
	(40)	(75)	(444)	(109)	(121)	(133)	(242)	(90)	(40)	(50)	(178)	(330)	(165)	3/8	(20)	(49)	26 kg
IPL 1.5-22/95-4	1 1/2	2 15/16	1 7 7/16	4 5/16	4 3/4	5 1/4	9 9/16	3 9/16	1 9/16	1 15/16	7	13	6 1/2	3/8	1 3/16	5 7/8	58.6 lbs
	(40)	(75)	(444)	(109)	(121)	(133)	(242)	(90)	(40)	(50)	(178)	(330)	(165)	3/8	(20)	(49)	27 kg
IPL 1.5-29/95-4	1 1/2	2 15/16	1 6 1/8	4 5/16	4 3/4	5 1/4	9 9/16	3 9/16	1 9/16	1 15/16	6 3/16	13	6 1/2	3/8	1 3/16	5 7/8	68.6 lbs
	(40)	(75)	(410)	(109)	(121)	(133)	(242)	(90)	(40)	(50)	(158)	(330)	(165)	3/8	(20)	(49)	31 kg
IPL 1.5-36/95-4	1 1/2	2 15/16	1 7 7/16	4 5/16	4 3/4	5 1/4	9 9/16	3 9/16	1 9/16	1 15/16	7	13	6 1/2	3/8	1 3/16	5 7/8	76.7 lbs
	(40)	(75)	(444)	(109)	(121)	(133)	(242)	(90)	(40)	(50)	(178)	(330)	(165)	3/8	(20)	(49)	35 kg

Flange Dimensions

DN	Dimensions - Inches (mm)			
	ϕD	ϕd_1	ϕk	$n \times d_L$
1.5	4 3/4	2 7/8	3 1/2	2 x 9/16
	(121)	(73)	(89)	(2 x 14)



TEFC Motor Data

Model	P2	Phase	FLA	Voltage
	[HP]	[~]	[A]	[V]
IPL 1.5-16/80-4	.33	1	6 / 3.2 - 3	115 / 208-230
IPL 1.5-22/95-4	.5	1	8.4 / 4.4 - 4.2	115 / 208-230
IPL 1.5-29/95-4	.75	1	10.2 / 5.4 - 5.1	115 / 208-230
IPL 1.5-36/95-4	1	1	13.4 / 7.4 - 6.7	115 / 208-230