


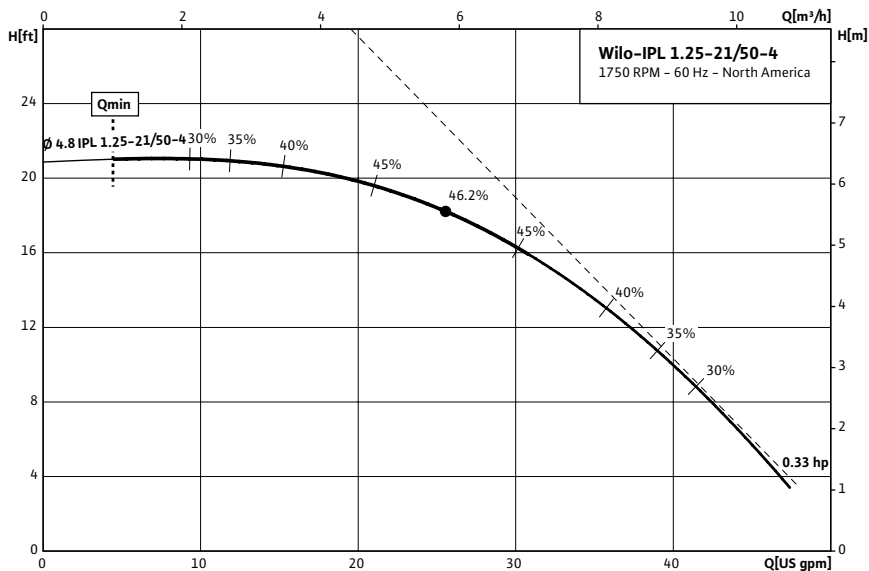
Submittal Data Sheet

Wilco IPL - In-line Centrifugal Circulators



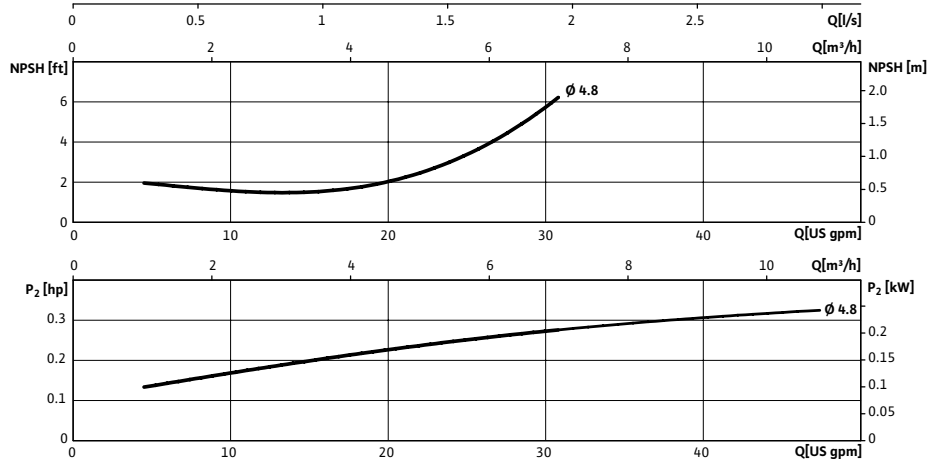
Wilco IPL 1.25 1750 RPM

	Project:							
	Engineer:							
	Contractor:							
	Submitted By:	Date:						
	Approved By:	Date:						
Tag #	Model #	Flow	Head	HP	Cycle	Phase	Voltage	RPM
	IPL 1.25-21/50-4				60Hz			1,750 (4 Pole)



Technical Data	
Temp Range:	15 °F to + 250 °F (-10 °C to +120 °C)
Power Supply	1~115 / 208-230 V, 60 Hz
Motor Options	TEFC, (ODP Opt), EPACK Rated
Flange Connection	1 1/4" with 1/4" pressure gauge tappings
Max operating pressure:	145 PSI (10 Bar)

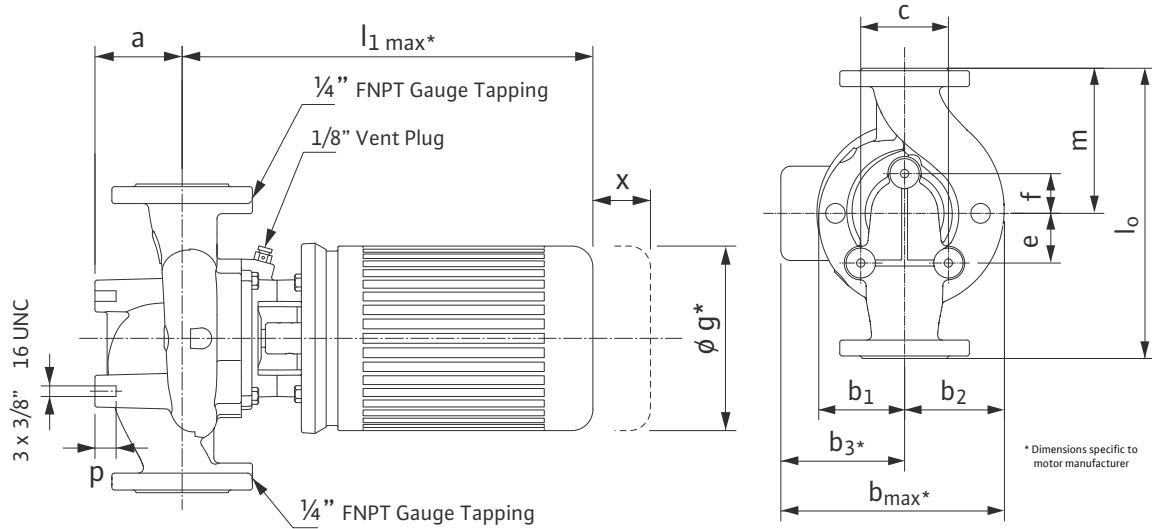
Materials of Construction	
Pump volute	Cast Iron
Impeller	Engineered composite
Shaft	316L stainless steel stub shaft
Mechanical seal	Q1Q1X4GG (silicium carbide seal faces, HNBR elastomers)



Applications	
• Hot water heating systems	• Industrial circulation systems
• Air conditioning systems	• Solar Systems
• Closed cooling circuits	• Geothermal Systems

Approval Stamp

Dimensions & Weights

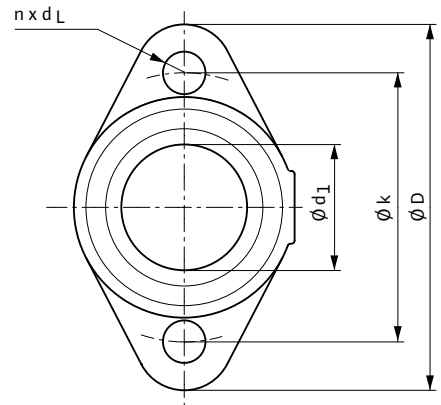


Dimensions and Weights

Model	Dimensions-inches (mm)															Weight
	Dia.	a	l ₁	b ₁	b ₂	b ₃	b _{max}	c	e	f	g	l ₀	m	p	x	
IPL 1.25-21/50-4	1 1/4 (32)	2 3/4 (70)	17 11/16 (449)	3 3/4 (96)	4 1/16 (104)	5 1/4 (133)	9 1/16 (229)	3 9/16 (90)	1 9/16 (40)	1 15/16 (50)	7 (178)	11 (279)	5 1/2 (140)	1 3/16 (20)	5 7/8 (54)	52 lbs 23.6 kg

Flange Dimensions

Dimensions - Inches (mm)				
DN	øD	ød ₁	øk	n x d _L
1.25	4 3/4 (121)	2 7/8 (73)	3 1/2 (89)	2 x 9/16 (2 x 14)



TEFC Motor Data

Model	P2	Phase	FLA	Voltage
	[HP]	[-]	[A]	[V]
IPL 1.25-21/50-4	.33	1	6 / 3.2 - 3	115 / 208-230