

Submittal Data Sheet

Wilo IPL - Inline Centrifugal Circulators

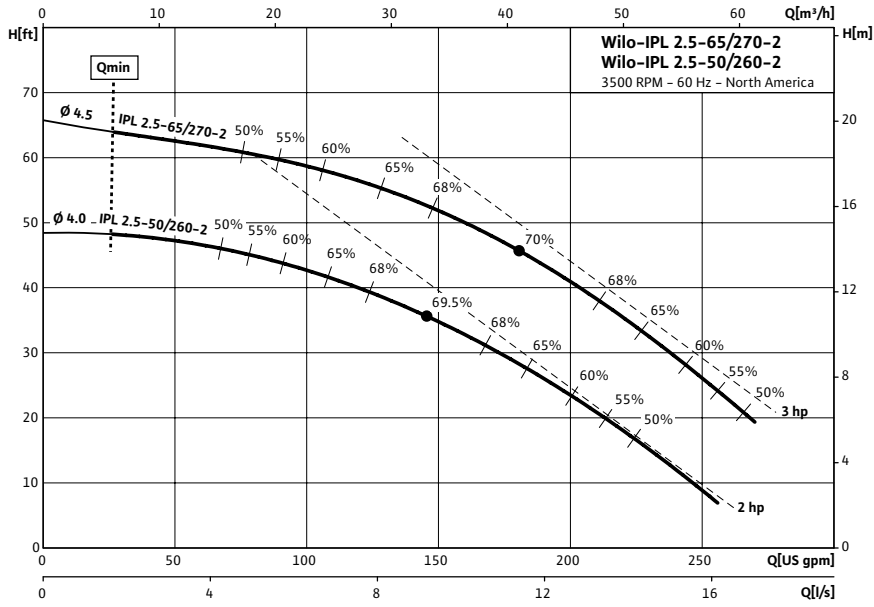


Wilo IPL 2.5 3500 RPM



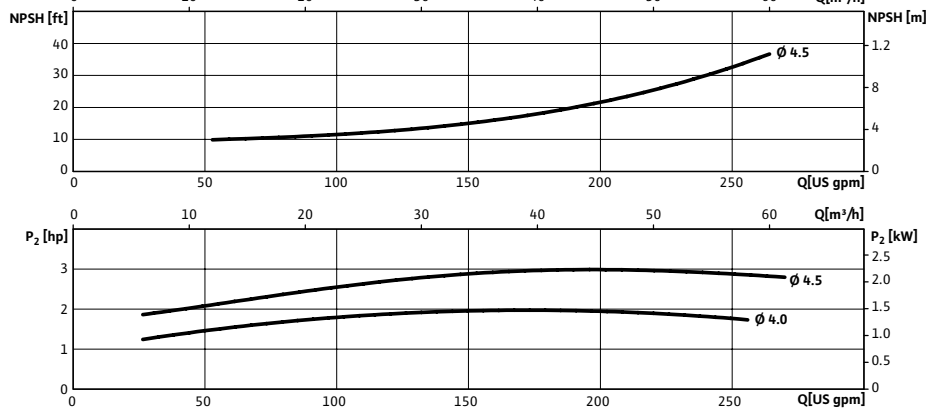
Project:			
Engineer:			
Contractor:			
Submitted By:		Date:	
Approved By:		Date:	

Tag #	Model #	Flow	Head	HP	Cycle	Phase	Voltage	RPM
	IPL 2.5-65/270-2				60Hz			3,500 (2 Pole)



Technical Data	
Temp Range:	15 °F to +250 °F (-10 °C to +120 °C)
Power Supply	1~115 / 208-230 V, 60 Hz 3~208-230 / 460 V, 60 Hz 3~575 V, 60 Hz
Motor Options	TEFC, (ODP Opt), EPACK Rated
Flange Connection	2½" with ¼" pressure gauge tappings
Max operating pressure:	145 PSI (10 Bar)

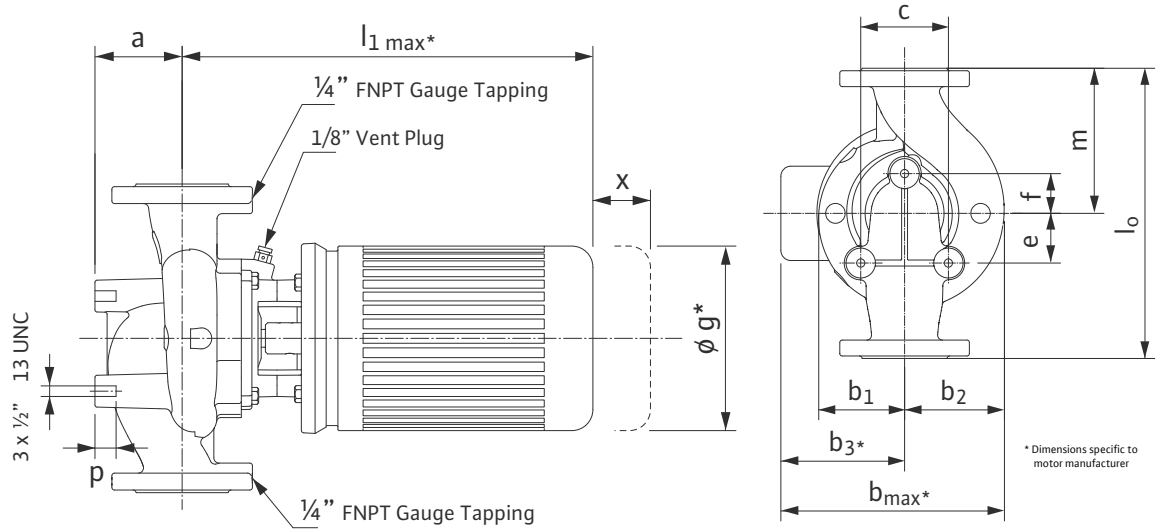
Materials of Construction	
Pump volute	Cast Iron
Impeller	Engineered composite
Shaft	316L stainless steel stub shaft
Mechanical seal	Q1Q1X4GG (silicium carbide seal faces, HNBR elastomers)



Applications	
• Hot water heating systems	• Industrial circulation systems
• Air conditioning systems	• Solar Systems
• Closed cooling circuits	• Geothermal Systems

Approval Stamp

Dimensions & Weights

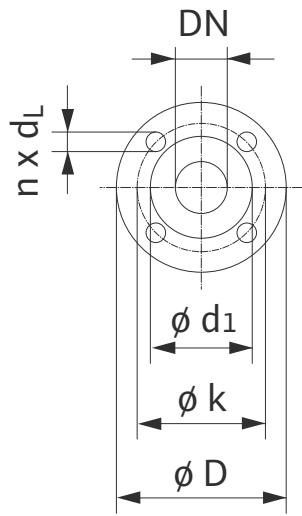


Dimensions and Weights

Model	Dimensions—inches (mm)															Weight
	Dia	a	l_1	b_1	b_2	b_3	b_{max}	c	e	f	g	l_0	m	p	x	
IPL 2.5-50/260-2	2½	3⅝	18	3⅞	4 ^{11/16}	5¾	9⅝	4⅜	1 ^{9/16}	1 ^{15/16}	7	13½	6¾	1	5 ^{7/8}	91.2 lbs
	(65)	(93)	(458)	(99)	(119)	(146)	(245)	(104)	(40)	(50)	(178)	(343)	(171)	(25)	(67)	41.4 kg
IPL 2.5-65/270-2	2½	3⅝	18	3⅞	4 ^{11/16}	5¾	9⅝	4⅜	1 ^{9/16}	1 ^{15/16}	7	13½	6¾	1	5 ^{7/8}	86.7 lbs
	(65)	(93)	(458)	(99)	(119)	(146)	(245)	(104)	(40)	(50)	(178)	(343)	(171)	(25)	(67)	39.4 kg

Flange Dimensions

Dimensions - Inches (mm)				
DN	ϕD	ϕd_1	ϕk	$n \times d_L$
2.5	7	4⅝	5½	4 X ¾
	(178)	(118)	(140)	(4 x 19)



TEFC Motor Data

Model	P2	Phase	FLA	Voltage
	[HP]	[-]	[A]	[V]
IPL 2.5-50/260-2	2	1	24 / 12.6 - 12	115 / 208-230
	2	3	6.2 - 5.8 / 2.9	208-230 / 460
	2	3	2.3	575
IPL 2.5-65/270-2	3	3	8.5 - 8 / 4	208-230 / 460
	3	3	3	575