

Submittal Data Sheet

Wilco IPL - Inline Centrifugal Circulators

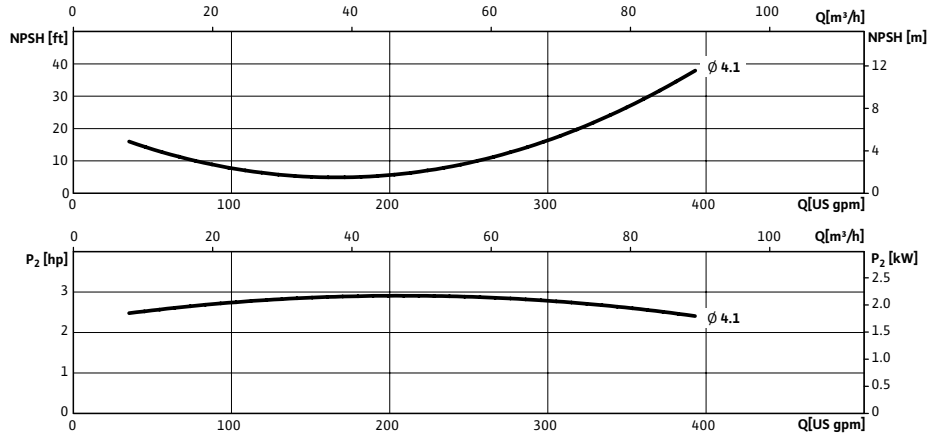
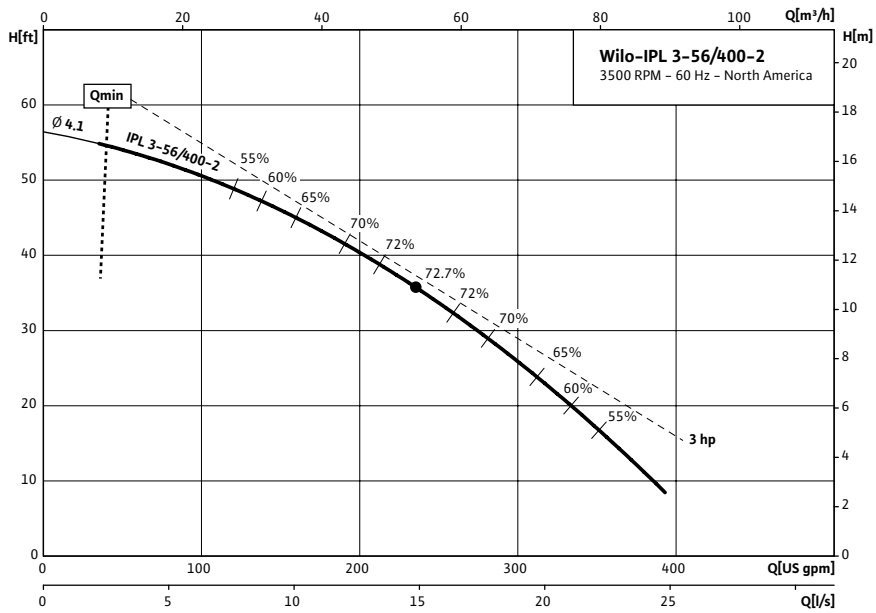


Wilco IPL 3 3500 RPM



Project:	
Engineer:	
Contractor:	
Submitted By:	Date:
Approved By:	Date:

Tag #	Model #	Flow	Head	HP	Cycle	Phase	Voltage	RPM
	IPL 3-56/400-2				60Hz			3,500 (2 Pole)



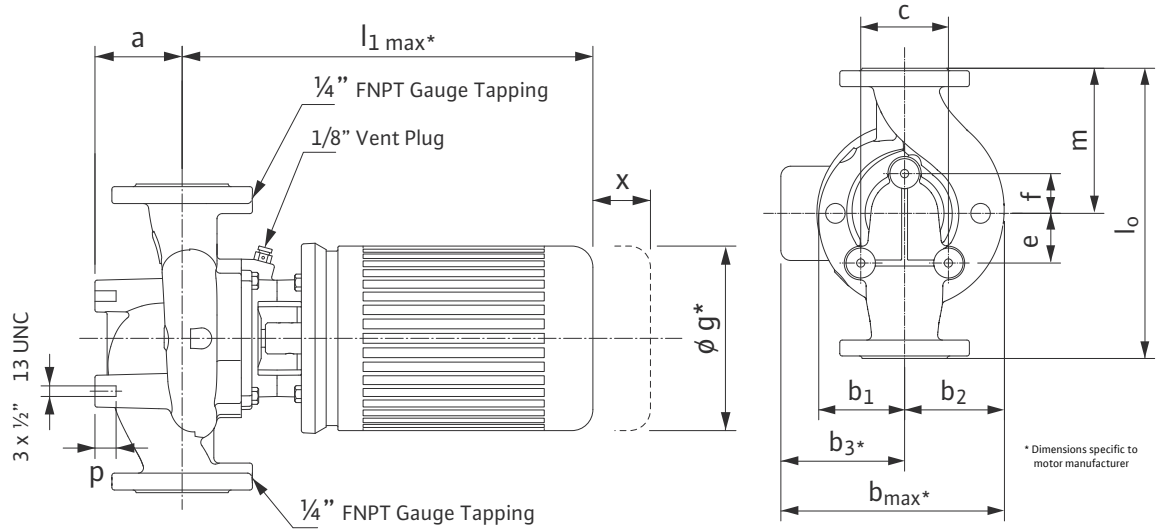
Technical Data	
Temp Range:	15 °F to + 250 °F (-10 °C to +120 °C)
Power Supply	3~208-230 / 460 V, 60 Hz 3~575 V, 60 Hz
Motor Options	TEFC, (ODP Opt), EPACT Rated
Flange Connection	3" with 1/4" pressure gauge tappings
Max operating pressure:	145 PSI (10 Bar)

Materials of Construction	
Pump volute	Cast Iron
Impeller	Engineered composite
Shaft	316L stainless steel stub shaft
Mechanical seal	Q1Q1X4GG (silicium carbide seal faces, HNBR elastomers)

- #### Applications
- Hot water heating systems
 - Industrial circulation systems
 - Air conditioning systems
 - Solar Systems
 - Closed cooling circuits
 - Geothermal Systems

Approval Stamp

Dimensions & Weights

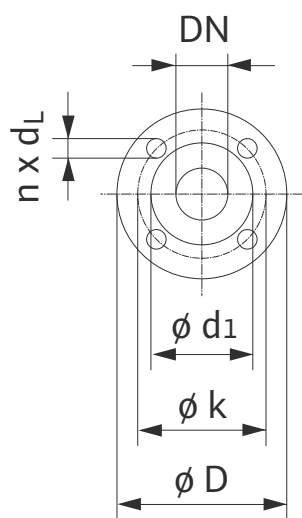


Dimensions and Weights

Model	Dimensions-inches (mm)															Weight
	Dia	a	l ₁	b ₁	b ₂	b ₃	b _{max}	c	e	f	g	l ₀	m	p	x	
IPL 3-56/400-2	3	3 ^{15/16}	18 ^{3/8}	4 ^{1/4}	5 ^{5/16}	5 ^{3/4}	10	5 ^{5/16}	1 ^{9/16}	2 ^{3/16}	7	14	7	1	5 ^{7/8}	97.7 lbs
	(80)	(100)	(460)	(108)	(135)	(146)	(254)	(135)	(40)	(55)	(178)	(356)	(178)	(25)	(69)	44.4 kg

Flange Dimensions

Dimensions - Inches (mm)				
DN	øD	ød ₁	øk	n x d _L
3	7 ^{1/2}	5 ^{1/8}	6	4 X 3/4
	(191)	(130)	(152.4)	(4 x 19)



TEFC Motor Data

Model	P2	Phase	FLA	Voltage
	[HP]	[-]	[A]	[V]
IPL 3-56/400-2	3	3	8.5 - 8/4	208-230/460
	3	3	3	575