

# Submittal Data Sheet

## Wilco IPL - Inline Centrifugal Circulators

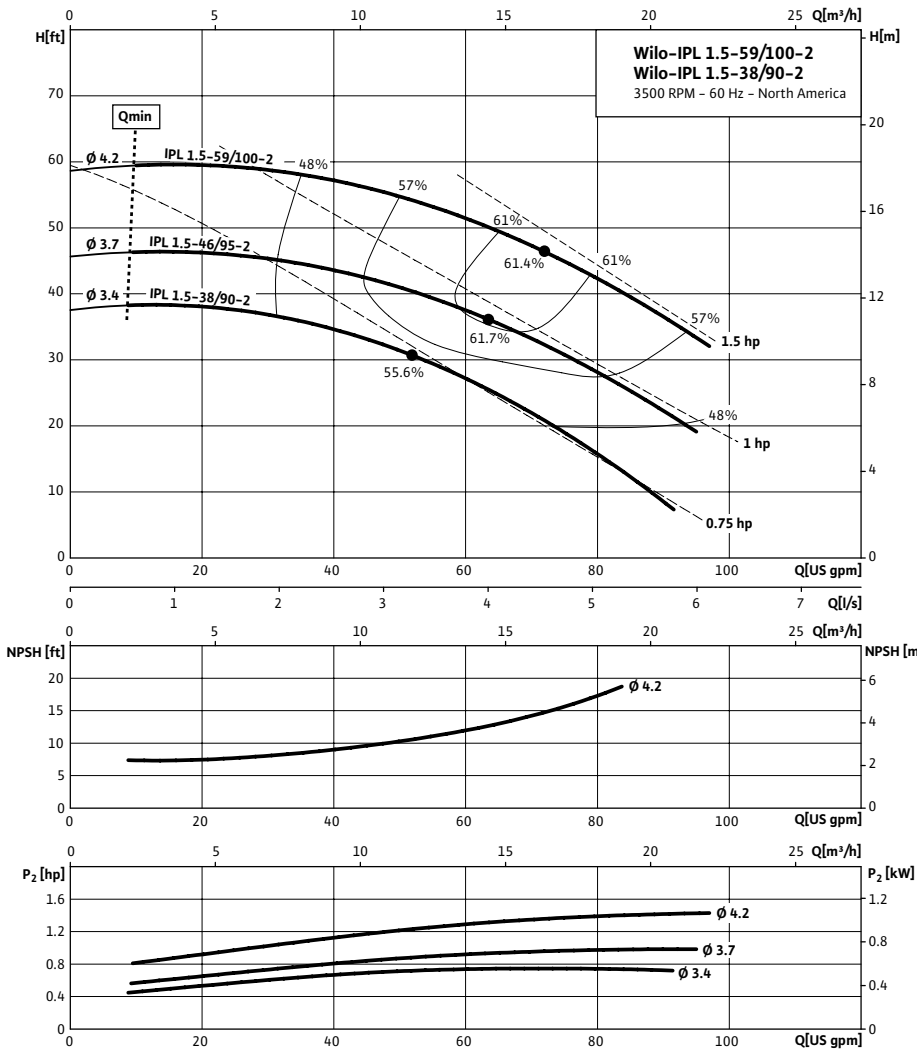


### Wilco IPL 1.5 3500 RPM



Project:	
Engineer:	
Contractor:	
Submitted By:	Date:
Approved By:	Date:

Tag #	Model #	Flow	Head	HP	Cycle	Phase	Voltage	RPM
	IPL 1.5-59/100-2				60Hz			3,500 (2 Pole)



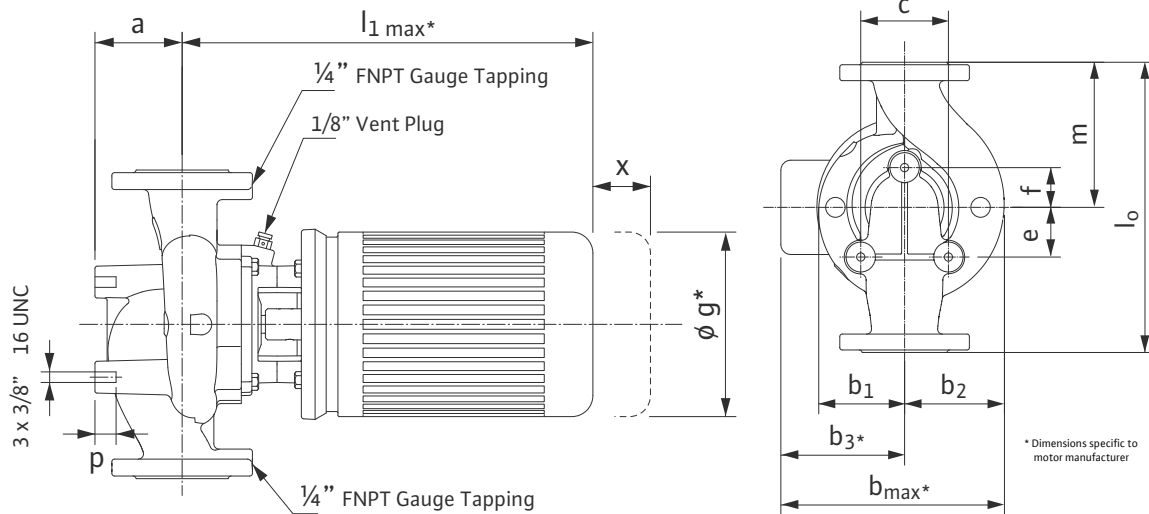
Technical Data	
Temp Range:	15 °F to + 250 °F (-10 °C to +120 °C)
Power Supply	1~115 / 208-230 V, 60 Hz 3~208-230 / 460 V, 60 Hz 3~575 V, 60 Hz
Motor Options	TEFC, (ODP Opt), EPACT Rated
Flange Connection	1½" with ¼" pressure gauge tappings
Max operating pressure:	145 PSI (10 Bar)

Materials of Construction	
Pump volute	Cast Iron
Impeller	Engineered composite
Shaft	316L stainless steel stub shaft
Mechanical seal	Q1Q1X4GG (silicium carbide seal faces, HNBR elastomers)

Applications	
• Hot water heating systems	• Industrial circulation systems
• Air conditioning systems	• Solar Systems
• Closed cooling circuits	• Geothermal Systems

Approval Stamp

### Dimensions & Weights

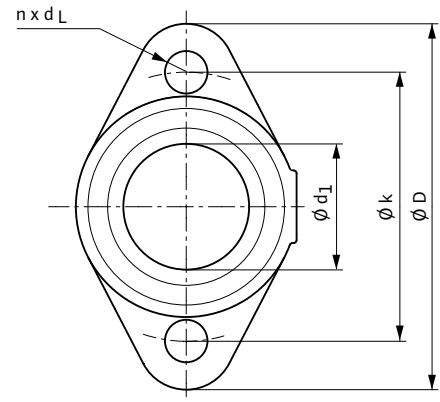


### Dimensions and Weights

Model	Dimensions-inches (mm)															Weight
	Dia.	a	$l_1$	$b_1$	$b_2$	$b_3$	$b_{\text{max}}$	c	e	f	g	$l_0$	m	p	x	
IPL 1.5-38/90-2	1 1/2	12 <sup>15/16</sup>	17 <sup>11/16</sup>	3 1/8	3 <sup>9/16</sup>	5 1/4	8 <sup>3/8</sup>	3 <sup>9/16</sup>	1 <sup>9/16</sup>	1 <sup>15/16</sup>	7	10	5	1 <sup>3/16</sup>	5 <sup>7/8</sup>	56.2 lbs
	(40)	(75)	(449)	(79)	(90)	(133)	(212)	(90)	(40)	(50)	(178)	(254)	(127)	(20)	(51)	25.5 kg
IPL 1.5-46/96-2	1 1/2	12 <sup>15/16</sup>	17 <sup>11/16</sup>	3 1/8	3 <sup>9/16</sup>	5 1/4	8 <sup>3/8</sup>	3 <sup>9/16</sup>	1 <sup>9/16</sup>	1 <sup>15/16</sup>	7	10	5	1 <sup>3/16</sup>	5 <sup>7/8</sup>	58.2 lbs
	(40)	(75)	(449)	(79)	(90)	(133)	(212)	(90)	(40)	(50)	(178)	(254)	(127)	(20)	(51)	26.4 kg
IPL 1.5-59/100-2	1 1/2	12 <sup>15/16</sup>	17 <sup>11/16</sup>	3 1/8	3 <sup>9/16</sup>	5 1/4	8 <sup>3/8</sup>	3 <sup>9/16</sup>	1 <sup>9/16</sup>	1 <sup>15/16</sup>	7	10	5	1 <sup>3/16</sup>	5 <sup>7/8</sup>	58.2 lbs
	(40)	(75)	(449)	(79)	(90)	(133)	(212)	(90)	(40)	(50)	(178)	(254)	(127)	(20)	(51)	26.4 kg

### Flange Dimensions

Dimensions - Inches (mm)				
DN	$\phi D$	$\phi d_1$	$\phi k$	$n \times d_L$
1.5	4 3/4 (121)	2 7/8 (73)	3 1/2 (89)	2 x 9/16 (2 x 14)



### TEFC Motor Data

Model	P2	Phase	FLA	Voltage
	[HP]	[-]	[A]	[V]
IPL 1.5-38/90-2	.75	1	9.4 / 4.9 - 4.7	115 / 208-230
	1	1	15 / 7.9 - 7.5	115 / 208-230
IPL 1.5-46/96-2	1	3	3.7 - 3.6 / 1.8	208-230 / 460
	1	3	1.2	575
IPL 1.5-59/100-2	1.5	1	16 / 8	115 / 208-230
	1.5	3	4.9 - 4.6 / 2.3	208-230 / 460
	1.5	3	1.8	575