

# Submittal Data Sheet

## Wilco IPL - Inline Centrifugal Circulators

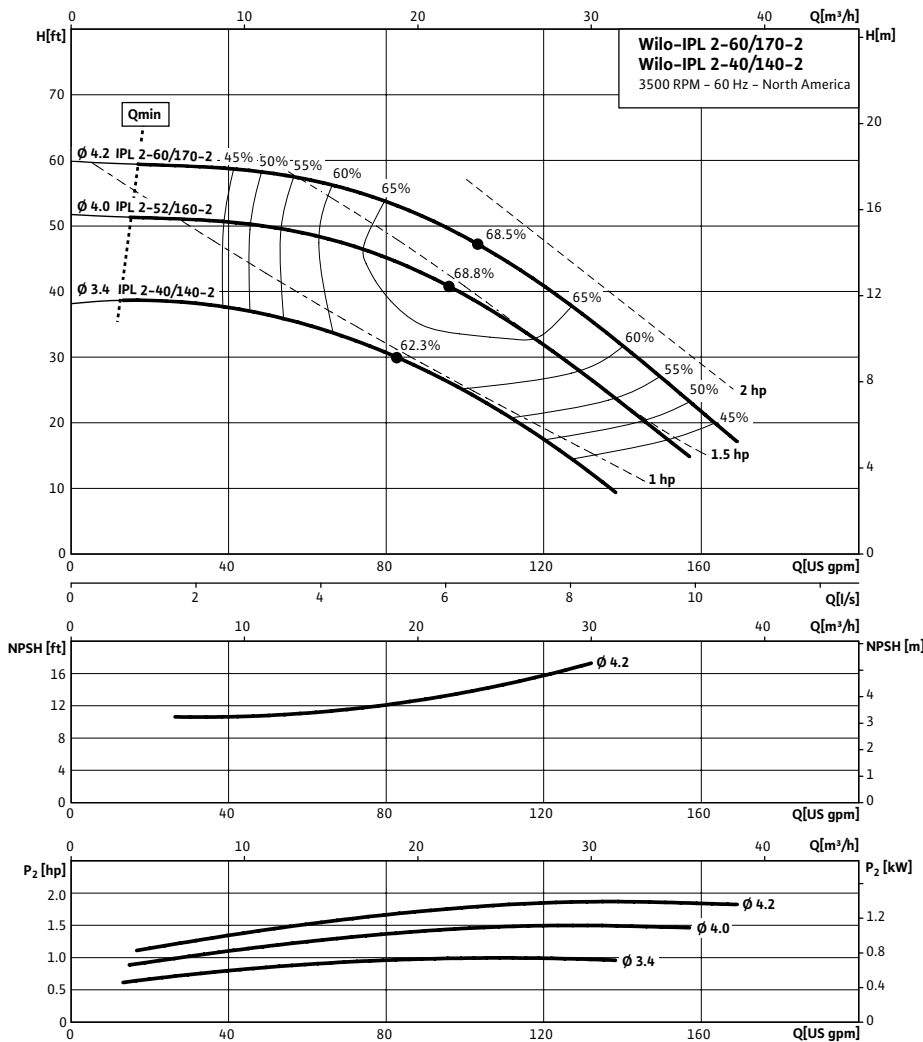


### Wilco IPL 2 3500 RPM



Project:	
Engineer:	
Contractor:	
Submitted By:	Date:
Approved By:	Date:

Tag #	Model #	Flow	Head	HP	Cycle	Phase	Voltage	RPM
	IPL 2-60/170-2				60Hz			3,500 (2 Pole)



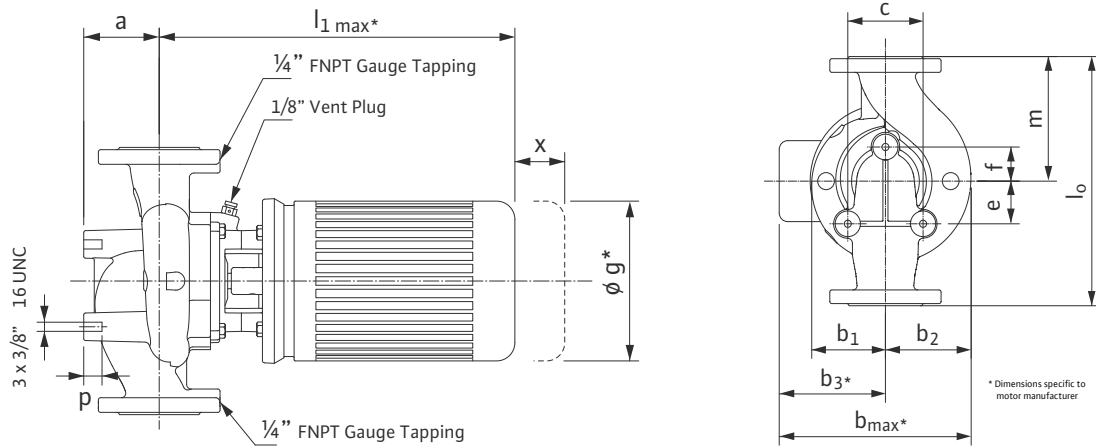
Technical Data	
Temp Range:	15 °F to + 250 °F (-10 °C to +120 °C)
Power Supply	1~115 / 208-230 V, 60 Hz 3~208-230 / 460 V, 60 Hz 3~575 V, 60 Hz
Motor Options	TEFC, (ODP Opt), EPACT Rated
Flange Connection	2" with ¼" pressure gauge tappings
Max operating pressure:	145 PSI (10 Bar)

Materials of Construction	
Pump volute	Cast Iron
Impeller	Engineered composite
Shaft	316L stainless steel stub shaft
Mechanical seal	Q1Q1X4GG (silicium carbide seal faces, HNBR elastomers)

Applications	
• Hot water heating systems	• Industrial circulation systems
• Air conditioning systems	• Solar Systems
• Closed cooling circuits	• Geothermal Systems

Approval Stamp

**Dimensions & Weights**

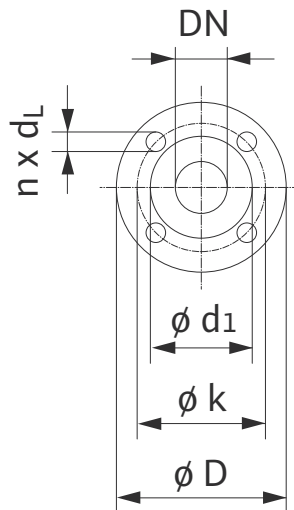


**Dimensions and Weights**

Dimensions-inches (mm)																Weight
Model	Dia.	a	$l_1$	$b_1$	$b_2$	$b_3$	$b_{\text{max}}$	c	e	f	g	$l_0$	m	p	x	
IPL 2-40/140-2	2	3/4	17 <sup>7</sup> / <sub>8</sub>	3 <sup>1</sup> / <sub>2</sub>	4 <sup>1</sup> / <sub>16</sub>	5 <sup>1</sup> / <sub>4</sub>	8 <sup>3</sup> / <sub>4</sub>	3 <sup>9</sup> / <sub>16</sub>	1 <sup>9</sup> / <sub>16</sub>	1 <sup>15</sup> / <sub>16</sub>	7	11 <sup>1</sup> / <sub>2</sub>	5 <sup>3</sup> / <sub>4</sub>	1 <sup>3</sup> / <sub>16</sub>	5 <sup>7</sup> / <sub>8</sub>	65.7 lbs
	(50)	(83)	(454)	(88)	(103)	(133)	(222)	(90)	(40)	(50)	(178)	(292)	(146)	(20)	(56)	29.8 kg
IPL 2-52/160-2	2	3/4	17 <sup>7</sup> / <sub>8</sub>	3 <sup>1</sup> / <sub>2</sub>	4 <sup>1</sup> / <sub>16</sub>	5 <sup>1</sup> / <sub>4</sub>	8 <sup>3</sup> / <sub>4</sub>	3 <sup>9</sup> / <sub>16</sub>	1 <sup>9</sup> / <sub>16</sub>	1 <sup>15</sup> / <sub>16</sub>	7	11 <sup>1</sup> / <sub>2</sub>	5 <sup>3</sup> / <sub>4</sub>	1 <sup>3</sup> / <sub>16</sub>	5 <sup>7</sup> / <sub>8</sub>	66.1 lbs
	(50)	(83)	(454)	(88)	(103)	(133)	(222)	(90)	(40)	(50)	(178)	(292)	(146)	(20)	(56)	30 kg
IPL 2-60/170-2	2	3/4	17 <sup>7</sup> / <sub>8</sub>	3 <sup>1</sup> / <sub>2</sub>	4 <sup>1</sup> / <sub>16</sub>	5 <sup>1</sup> / <sub>4</sub>	8 <sup>3</sup> / <sub>4</sub>	3 <sup>9</sup> / <sub>16</sub>	1 <sup>9</sup> / <sub>16</sub>	1 <sup>15</sup> / <sub>16</sub>	7	11 <sup>1</sup> / <sub>2</sub>	5 <sup>3</sup> / <sub>4</sub>	1 <sup>3</sup> / <sub>16</sub>	5 <sup>7</sup> / <sub>8</sub>	77.2 lbs
	(50)	(83)	(454)	(88)	(103)	(133)	(222)	(90)	(40)	(50)	(178)	(292)	(146)	(20)	(56)	35 kg

**Flange Dimensions**

Dimensions - Inches (mm)				
DN	$\phi D$	$\phi d_1$	$\phi k$	$n \times d_L$
2	5 <sup>1</sup> / <sub>4</sub>	3 <sup>7</sup> / <sub>16</sub>	3 <sup>1</sup> / <sub>2</sub>	4 x <sup>9</sup> / <sub>16</sub>
	(133)	(87)	(102)	(4 x 14)



**TEFC Motor Data**

Model	P2	Phase	FLA	Voltage
	[HP]	[-]	[A]	[V]
IPL 2-40/140-2	1	1	15 / 7.9 - 7.5	115 / 208-230
	1	3	3.7 - 3.6 / 1.8	208-230 / 460
	1	3	1.2	575
IPL 2-52/160-2	1.5	1	16 / 8	115 / 208-230
	1.5	3	4.9 - 4.6 / 2.3	208-230 / 460
	1.5	3	1.8	575
IPL 2-60/170-2	2	1	24 / 12.6 - 12	115 / 208-230
	2	3	6.2 - 5.8 / 2.9	208-230 / 460
	2	3	2.3	575