

Submittal Data Sheet

Wilco Stratos Z - High Efficiency Domestic Hot Water Circulator

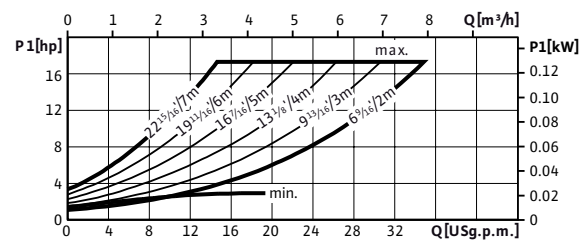
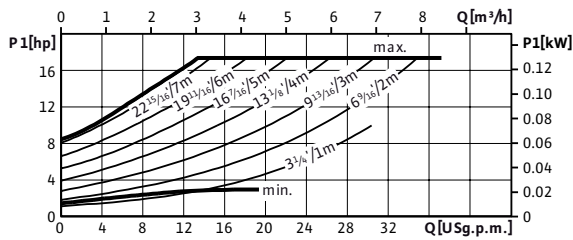
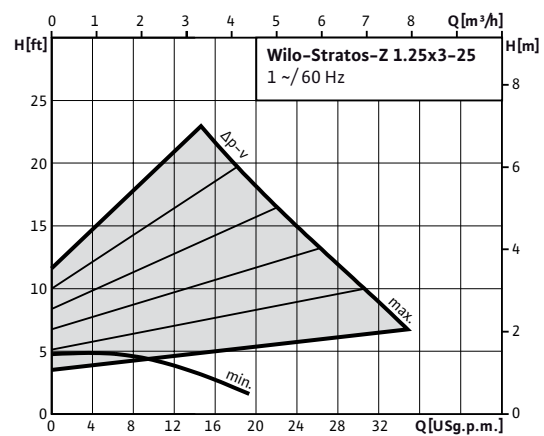


Stratos Z 1.25x3-25



Project:	
Engineer:	
Contractor:	
Submitted By:	Date:
Approved By:	Date:

Tag #	Model #	Flow	Head	Control Mode	Cycle	Phase	Voltage
	Stratos Z 1.25x3-25				60Hz	1	230



Technical Data

Liquid Temp Range	14°F to 230°F (-10°C to 110°C)
Max Temperature	104°F (40°C)
Min. Suction Pressure (122°F)	4.3 PSI
Min. Suction Pressure (203°F)	14.2 PSI
Min. Suction Pressure (230°F)	22.8 PSI

Materials of Construction

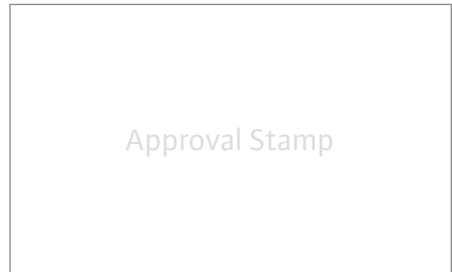
Pump Volute	Stainless steel (AISI CF-8M)
Impeller	Composite (PPS-40% GF)
Shaft	Stainless Steel (X39CrMo17-1)
Bearing	Carbon, synthetic resin impregnated

IR Module Selection

Module 1	Module
	BACnet / Dual Pump
	LONworks / Dual Pump
	SBM Run Signal / Ext. Off / Dual Pump
	SBM Run Signal / 0-10v / Dual Pump
	Ext. Min / 0-10v / Dual Pump
	Ext. Off / 0-10v / Dual Pump
	None

Applications

• Heating Systems	• Cooling Circuits
• Air Conditioning	• Industrial Circulation
• Solar Systems	• Geothermal Systems

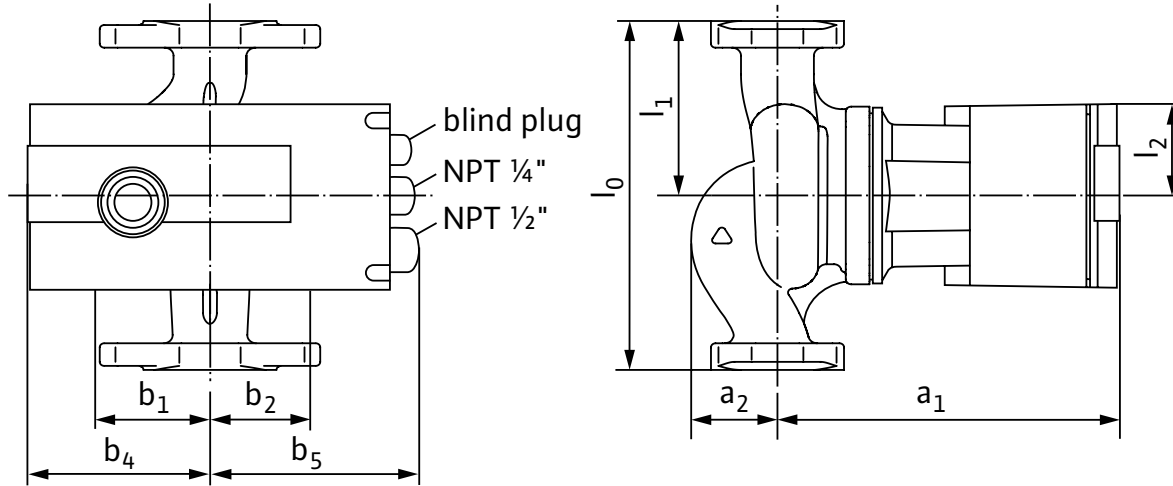


Submittal Data Sheet

Wilo Stratos Z - High Efficiency Domestic Hot Water Circulator



Dimensions & Weights

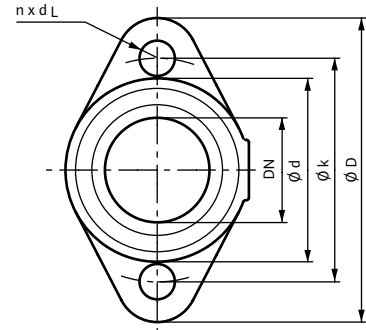


Dimensions and Weights

Model	Dimensions - Inches (mm)									Weight - lbs (kg)
	l_0	l_1	l_2	a_1	a_2	b_1	b_2	b_4	b_5	
Stratos Z 1.25x3-25	6½	¾	1 ^{15/16}	7 ^{3/16}	1¾	2 ^{1/8}	1 ^{7/8}	3½	5 ^{9/16}	9.92
	(165)	(82.5)	(49)	(182)	(45)	(54)	(48)	(89)	(142)	(4.5)

Flange Dimensions

Dimensions - Inches (mm)				
Dia.	ϕD	ϕd	ϕk	$n \times d_L$
1¼"	4¾	2 ^{7/8}	3½	2 x ^{9/16}
	(121)	(73)	(89)	(2 x 14)



ECM Motor Data

Model	hp	Speed	Watts	FLA	FLA
		RPM	W	1~230V	3~230V
Stratos Z 1.25x3-25	0.134	1400 - 3700	9-130	0.13-1.20	0.13-1.20

